

01773 521414

www.johnsonplant.co.uk/hire

G.H. JOHNSON CRANE HIRE LTD.

HYDRAULIC CRAWLER CRANE

CKE800

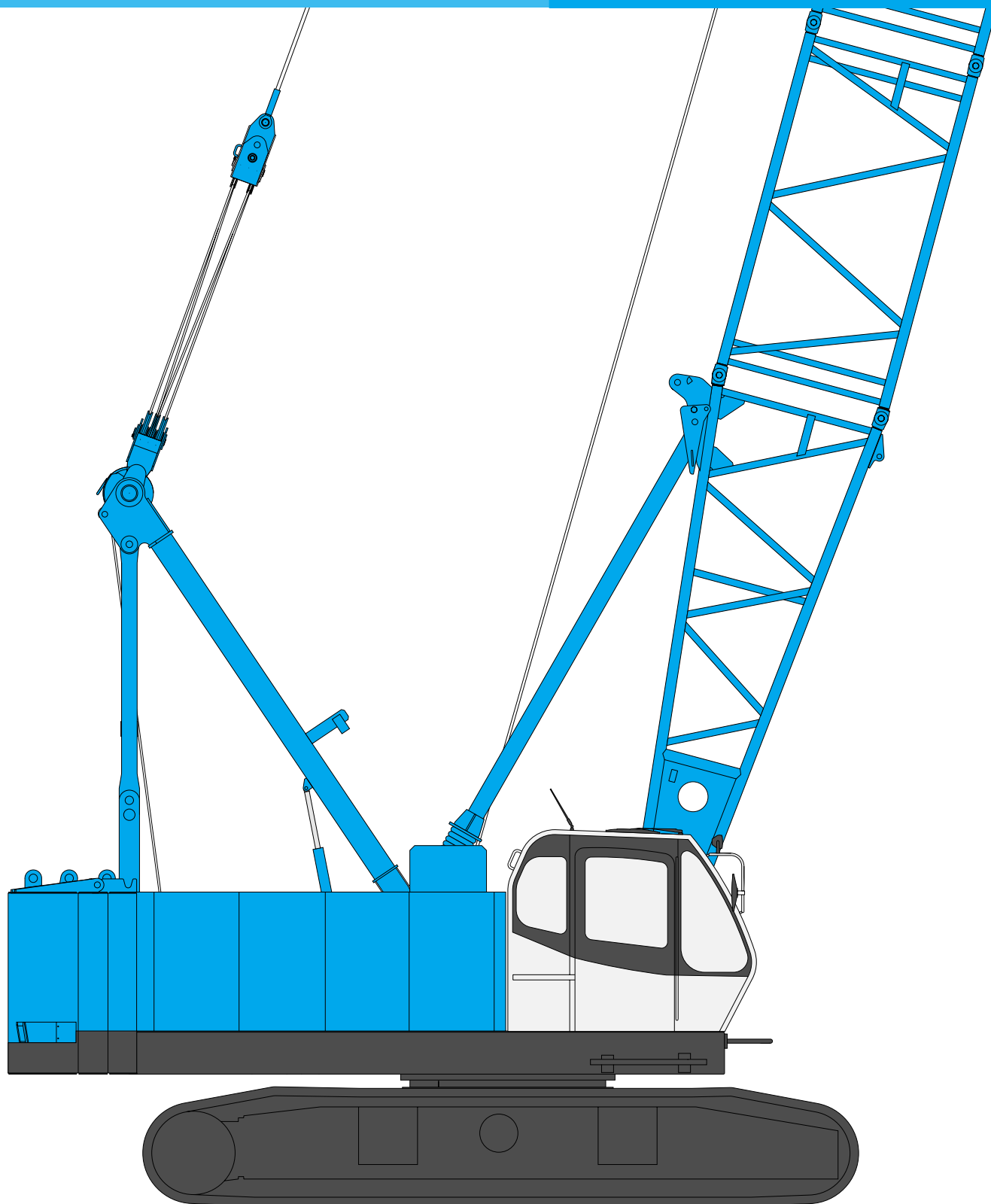
KOBELCO

Model: CKE800-1F

G.H. JOHNSON CRANE HIRE LTD.

www.johnsonplant.co.uk/hire

01773 521414

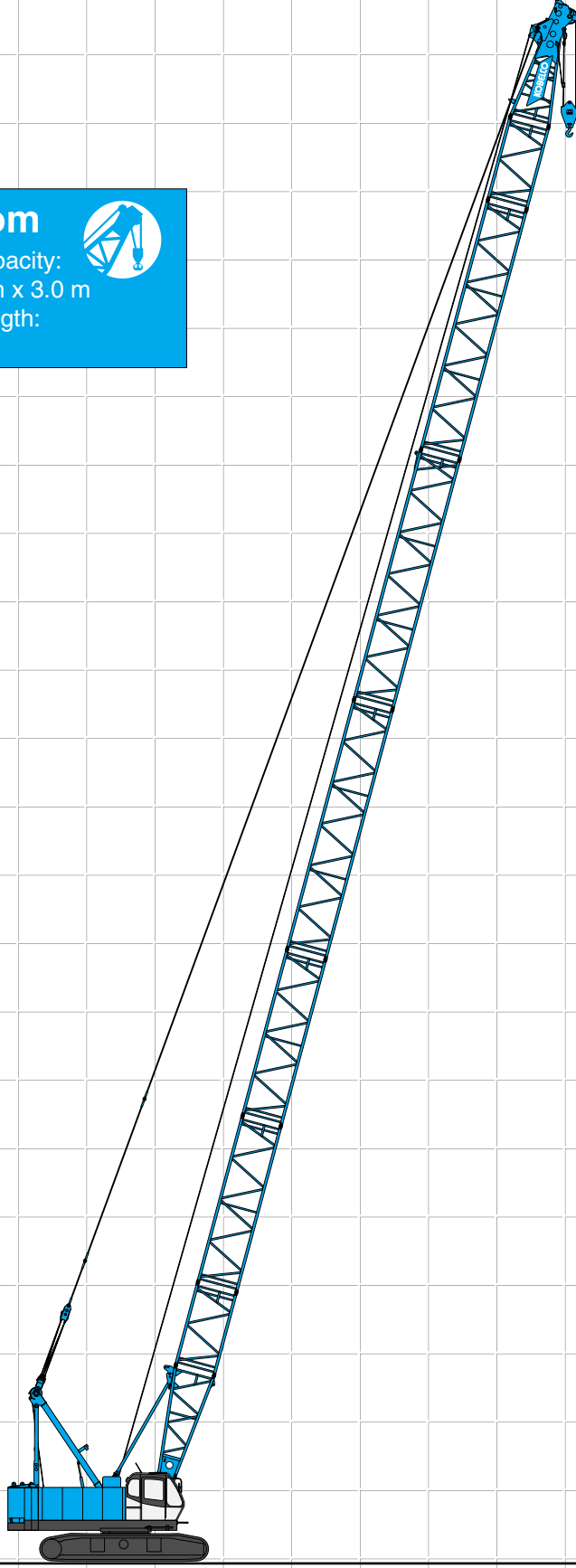



Max. Lifting Capacity: 80 t x 3.0 m
Max. Crane Boom Length: 54.9 m
Max. Fixed Jib Combination: 42.7 + 18.3 m
45.7 + 12.2 m

CONFIGURATION

Crane Boom


Max. Lifting Capacity:
80 metric ton x 3.0 m
Max. Boom Length:
54.9 m



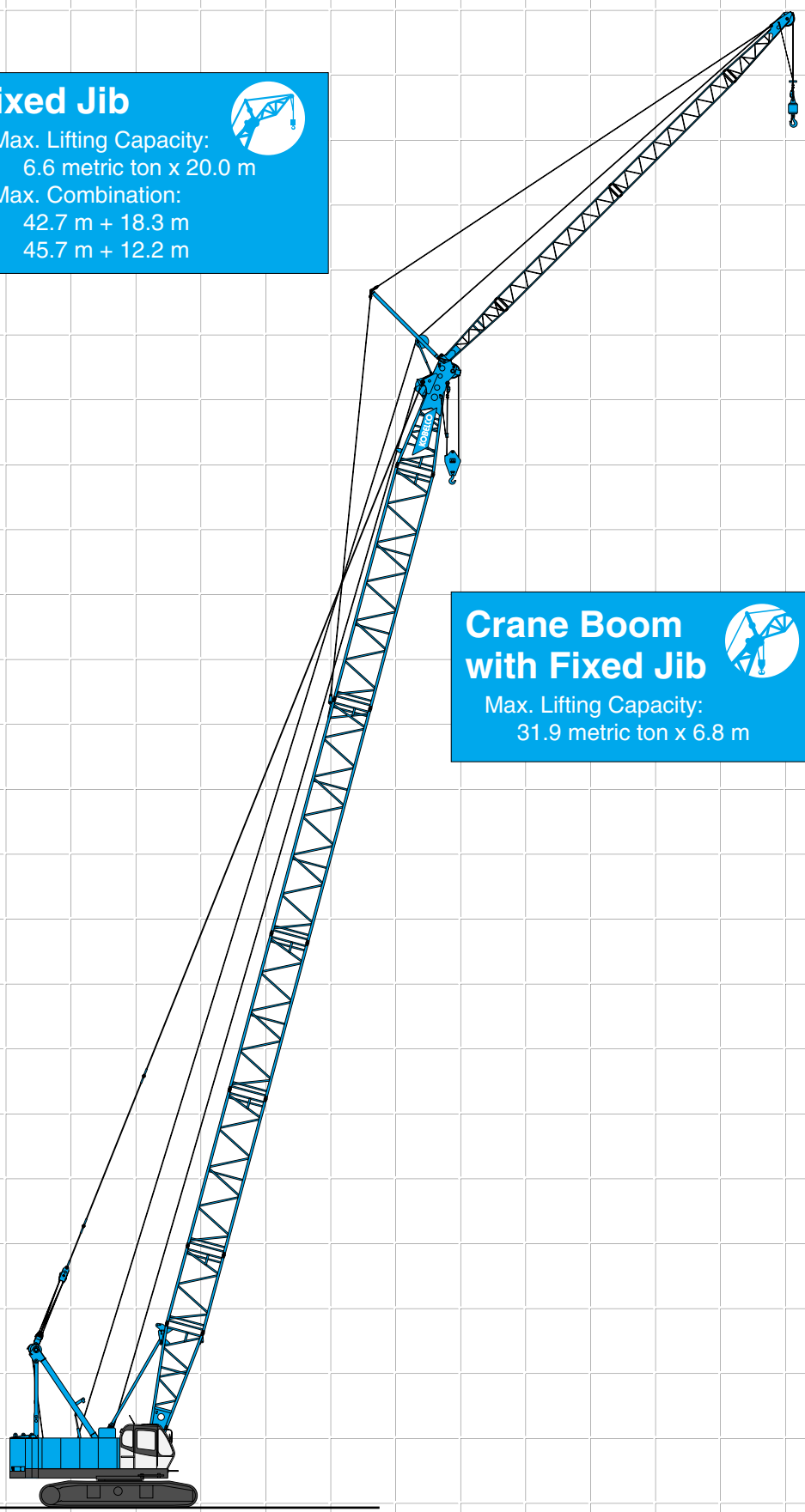
Fixed Jib 

Max. Lifting Capacity:
6.6 metric ton x 20.0 m

Max. Combination:
42.7 m + 18.3 m
45.7 m + 12.2 m

Crane Boom with Fixed Jib 

Max. Lifting Capacity:
31.9 metric ton x 6.8 m



CONTENTS

- Configuration 1
- Specifications 3
- General Dimensions 5
- Boom and Jib Arrangements
 - Crane Boom Arrangements 6
 - Fixed Jib Arrangements 6
- Working Ranges and Lifting Capacities
 - Crane Boom Working Ranges 8
 - Crane Boom Lifting Capacity 9
 - Auxiliary Sheave Lifting Capacity for Crane Boom 9
 - Fixed Jib Working Ranges 10
 - Fixed Jib Lifting Capacities 11
 - Crane Boom Lifting Capacity with Fixed Jib 13
- Parts and Attachments ... 14

SPECIFICATIONS

01773 521414

www.johnsonplant.co.uk/hire

G.H. JOHNSON CRANE HIRE LTD.

G.H. JOHNSON CRANE HIRE LTD.

www.johnsonplant.co.uk/hire

01773 521414



Power Plant

Model: Hino diesel engine J08E-TM
Type: Water-cooled, direct fuel injection, with turbocharger
Complies with NRMM (Europe) Stage IIIA and US EPA TierIII.
Displacement: 7.684 liters
Rated Power: 159 kW at 2,000 min⁻¹ {rpm} (ISO)
Max. torque: 797 N·m/1,600 min⁻¹
Cooling system: Liquid, recirculating bypass
Starter: 24 V/5.0 kW
Radiator: Corrugated type core, thermostatically controlled
Air cleaner: Dry type with replaceable paper element
Throttle: Electric throttle control, twist grip type
Fuel filter: Replacement paper element
Batteries: Two 12V, 150 Ah/20 HR capacity batteries, series connected.
Fuel tank capacity: 400 liters



Hydraulic System

Three variable displacement piston pumps are driven by heavy-duty pump drive. Two of variable displacement pumps are used in the main hook hoist circuit, boom hoist circuit, auxiliary hook hoist circuit, third hoist circuit and each propel circuit. The other is used in the swing circuit.
Control: Full-flow hydraulic control system for infinitely variable pressure to front and rear drums, boom hoist brakes and clutches. Controls respond instantly to the touch, delivering smooth function operation.
Cooling: Oil-to-air heat exchanger (plate-fin type)
Filtration: Full-flow and bypass type with replaceable element
Electrical system: All wiring corded for easy servicing, individual fused branch circuits.

Max. relief valve pressure:

Load hoist, boom hoist and propel system:

31.9 MPa {325 kgf/cm²}

Swing system: 27.5 MPa {280 kgf/cm²}

Control system: 7.0 MPa {71 kgf/cm²}

Reservoir capacity: 440 liters



Boom Hoisting System

Powered by a hydraulic motor through a planetary reducer.
Brake: A spring-set, hydraulically released multiple-disc brake is mounted on the boom hoist motor and operated through a counter-balance valve.
Drum lock: External ratchet for locking drum.
Drum: Single drum, grooved for 16 mm dia. wire rope.
Line speed: Single line on first drum layer
Hoisting/Lowering: 70 to 2 m/min

Diameter of wire ropes

Boom guy line: 30 mm

Boom hoist reeving: 12 parts of 16 mm dia. high strength wire rope

Boom backstops: Required for all boom lengths



Load Hoist System

Front and rear drums for load hoist powered by a hydraulic variable plunger motors, driven through planetary reducers.
Negative Brake: A spring-set, hydraulically released multiple-disc brake is mounted on the hoist motor and operated through a counter-balance valve. (Positive free fall brake is optional item.)

Drum lock: External ratchet for locking drum.

Drums:

Front drum:

550 mm P.C.D. x 545 mm wide drum, grooved for 22 mm wire rope. Rope capacity is 270 m working length and 335 m storage length.

Rear drum:

550 mm P.C.D. x 545 mm wide drum, grooved for 22 mm wire rope. Rope capacity is 130 m working length and 335 m storage length.

Note: Rope lengths listed above denote drum capacity and may differ from actual rope lengths supplied when machinery is shipped.

Line speed: Single line on the first drum layer

Hoisting/Lowering: 120 to 3 m/min

Line Pull (Single-line):

Rated line pull: 78 kN {8.0 tf}



Swing System

Swing unit is powered by hydraulic motor driving spur gears through planetary reducer, the swing system provides 360° rotation.

Swing parking brakes: A spring-set, hydraulically released multiple-disc brake is mounted on swing motor.

Swing circle: Single-row ball bearing with an integral internally cut swing gear.

Swing lock: Manually, two position lock for transportation

Swing speed: 4.0 min⁻¹ {rpm}



Upper Structure

Torsion-free precision machined upper frame. All components are located clearly and service friendly. Engine with low noise level. Complies with EC Directive 2000/14/EC.

Counterweight: 25.7 ton



Cab & Control

Totally enclosed, full vision cab with safety glass, fully adjustable, high backed seat with a head-rest and armrests, and intermittent wiper and window washer (skylight and front window).

Cab fittings:

Air conditioner, convenient compartment (for tool), cup holder, ashtray, cigarette lighter, sun visor, roof blind, tinted glass, floor mat, foot-rest, shoe tray

Controls:

Four adjustable levers for front drum, rear drum, boom drum and swing controls, and boom hoist pedal.



Lower Structure

Steel-welded carbody with axles. Crawler assemblies can be hydraulically extended for wide-track operation or retracted for transportation. Crawler belt tension is maintained by hydraulic jack force on the track-adjusting bearing block.

Carbody weight: 6.7 t

Crawler drive: Independent hydraulic propel drive is built into each crawler side frame. Each drive consists of a hydraulic motor propelling a driving tumbler through a planetary gear box. Hydraulic motor and gear box are built into the crawler side frame within the shoe width.

Crawler brakes: Spring-set, hydraulically released parking brakes are built into each propel drive.

Steering mechanism: A hydraulic propel system provides both skid steering (driving one track only) and counter-rotating steering (driving each track in opposite directions).

Track rollers: Sealed track rollers for maintenance-free operation.

Shoes (flat): 63 shoes, 800 mm wide each crawler

Max. travel speed: 1.9/1.2 km/h

Max. gradeability: 40%



Weight

Including upper and lower machine, 25.7 ton counterweight, 6.7 ton carbodyweight, basic boom (or basic jib), hook, and other accessories.

Specification

Weight

Ground pressure

Crane boom	Approx. 73.8 ton,	88.0 kPa {0.9 kgf/cm ² }
Fixed Jib	Approx. 76.1 ton,	91.0 kPa {0.93 kgf/cm ² }



Attachment

Boom and Jib:

Welded lattice construction using tubular, high-tensile steel chords with pin connections between sections.

Boom Length

	Crane Boom
Basic Boom	9.1 m
Max. Boom	54.9 m

Jib Length

	Fixed Jib
Basic Jib	6.1 m
Max. Jib	18.3 m

Max. Combination (Boom + Jib)

Crane Boom	54.9 m (boom only)
Fixed Jib	42.7 m + 18.3 m, 45.7 m + 12.2 m

Main Specifications (Model: CKE800-1F)

Crane Boom	
Max. Lifting Capacity	80 t/3.0 m
Max. Length	54.9 m
Fixed Jib	
Max. Lifting Capacity	6.6 t
Max. Combination	42.7 m + 18.3 m, 45.7 m + 12.2 m
Main & Aux. Winch	
Max. Line Speed	120 m/min (1st layer)
Rated Line Pull (Single line)	78 kN {8 tf}
Wire Rope Diameter	22 mm
Wire Rope Length	270 m (Main) 130 m (Aux.)
Brake Type	Spring set hydraulically released (Negative)
Free-Fall Brake Type	Wet-type multiple disc brake (Optional)
Working Speed	
Swing Speed	4.0 min ⁻¹ {rpm}
Travel Speed	1.9/1.2 km/h
Power Plant	
Model	Hino J08E-TM
Engine Output (Gross)	159 kW/2,000 min ⁻¹ {rpm}
Fuel Tank Capacity	400 liters

Hydraulic System	
Main Pumps	3 variable displacement
Max. Pressure	31.9 MPa {325 kgf/cm ² }
Hydraulic Tank Capacity	440 liters
Self-Removal Device	
Standard counterweight removal	
Weight	
Operating Weight*	Approx. 73.8 t
Ground Pressure*	88 kPa {0.9 kgf/cm ² }
Counterweight	25.7 t (upper), 6.7t (lower)
Transport Weight**	Approx. 40.8 t

Units are SI units. { } indicates conventional units.

Line speeds in table are for light loads. Line speed varies with load.

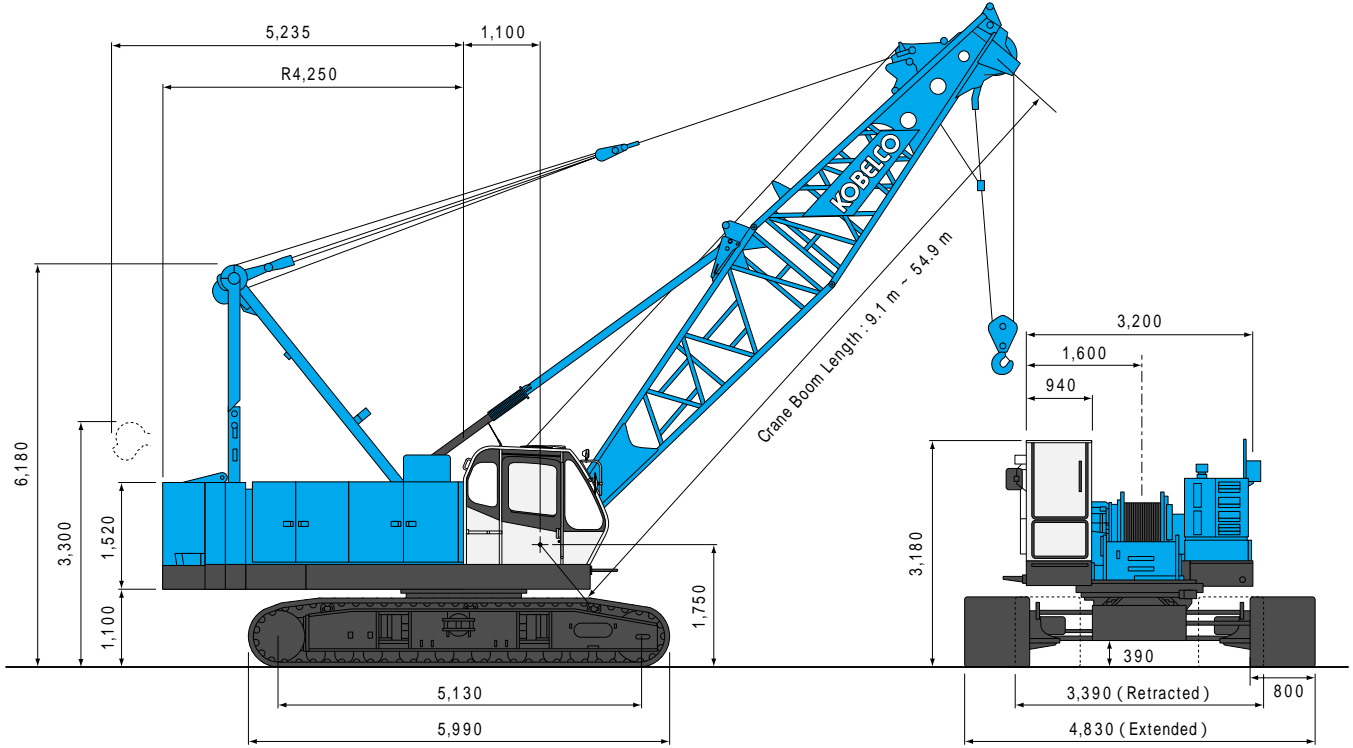
* Including upper and lower machine, 25.7 ton counterweight, 6.7t carbodyweight basic boom, hook, and other accessories.

** Base machine with main and aux. winch with wire rope (Refer to P14)

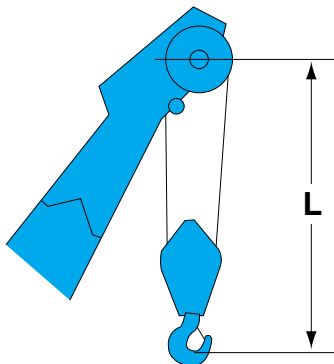
GENERAL DIMENSIONS

Crane Boom

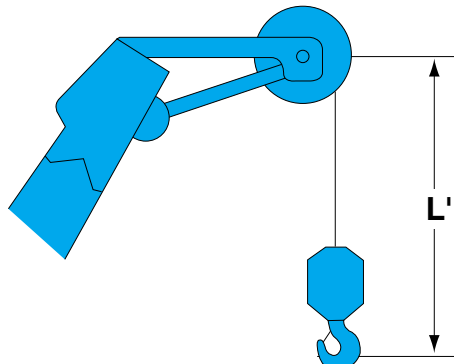
(Unit: mm)



Limit of Hook Lifting



Hook	L
80 t hook	4.5 m
55 t hook	4.3 m
32 t hook	4.2 m
19 t hook	4.1 m



BOOM AND JIB ARRANGEMENTS

01773 521414

www.johnsonplant.co.uk/hire

G.H. JOHNSON CRANE HIRE LTD.

G.H. JOHNSON CRANE HIRE LTD.

www.johnsonplant.co.uk/hire

01773 521414

Crane Boom Arrangements

Boom length m (ft)	Boom arrangement
9.1 (30)	
12.2 (40)	
15.2 (50)	
18.3 (60)	
21.3 (70)	
24.4 (80)	
27.4 (90)	
30.5 (100)	
33.5 (110)	

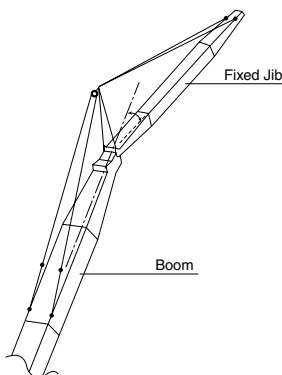
Boom length m (ft)	Boom arrangement
36.6 (120)	
39.6 (130)	
42.7 (140)	
45.7 (150)	
48.8 (160)	
51.8 (170)	
54.9 (180)	

Symbol	Boom Length	Remarks
	5.2 m	Boom Base
	3.9 m	Boom Top
	3.0 m	Insert Boom
	6.1 m	Insert Boom
	6.1 m	Insert Boom with lug
	9.1 m	Insert Boom
	9.1 m	Insert Boom with lug

↗ mark shows the guy line installing position when the fixed jib is used.

※ mark shows the standard boom arrangement which enables each boom length of less than that boom length to be configured.

Fixed Jib Arrangements



Crane boom length	Jib length m (ft)	Jib arrangement
30.5 m	6.1(20)	
}	12.2 (40)	
	18.3 (60)	

Symbol	Jib Length	Remarks
	3.0 m	Jib Base
	3.0 m	Jib Top
	6.1 m	Insert Jib



Hook Blocks

A range of hook blocks can be specified, each with a safety latch.

Hooks	Weight (kg)	No. of sheaves	No. of lines and max. rated loads (tons)				
			1	2	3	4	5
80-ton	800	5	-	-	-	-	40.0
55-ton	650	4	-	-	24.0	32.0	40.0
32-ton	500	2	-	16.0	24.0	32.0	-
19-ton	400	1	-	16.0	19.0	-	-
6.6-ton ball hook	160	0	6.6	-	-	-	-

Hooks	Weight (kg)	No. of sheaves	No. of lines and max. rated loads (tons)				
			6	7	8	9	10
80-ton	800	5	48.0	56.0	64.0	72.0	80.0
55-ton	650	4	48.0	55.0	-	-	-
32-ton	500	2	-	-	-	-	-
19-ton	400	1	-	-	-	-	-
6.6-ton ball hook	160	0	-	-	-	-	-

Symbols for Attachments:



Crane Boom



Auxiliary Sheave for Crane Boom



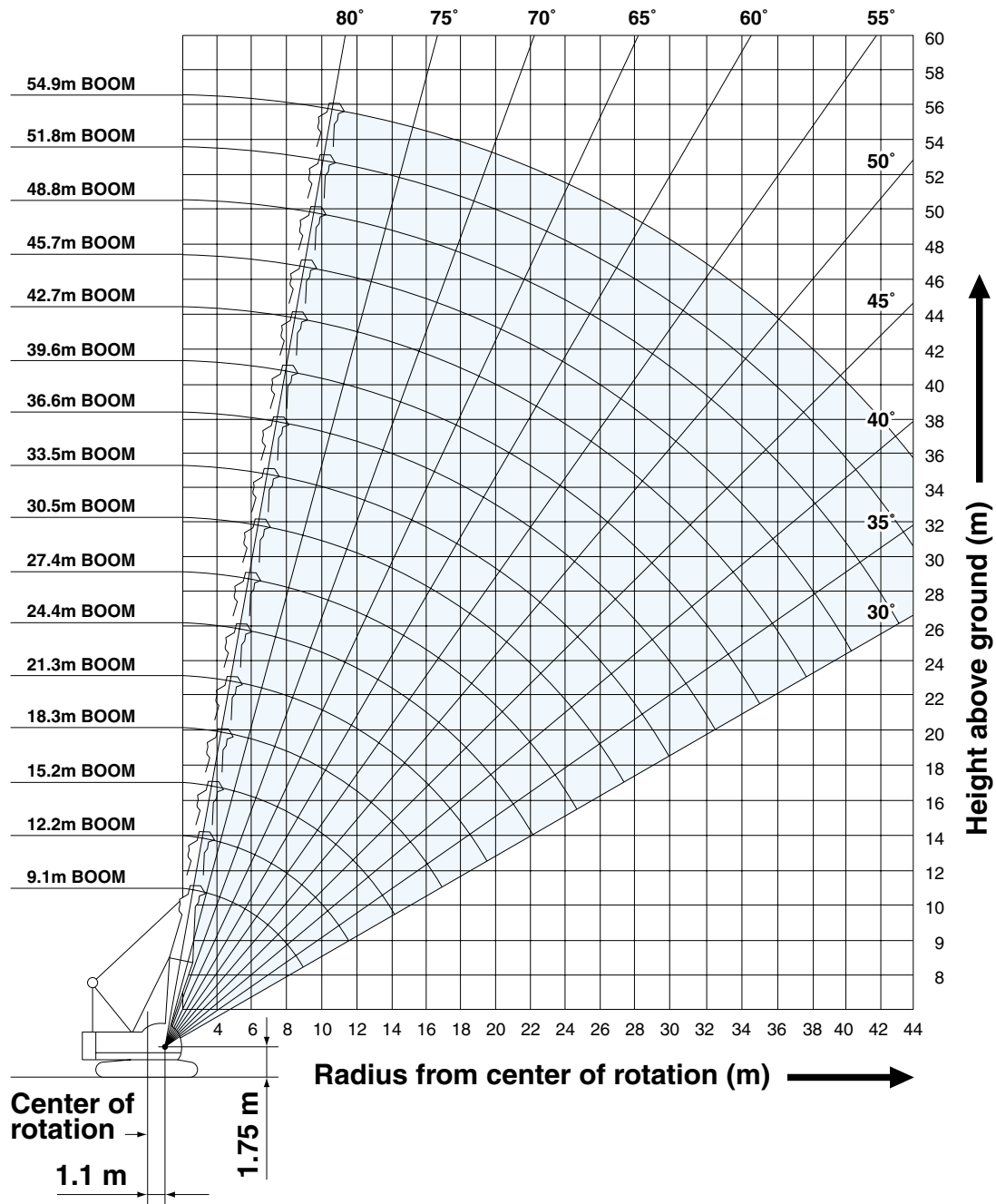
Fixed Jib



Crane Boom with Fixed Jib

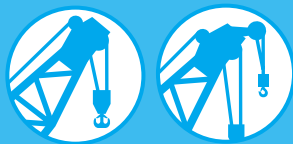
WORKING RANGES AND LIFTING CAPACITIES

Crane Boom Working Ranges



NOTES:

1. Ratings according to EN13000.
2. Ratings in metric tons for 360° working area.
3. Operating radius is the horizontal distance from center of rotation to a vertical line through the center of gravity of the load.
4. Weight of hook block (s), slings and other load handling accessories is included in rated load. Their total weight must be subtracted from rated load to obtain weight that can be lifted.
5. Ratings shown are based on freely suspended loads and make no allowance for such factors as wind effect on lifted load, ground conditions out-of-level, operating speeds or any other condition that could be detrimental to the safe operation of this equipment. Operator, therefore, has the responsibility to judge the existing conditions and reduce lifted loads and operating speeds accordingly.
6. Ratings are for operation on a firm and level surface, up to 1% gradient.
7. At radii and boom lengths where no ratings are shown on chart, operation is not intended nor approved.
8. Boom inserts and guy lines must be arranged as shown in the "Operator's Manual".
9. Boom hoist reeving is 12 part line.
10. Gantry must be in raised position for all conditions.
11. Boom backstops are required for all boom lengths.
12. Crawler frames must be fully extended for all crane operations.
13. Ratings shown in are determined by the strength of the boom or other structural component.
14. Instruction in the "Operator's Manual" must be strictly observed when operating the machine.
15. Crane boom ratings: Deduct weight of main hook block, slings, and all other load handling accessories from crane boom ratings shown.
16. Auxiliary sheave ratings for crane boom: Deduct weight of ball hook, slings, and all other load handling accessories from auxiliary sheave ratings for crane boom shown.
17. Crane boom lengths for auxiliary sheave mounting are 9.1 m to 51.8 m.



Unit: metric ton

Crane Boom Lifting Capacity

Counterweight: 25.7 t, Carbody weight: 6.7 t

Working radius (m) \ Boom Length (m)	9.1	12.2	15.2	18.3	21.3	24.4	27.4	30.5	33.5	36.6	39.6	42.7	45.7	48.8	51.8	54.9	Working radius (m) \ Boom Length (m)
3.0	80.0	3.6m/76.2															3.0
4.0	69.0	72.6	4.2m/69.6	4.7m/59.3													4.0
5.0	57.9	57.7	57.5	55.1	5.2m/50.0	5.7m/42.9											5.0
6.0	47.5	47.3	46.7	44.6	42.6	40.8	6.3m/37.2	6.8m/33.0									6.0
7.0	39.8	39.6	38.9	37.3	35.8	34.5	33.3	32.0	7.3m/29.5	7.9m/26.4							7.0
8.0	32.9	32.7	32.5	32.0	30.9	29.8	28.8	27.8	26.9	26.0	8.4m/24.0						8.0
9.0	26.0	27.8	27.6	27.5	27.0	26.2	25.4	24.5	23.8	23.1	22.4	21.7	9.4m/20.1				9.0
10.0	9.2m/24.5	24.1	23.9	23.8	23.7	23.3	22.6	21.9	21.3	20.6	20.0	19.4	19.0	18.4	10.5m/17.1	11.0m/15.7	10.0
12.0		11.9m/19.3	18.8	18.7	18.6	18.5	18.4	17.9	17.4	16.9	16.5	16.0	15.6	15.1	14.8	14.4	12.0
14.0			15.4	15.3	15.1	15.0	14.9	14.8	14.7	14.2	13.9	13.5	13.2	12.8	12.5	12.1	14.0
16.0			14.5m/14.7	12.9	12.7	12.6	12.5	12.3	12.2	12.1	11.9	11.5	11.3	10.9	10.7	10.4	16.0
18.0				17.1m/11.8	10.9	10.8	10.7	10.5	10.4	10.3	10.2	10.0	9.8	9.4	9.3	9.0	18.0
20.0					19.8m/9.6	9.3	9.2	9.1	9.0	8.8	8.7	8.6	8.5	8.3	8.1	7.8	20.0
22.0						8.2	8.1	7.9	7.8	7.7	7.6	7.5	7.4	7.2	7.1	6.9	22.0
24.0						22.4m/8.0	7.2	7.0	6.9	6.8	6.6	6.5	6.4	6.3	6.2	6.1	24.0
26.0							25.1m/6.8	6.2	6.1	6.0	5.9	5.7	5.6	5.5	5.4	5.3	26.0
28.0								27.7m/5.7	5.5	5.4	5.2	5.1	5.0	4.9	4.8	4.7	28.0
30.0									4.9	4.8	4.7	4.5	4.4	4.3	4.2	4.1	30.0
32.0									30.3m/4.9	4.3	4.2	4.0	3.9	3.8	3.7	3.6	32.0
34.0										33.0m/4.1	3.8	3.6	3.5	3.4	3.3	3.2	34.0
36.0											35.0m/3.5	3.3	3.2	3.0	2.9	2.8	36.0
38.0												2.9	2.8	2.7	2.6	2.5	38.0
40.0												38.3m/2.9	2.6	2.4	2.3	2.2	40.0
42.0													40.9m/2.4	2.1	2.0	1.9	42.0
44.0														43.5m/2.0	1.8	1.7	44.0
46.0															1.6	1.5	46.0
48.0																1.3	48.0
50.0																48.7m/1.2	50.0
Reeves	10	10	9	8	7	6	5	5	4	4	3	3	3	3	3	2	Reeves

Note:
 Ratings according to EN13000.
 Ratings shown in are determined by the strength of the boom or other structural components.
 Refer to notes P8.

Auxiliary Sheave Lifting Capacity for Crane Boom (Without Main Hook)

Unit: metric ton

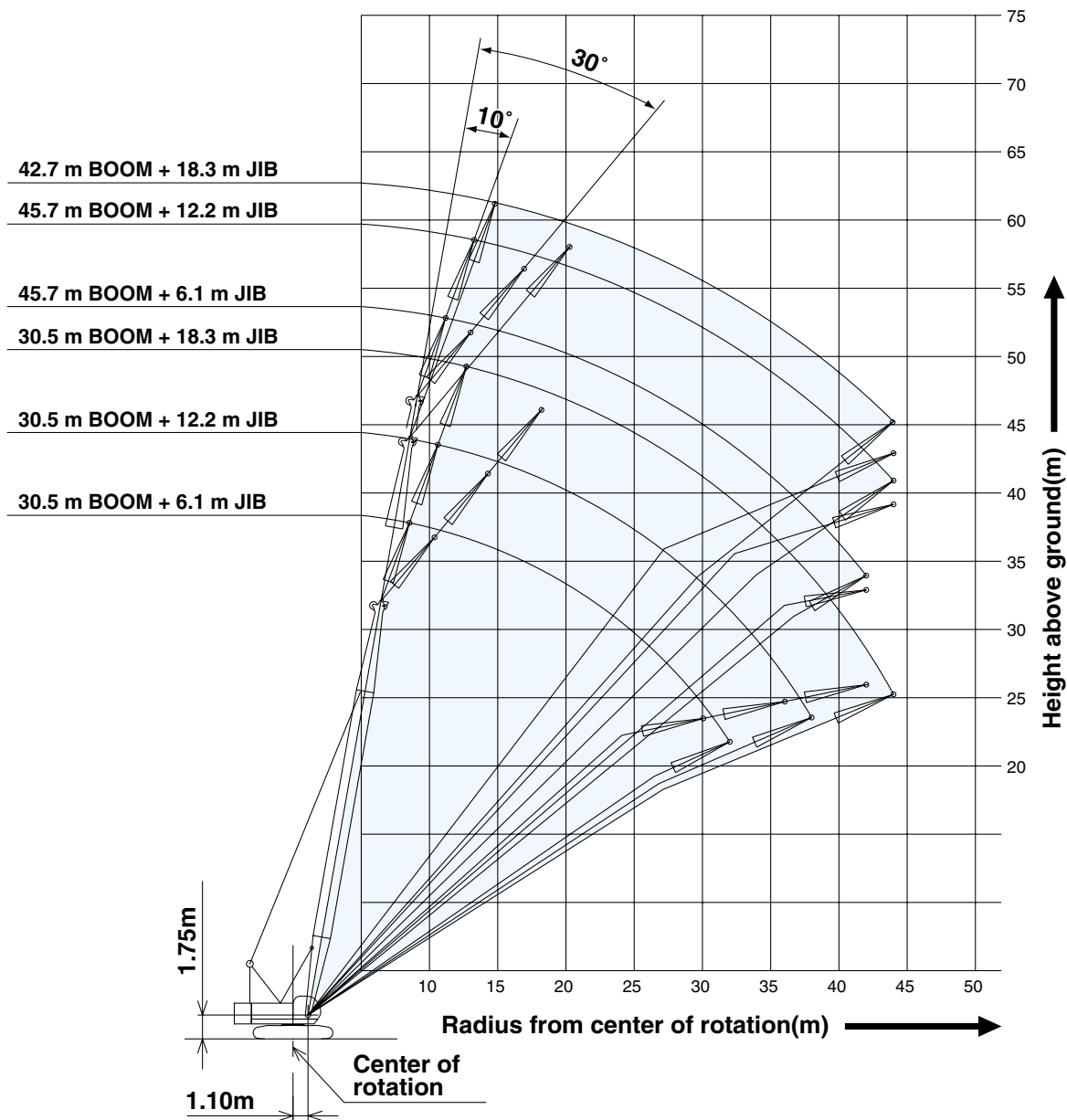
Counterweight: 25.7 t, Carbody weight: 6.7 t

Working radius (m) \ Boom Length (m)	9.1	12.2	15.2	18.3	21.3	24.4	27.4	30.5	33.5	36.6	39.6	42.7	45.7	48.8	51.8	Working radius (m) \ Boom Length (m)	
5.0	6.6	6.6	6.6	5.5m/6.6												5.0	
6.0	6.6	6.6	6.6	6.6	6.6											6.0	
7.0	6.6	6.6	6.6	6.6	6.6	6.6	6.6									7.0	
8.0	6.6	6.6	6.6	6.6	6.6	6.6	6.6	6.6	6.6							8.0	
9.0	6.6	6.6	6.6	6.6	6.6	6.6	6.6	6.6	6.6	6.6						9.0	
10.0	9.2m/6.6	6.6	6.6	6.6	6.6	6.6	6.6	6.6	6.6	6.6	6.6	6.6				10.0	
12.0		11.9m/6.6	6.6	6.6	6.6	6.6	6.6	6.6	6.6	6.6	6.6	6.6	6.6	6.6	6.6	12.0	
14.0			6.6	6.6	6.6	6.6	6.6	6.6	6.6	6.6	6.6	6.6	6.6	6.6	6.6	14.0	
16.0			14.5m/6.6	6.6	6.6	6.6	6.6	6.6	6.6	6.6	6.6	6.6	6.6	6.6	6.6	16.0	
18.0				17.1m/6.6	6.6	6.6	6.6	6.6	6.6	6.6	6.6	6.6	6.6	6.6	6.6	18.0	
20.0					19.8m/6.6	6.6	6.6	6.6	6.6	6.6	6.6	6.6	6.6	6.6	6.6	20.0	
22.0						6.6	6.6	6.6	6.6	6.6	6.6	6.6	6.6	6.6	6.6	22.0	
24.0						22.4m/6.6	6.6	6.6	6.6	6.6	6.5	6.3	6.2	6.1	6.0	5.9	24.0
26.0							25.1m/6.5	5.9	5.8	5.7	5.6	5.4	5.3	5.2	5.1	5.1	26.0
28.0								27.7m/5.4	5.2	5.1	4.9	4.8	4.7	4.6	4.5	4.5	28.0
30.0									4.6	4.5	4.4	4.2	4.1	4.0	3.9	3.9	30.0
32.0									30.3m/4.6	4.0	3.9	3.7	3.6	3.5	3.4	3.4	32.0
34.0										33.0m/3.8	3.5	3.3	3.2	3.1	3.0	3.0	34.0
36.0											35.0m/3.2	3.0	2.9	2.7	2.6	2.6	36.0
38.0												2.6	2.5	2.4	2.3	2.3	38.0
40.0												38.3m/2.6	2.3	2.1	2.0	2.0	40.0
42.0													40.9m/2.1	1.8	1.7	1.7	42.0
44.0														43.5m/1.7	1.5	1.5	44.0
46.0															1.3	1.3	46.0
Reeves	1	1	1	1	1	1	1	1	1	1	1	1	1	1	1	1	Reeves

Note:
 Ratings according to EN13000.
 Ratings shown in are determined by the strength of the boom or other structural components.
 Refer to notes P8.

Fixed Jib Working Ranges

Jib Offset Angle: 10°, 30°



NOTES:

- Ratings according to EN13000.
- Ratings in metric tons for 360° working area.
- Operating radius is the horizontal distance from center of rotation to a vertical line through the center of gravity of the load.
- Weight of hook block (s), slings and other load handling accessories is included in rated load. Their total weight must be subtracted from rated load to obtain weight that can be lifted.
- Ratings shown are based on freely suspended loads and make no allowance for such factors as wind effect on lifted load, ground conditions out-of-level, operating speeds or any other condition that could be detrimental to the safe operation of this equipment. Operator, therefore, has the responsibility to judge the existing conditions and reduce lifted loads and operating speeds accordingly.
- Ratings are for operation on a firm and level surface, up to 1% gradient.
- At radii and boom lengths where no ratings are shown on chart, operation is not intended nor approved.
- Boom/ jib inserts and guy lines must be arranged as shown in the "Operator's Manual".
- Boom hoist reeving is 12 part line.
- Gantry must be in raised position for all conditions.
- Boom backstops are required for all boom lengths.
- Crawler frames must be fully extended for all crane operations.
- Ratings shown in are determined by the strength of the boom or other structural component.
- Instruction in the "Operator's Manual" must be strictly observed when operating the machine.
- Fixed jib ratings: Deduct weight of jib hook block, slings, and all other load handling accessories from fixed jib ratings shown.
- Crane boom lengths for jib mounting are 30.5 m to 45.7 m.
- Crane boom ratings with fixed jib: Deduct weight of jib hook block, slings, and all other load handling accessories from crane boom ratings with fixed jib shown.



Fixed Jib Lifting Capacities (Without Main Hook)

Unit: metric ton

Jib Offset Angle: 10°

Counterweight: 25.7 t, Carbody weight: 6.7 t

Boom length (m)	30.5			33.5			36.6			39.6			Boom length (m)
Jib length (m)	6.1	12.2	18.3	6.1	12.2	18.3	6.1	12.2	18.3	6.1	12.2	18.3	Jib length (m)
9.0	6.6			6.6						6.6			9.0
10.0	6.6			6.6			6.6			6.6			10.0
12.0	6.6	6.6	4.5	6.6	6.6		6.6	6.6		6.6			12.0
14.0	6.6	6.6	4.5	6.6	6.6	4.5	6.6	6.6	4.5	6.6	6.6	4.5	14.0
16.0	6.6	6.6	4.5	6.6	6.6	4.5	6.6	6.6	4.5	6.6	6.6	4.5	16.0
18.0	6.6	6.6	4.5	6.6	6.6	4.5	6.6	6.6	4.5	6.6	6.6	4.5	18.0
20.0	6.6	6.6	4.5	6.6	6.6	4.5	6.6	6.6	4.5	6.6	6.6	4.5	20.0
22.0	6.1	6.4	4.5	6.0	6.2	4.5	5.9	6.2	4.5	5.8	6.0	4.5	22.0
24.0	5.4	5.6	4.5	5.2	5.5	4.5	5.1	5.4	4.5	5.0	5.3	4.5	24.0
26.0	4.7	5.0	4.5	4.6	4.8	4.5	4.5	4.8	4.5	4.4	4.6	4.5	26.0
28.0	4.2	4.4	4.5	4.1	4.3	4.4	4.0	4.2	4.3	3.9	4.1	4.2	28.0
30.0	3.8	4.0	4.1	3.6	3.8	3.9	3.5	3.7	3.9	3.4	3.6	3.7	30.0
32.0	3.4	3.6	3.7	3.2	3.4	3.5	3.1	3.3	3.5	3.0	3.2	3.3	32.0
34.0		3.2	3.3	2.9	3.1	3.2	2.8	3.0	3.1	2.6	2.9	3.0	34.0
36.0		2.9	3.0	2.6	2.8	2.9	2.5	2.7	2.8	2.3	2.5	2.7	36.0
38.0		2.6	2.8		2.5	2.6	2.2	2.4	2.5	2.0	2.2	2.4	38.0
40.0			2.5		2.3	2.4		2.1	2.3	1.7	1.9	2.1	40.0
42.0			2.3		2.0	2.1		1.9	2.0		1.7	1.8	42.0
44.0			2.1			1.9		1.6	1.8		1.4	1.6	44.0
Reeves	1	1	1	1	1	1	1	1	1	1	1	1	Reeves

Boom length (m)	42.7			45.7			Boom length (m)
Jib length (m)	6.1	12.2	18.3	6.1	12.2	Jib length (m)	
12.0	6.6			6.6		12.0	
14.0	6.6	6.6	4.5	6.6	6.6	14.0	
16.0	6.6	6.6	4.5	6.6	6.6	16.0	
18.0	6.6	6.6	4.5	6.6	6.6	18.0	
20.0	6.6	6.6	4.5	6.5	6.6	20.0	
22.0	5.7	6.0	4.5	5.6	5.8	22.0	
24.0	4.9	5.2	4.5	4.8	5.1	24.0	
26.0	4.3	4.5	4.5	4.2	4.4	26.0	
28.0	3.8	4.0	4.1	3.6	3.9	28.0	
30.0	3.3	3.5	3.6	3.2	3.4	30.0	
32.0	2.9	3.1	3.2	2.7	3.0	32.0	
34.0	2.5	2.8	2.9	2.3	2.6	34.0	
36.0	2.2	2.4	2.6	2.0	2.2	36.0	
38.0	1.8	2.1	2.2	1.6	1.9	38.0	
40.0	1.6	1.8	2.0	1.4	1.6	40.0	
42.0	1.3	1.6	1.7	1.1	1.4	42.0	
44.0	1.1	1.3	1.5		1.1	44.0	
Reeves	1	1	1	1	1	Reeves	

Note:
 Ratings according to EN13000.
 Ratings shown in are determined by the strength of the boom or other structural components.
 Refer to notes P10.

Unit: metric ton

Jib Offset Angle: 30°**Counterweight: 25.7 t, Carbody weight: 6.7 t**

Boom length (m)	30.5			33.5			36.6			39.6			Boom length (m)
Jib length (m)	6.1	12.2	18.3	6.1	12.2	18.3	6.1	12.2	18.3	6.1	12.2	18.3	Jib length (m)
12.0	6.6			6.6			6.6			6.6			12.0
14.0	6.6			6.6			6.6			6.6			14.0
16.0	6.6	5.0		6.6	5.0		6.6	5.0		6.6	5.0		16.0
18.0	6.6	5.0	3.2	6.6	5.0	3.2	6.6	5.0		6.6	5.0	3.2	18.0
20.0	6.6	5.0	3.2	6.6	5.0	3.2	6.6	5.0	3.2	6.6	5.0	3.2	20.0
22.0	6.2	5.0	3.2	6.1	5.0	3.2	6.1	5.0	3.2	5.9	5.0	3.2	22.0
24.0	5.5	5.0	3.2	5.4	5.0	3.2	5.3	5.0	3.2	5.2	5.0	3.2	24.0
26.0	4.8	4.9	3.2	4.7	5.0	3.2	4.6	5.0	3.2	4.5	4.9	3.2	26.0
28.0	4.3	4.6	3.2	4.2	4.5	3.2	4.1	4.4	3.2	4.0	4.3	3.2	28.0
30.0	3.8	4.1	3.1	3.7	4.0	3.2	3.6	3.9	3.2	3.5	3.8	3.2	30.0
32.0		3.7	3.0	3.3	3.6	3.0	3.2	3.5	3.1	3.1	3.4	3.2	32.0
34.0		3.3	2.8		3.2	2.9	2.9	3.1	3.0	2.7	3.0	3.1	34.0
36.0		3.0	2.7		2.9	2.8		2.8	2.9	2.3	2.7	2.9	36.0
38.0			2.6		2.6	2.7		2.5	2.7	2.0	2.4	2.6	38.0
40.0			2.5			2.5		2.2	2.5		2.1	2.3	40.0
42.0			2.4			2.3			2.2		1.8	2.1	42.0
44.0						2.1			2.0		1.5	1.8	44.0
Reeves	1	1	1	1	1	1	1	1	1	1	1	1	Reeves

Boom length (m)	42.7			45.7			Boom length (m)
Jib length (m)	6.1	12.2	18.3	6.1	12.2	Jib length (m)	
14.0	6.6			6.6		14.0	
16.0	6.6			6.6		16.0	
18.0	6.6	5.0		6.6	5.0	18.0	
20.0	6.6	5.0	3.2	6.6	5.0	20.0	
22.0	5.9	5.0	3.2	5.8	5.0	22.0	
24.0	5.1	5.0	3.2	5.0	5.0	24.0	
26.0	4.4	4.8	3.2	4.3	4.7	26.0	
28.0	3.9	4.3	3.2	3.8	4.2	28.0	
30.0	3.4	3.8	3.2	3.3	3.7	30.0	
32.0	3.0	3.3	3.2	2.9	3.2	32.0	
34.0	2.6	3.0	3.2	2.4	2.9	34.0	
36.0	2.2	2.6	2.8	2.1	2.5	36.0	
38.0	1.9	2.3	2.5	1.7	2.1	38.0	
40.0	1.6	2.0	2.3	1.4	1.8	40.0	
42.0		1.7	2.0	1.2	1.5	42.0	
44.0		1.4	1.7		1.3	44.0	
Reeves	1	1	1	1	1	Reeves	

Note:

Ratings according to EN13000.

Ratings shown in are determined by the strength of the boom or other structural components.

Refer to notes P10.



Crane Boom Lifting Capacity with Fixed Jib

Unit: metric ton

Counterweight: 25.7 t, Carbody weight: 6.7 t

Boom length (m)	30.5			33.5			36.6			39.6			Boom length (m)	
Jib length (m)	6.1	12.2	18.3	6.1	12.2	18.3	6.1	12.2	18.3	6.1	12.2	18.3	Jib length (m)	
Working radius (m)	6.0	6.8m/31.9	6.8m/31.4	6.8m/30.9									6.0	
	7.0	30.9	30.4	29.9	7.3m/28.6	7.3m/28.1	7.3m/27.6	7.9m/25.6	7.9m/25.1	7.9m/24.6			7.0	
	8.0	26.7	26.2	25.7	24.6	24.1	23.6	23.8	23.3	22.8	8.4m/22.9	8.4m/22.4	8.4m/21.9	8.0
	9.0	23.4	22.9	22.4	21.5	21.0	20.5	20.9	20.4	19.9	21.3	20.8	20.3	9.0
	10.0	20.8	20.3	19.8	19.1	18.6	18.1	18.5	18.0	17.5	18.9	18.4	17.9	10.0
	12.0	16.8	16.3	15.8	15.3	14.8	14.3	14.9	14.4	13.9	15.4	14.9	14.4	12.0
	14.0	13.7	13.2	12.7	12.6	12.1	11.6	12.3	11.8	11.3	12.8	12.3	11.8	14.0
	16.0	11.2	10.7	10.2	10.4	9.9	9.4	10.3	9.8	9.3	10.8	10.3	9.8	16.0
	18.0	9.4	8.9	8.4	8.6	8.1	7.6	8.5	8.0	7.5	9.1	8.6	8.1	18.0
	20.0	8.0	7.5	7.0	7.2	6.7	6.2	7.1	6.6	6.1	7.6	7.1	6.6	20.0
	22.0	6.8	6.3	5.8	6.1	5.6	5.1	6.0	5.5	5.0	6.5	6.0	5.5	22.0
	24.0	5.9	5.4	4.9	5.2	4.7	4.2	5.1	4.6	4.1	5.5	5.0	4.5	24.0
	26.0	5.1	4.6	4.1	4.5	4.0	3.5	4.4	3.9	3.4	4.8	4.3	3.8	26.0
	28.0	27.7m/4.6	27.7m/4.1	27.7m/3.6	3.9	3.4	2.9	3.8	3.3	2.8	4.1	3.6	3.1	28.0
	30.0				3.4	2.9	2.4	3.2	2.7	2.2	3.6	3.1	2.6	30.0
	32.0				30.3m/2.9	30.3m/2.4	30.3m/1.9	2.8	2.3	1.8	3.1	2.6	2.1	32.0
34.0							33.0m/2.4	33.0m/1.9	33.0m/1.4	2.7	2.2	1.7	34.0	
36.0										35.0m/2.4	35.0m/1.9	35.0m/1.4	36.0	
Reeves	4	4	4	4	4	4	4	4	4	3	3	3	Reeves	

Boom length (m)	42.7			45.7			Boom length (m)	
Jib length (m)	6.1	12.2	18.3	6.1	12.2	18.3	Jib length (m)	
Working radius (m)	9.0	20.6	20.1	19.6	9.4m/19.0	9.4m/18.5	9.4m/18.0	9.0
	10.0	18.3	17.8	17.3	17.9	17.4	16.9	10.0
	12.0	14.9	14.4	13.9	14.5	14.0	13.5	12.0
	14.0	12.4	11.9	11.4	12.1	11.6	11.1	14.0
	16.0	10.4	9.9	9.4	10.2	9.7	9.2	16.0
	18.0	8.9	8.4	7.9	8.7	8.2	7.7	18.0
	20.0	7.5	7.0	6.5	7.4	6.9	6.4	20.0
	22.0	6.4	5.9	5.4	6.3	5.8	5.3	22.0
	24.0	5.4	4.9	4.4	5.3	4.8	4.3	24.0
	26.0	4.6	4.1	3.6	4.5	4.0	3.5	26.0
	28.0	4.0	3.5	3.0	3.9	3.4	2.9	28.0
	30.0	3.4	2.9	2.4	3.3	2.8	2.3	30.0
	32.0	2.9	2.4	1.9	2.8	2.3	1.8	32.0
	34.0	2.5	2.0	1.5	2.4	1.9	1.4	34.0
	36.0	2.2	1.7	1.2	2.1	1.6	1.1	36.0
	38.0	1.8	1.3		1.7	1.2		38.0
40.0	38.3m/1.8	38.3m/1.3		1.5			40.0	
42.0				40.9m/1.3			42.0	
Reeves	3	3	3	3	3	3	Reeves	

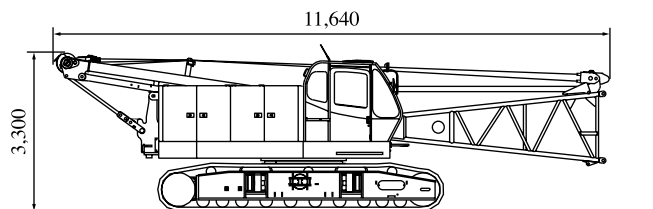
Note:
Ratings according to EN13000.
Refer to notes P10.

PARTS AND ATTACHMENTS

Dimensions: mm, Weight: kg

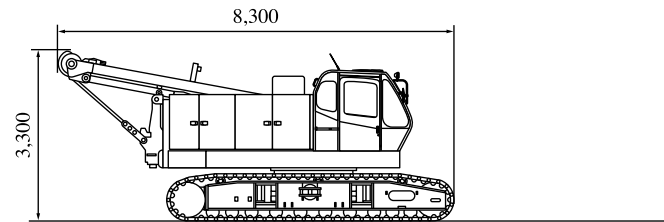
Base Machine

With main and aux. winches including wire rope
Weight: 40,770 kg Width: 3,390mm



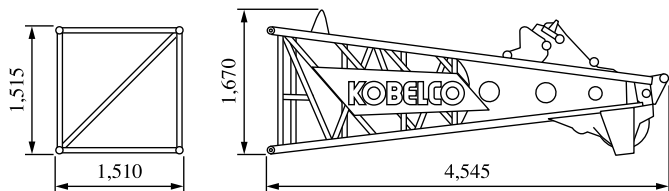
Base Machine

With main and aux. winches including wire rope
Weight: 38,660 kg Width: 3,390mm



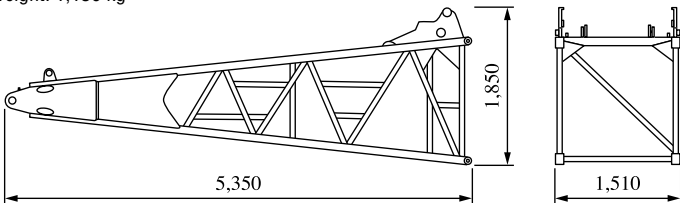
Boom Top (with guy cables)

Weight: 1,160 kg



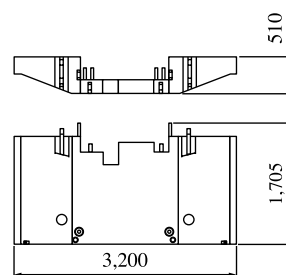
Boom Base

Weight: 1,130 kg



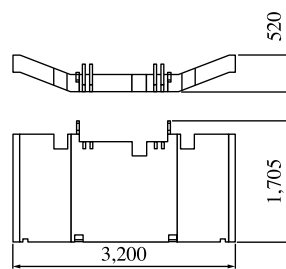
Counterweight A

Weight: 8,990 kg



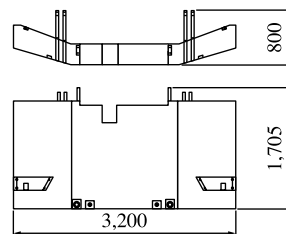
Counterweight B

Weight: 7,370 kg



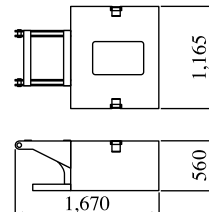
Counterweight C

Weight: 9,350 kg



Carbodyweight

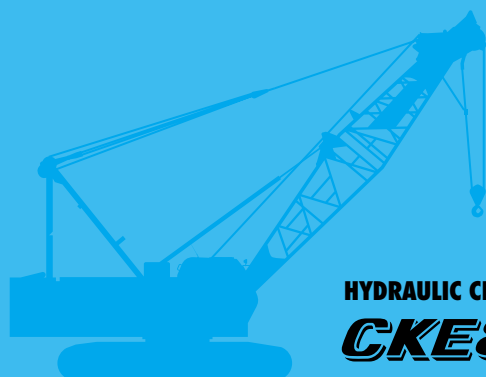
Weight: 3,340 kg (1 pc)



Other Attachments

Attachment	Weight	Dimensions (L x W x H)
3.0 m insert boom	360 kg (with guy cables)	3,160 mm x 1,510 mm x 1,515 mm
6.1 m insert boom	600 kg (with guy cables)	6,210 mm x 1,510 mm x 1,515 mm
6.1 m insert boom with lug	620 kg (with guy cables)	6,210 mm x 1,510 mm x 1,645 mm
9.1 m insert boom	840 kg (with guy cables)	9,260 mm x 1,510 mm x 1,515 mm
9.1 m insert boom with lug	860 kg (with guy cables)	9,260 mm x 1,510 mm x 1,645 mm
Jib top	145 kg	3,475 mm x 675 mm x 625 mm
Jib base	125 kg	3,190 mm x 675 mm x 625 mm
6.1 m insert jib	165 kg (with guy cables)	6,160 mm x 675 mm x 625 mm
Jib strut	190 kg	3,700 mm x 670 mm x 500 mm
Auxiliary sheave	140 kg	1,010 mm x 1,310 mm
Crawler (1pc)	6,950 kg	5,990 mm x 800 mm x 980 mm
Upper spreader	280 kg	1,580 mm x 300 mm x 680 mm
Lower spreader	170 kg	870 mm x 300 mm x 610 mm
6.6-ton ball hook	160 kg	815 mm x 300 mm dia.
19-ton hook block	400 kg	590 mm x 385 mm x 1,270 mm
32-ton hook block	500 kg	590 mm x 330 mm x 1,530 mm
55-ton hook block	650 kg	590 mm x 435 mm x 1,470 mm
80-ton hook block	800 kg	600 mm x 530 mm x 1,705 mm

Note: Estimated weights may vary ± 2%



HYDRAULIC CRAWLER CRANE
CKE800

Standard Equipment

Upper structure/Lower structure

Counterweight: 25.7 ton (total weight)
 Carbody weight: 6.7 ton (total weight)
 800 mm shoe crawlers
 Batteries (150 Ah/20HR)
 Travel kit
 Gantry raising/lowering cylinder
 Electric hand throttle grip
 Variable boom hoist speed controller
 Side deck for cab
 Steps (crawlers)
 Two front working lights
 Upper spreader storage guide
 Tools (for routine maintenance)
 Two rear view mirrors
 Mirror for monitoring drums
 Cable roller (for boom)
 Tool box (front of left-side guard)

Cab/Control

Boom hoist pedal
 Air conditioner
 Cup holder
 Ashtray
 Cigar lighter
 Intermittent wiper & window washer
 (skylight and front window)
 Sun visor
 Roof blind
 Floor mat (cloth)
 Foot rest
 Shoe tray
 Level gauge (operator cabin)

Safety Device

Load Moment Indicator (with boom lowering slow stop function)
 LMI release key (for hook over-hoist prevention device
 and boom over-hoist prevention device)
 LCD multi display
 Ultimate stop function for boom over-hoist
 Function lock lever
 Propel lever lock
 Mechanical drum lock pawl (main, aux. and boom hoist)
 Signal horn
 Swing parking brake
 Mechanical swing lock pin (two positions)
 Swing flashers/warning buzzer
 Cab window guard (left side)
 Cab top guard
 Fire extinguisher
 External lamp for over-load alarm
 Life hammer

Note: Standard equipment may vary depending on your areas or countries.

Due to our policy of continual product improvements all designs and specifications are subject to change without advance notice.

Copyright by KOBELCO CRANES CO., LTD. No part of this catalog may be reproduced in any manner without notice.



KOBELCO CRANES CO., LTD.

17-1, Higashigotanda 2-chome, Shinagawa-ku, Tokyo 141-8626 JAPAN
 Tel: +81-3-5789-2130 Fax: +81-3-5789-3372

Inquiries To:

KOBELCO is the corporate mark used by Kobe Steel on a variety of products and in the names of a number of Kobe Steel Group companies.