

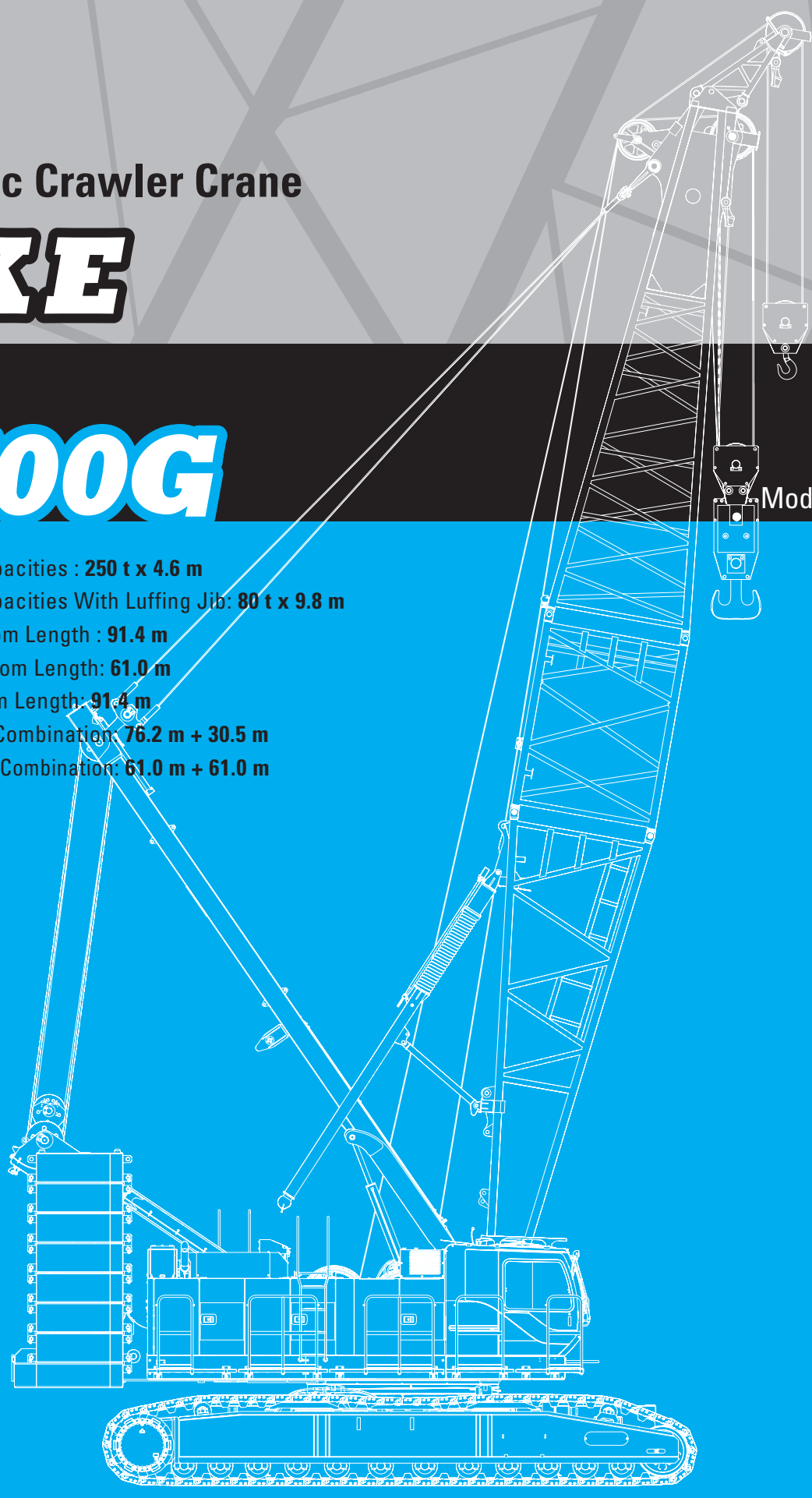
Hydraulic Crawler Crane

CKE

2500G

Model : CKE2500G

- Max. Lifting Capacities : **250 t x 4.6 m**
- Max. Lifting Capacities With Luffing Jib: **80 t x 9.8 m**
- Max. Crane Boom Length : **91.4 m**
- Max. Luffing Boom Length: **61.0 m**
- Max. Long Boom Length: **91.4 m**
- Max. Fixed Jib Combination: **76.2 m + 30.5 m**
- Max. Luffing Jib Combination: **61.0 m + 61.0 m**



KOBELCO



Power Plant

Model: HINO P11C-VC
Type: 4 cycle, water-cooled, vertical in-line 6, direct injection, turbo-charger, intercooler
 Complies with NRMM (Europe) Stage IIIB and US EPA Tier Interim Tier 4
Displacement: 10,520 liters
Rated power: 271 kW/1850 min⁻¹ (363 HP / 1,850 rpm)
Max. Torque: 1,469 N-m/1,400 min⁻¹
Cooling System: Water-cooled
Starter: 24 V-6 kW
Radiator: Corrugated type core, thermostatically controlled
Air cleaner: Dry type with replaceable paper element
Throttle: Twist grip type hand throttle, electrically actuated
Fuel filter: Replaceable paper element
Batteries: Two 12 V x 136 Ah/5 HR capacity batteries, series connected
Fuel tank capacity: 400 liters



Hydraulic System

Main pumps: 4 variable displacement piston pumps
Control: Full-flow hydraulic control system for infinitely variable pressure to all winches, propel and swing. Controls respond instantly to the touch, delivering smooth function operation.
Cooling: Oil-to-air heat exchanger (plate-fin type)
Filtration: Full-flow and bypass type with replaceable element
Max. relief valve pressure:
Load hoist, boom hoist and propel system: 31.9 MPa (4,626 psi)
Swing system: 27.5 MPa (3,989 psi)
Control system: 5.4 MPa (783 psi)
Hydraulic Tank Capacity: 650 liters (171.7 US Gal)



Boom Hoisting System

Powered by a hydraulic motor through a planetary reducer.
Brake: A spring-set, hydraulically released multiple-disc brake is mounted on the boom hoist motor and operated through a counter-balance valve.
Drum Lock: External ratchet for locking drum
Drum: Single drum, grooved for 26 mm dia. wire rope
Line Speed: Single line on first drum layer
Hoisting/Lowering: 22 to 2 m/min x 2
Diameter of wire rope
Main winch: 26 mm x 480 m (1-1/32 in x 1,575 ft)
Aux. winch: 26 mm x 390 m (1-1/32 in x 1,575 ft)
Third winch: 26 mm x 265 m (27/32 in x 869 ft)
Boom hoisting/lowering: 26 mm x 285 m (1-1/32 in x 935 ft)
Boom guy line: 38 m (1-1/2 in)
Boom backstops: Required for all boom length



Load Hoisting System

Front and rear drums for load hoist powered by a hydraulic variable plunger motors, driven through planetary reducers.
Negative Brake: A spring-set, hydraulically released multiple-disc brake is mounted on the hoist motor and operated through a counter-balance valve. (Positive free fall brake is optional)
Drum Lock: External ratchet for locking drum
Drums:
Front Drums: 618 mm (2 ft 5/16 inch) P.C.D x 864 m (2 ft 10-1/32 inch) wide drum, grooved for 26 mm (1-1/32 inch) wire rope. Rope capacity is 480 m (1,575 ft) working length and 510 m (1,673 ft) storage length.
Rear Drum: 618 mm (2 ft 5/16 inch) P.C.D x 864 m (2 ft 10-1/32 inch), grooved for 26 mm (1-1/32 inch) wire rope. Rope capacity is 390 m (1,280 ft) working length and 510 m (1,673 ft) storage length.
Line Speed: Single line on first drum layer
Hoisting/lowering: 110 to 3 m/min
Line Pull:
Max. Line Pull (Single Line): 233 kN (52,500 lbs) (Referential performance)
Rated Line Pull: 132 kN (29,500 lbs)



Swing System

Swing unit is powered by hydraulic motor driving spur gears through planetary reducers (2 set), the swing system provides 360° rotation.
Swing parking brakes: A spring-set, hydraulically released multiple-disc brake is mounted on swing motor.
Swing circle: Single-row ball bearing with an integral internally cut swing gear.
Swing lock: Manually, four position lock for transportation
Swing Speed: 2.0 min⁻¹ (2.0 rpm)



Upper Structure

Torsion-free precision machined upper frame. All components are located clearly and service friendly. Engine will with low noise level.
Counter weight: 90.4 ton




Cab & Control

Totally enclosed, full vision cab with safety glass, fully adjustable, high backed seat with a headrest and armrests, and intermittent wiper and window washer (skylight and front window).
Cab fittings:
 Air conditioner, convenient compartment (for tool), cup holder, ashtray, cigarette lighter, sun visor, roof blind, tinted glass, floor

mat, footrest, and shoe tray

Controls:

Four adjustable levers for front drum, rear drum, boom drum and swing controls.

 **Lower Structure**

Steel-welded carbody with axles. Crawler assemblies are designed with quick disconnect feature for individual removal as a unit from axles. Crawler belt tension is maintained by hydraulic jack force on the track adjusting bearing block.

Carbodyweight: 7.3 ton

Crawler drive: Independent hydraulic propel drive is built into each crawler side frame. Each drive consists of a hydraulic motor propelling a driving tumbler through a planetary gear box. Hydraulic motor and gear box are built into the crawler side frame within the shoe width.


Crawler brakes: Spring-set, hydraulically released parking brakes are built into each propel drive.

Steering mechanism: A hydraulic propel system provides both skid steering (driving one track only) and counter-rotating steering (driving each track in opposite directions).

Track rollers: Sealed track rollers for maintenance-free operation.

Shoe (flat): 1,220 mm wide each crawler

Max. gradeability: 30 %

 **Weight**

Including upper and lower machine, 90.4 ton counterweight and 27.5 ton carbody weight, basic boom (or basic boom + basic jib), hook, and other accessories.

Weight: 220 ton

Ground pressure: 112 kPa (15.0 psi)

 **Attachment**

Boom & Jib:

Welded lattice construction using tubular, high-tensile steel chords with pin connection between sections.

Boom and Jib length

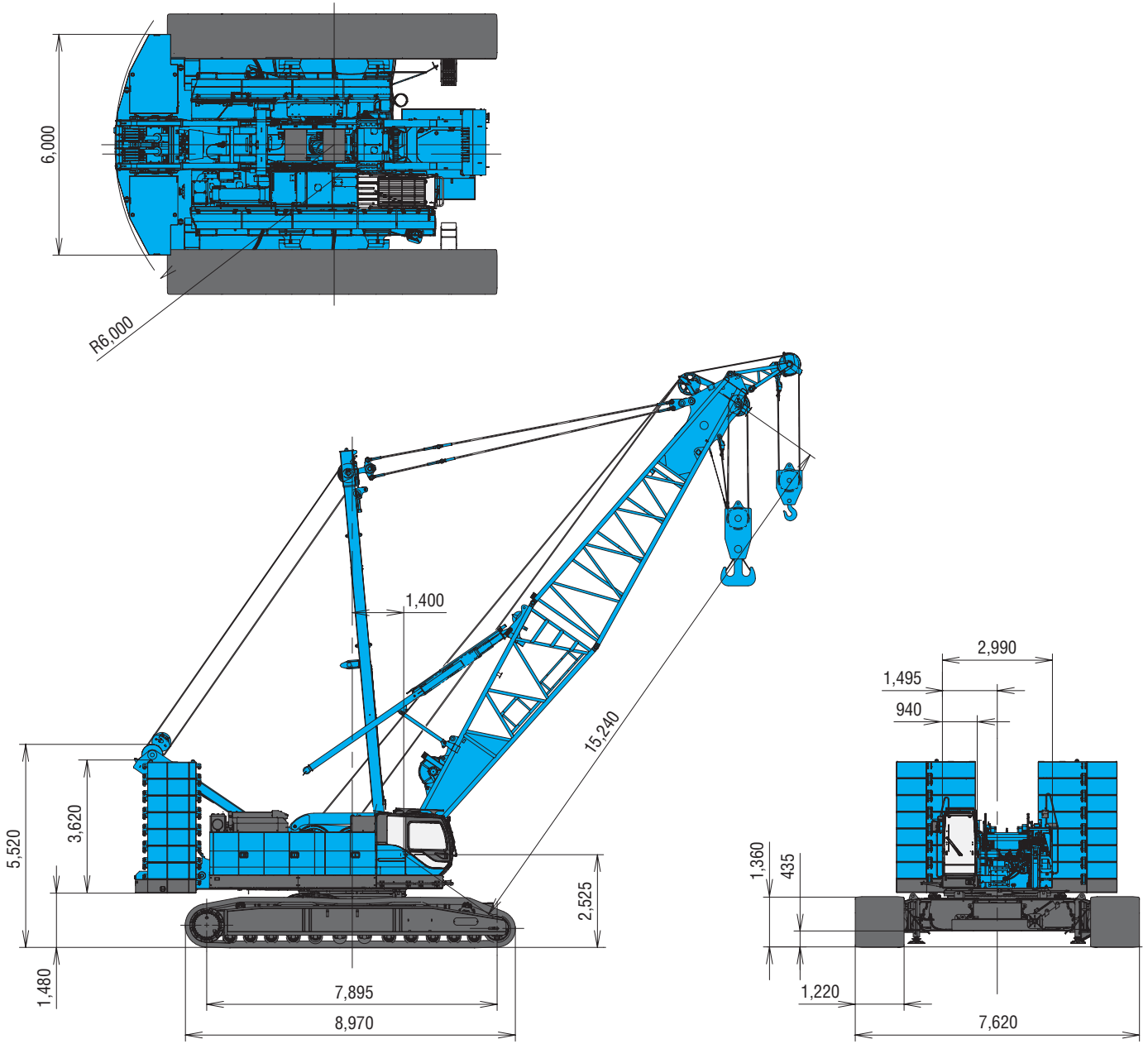
	Min. Length (Min. combination)	Max. Length (Min. combination)
Crane Boom	15.2 m	91.4 m
Fixed lib	27.4 m + 12.2 m	76.2 m + 30.5 m

Main Specifications (Model: CKE2500G)	
Crane Boom	
Max. Lifting Capacity	250 t x 4.6 m
Max. Length	91.4 m
Fixed Jib	
Max. Lifting Capacity	27.0 t x 10.4 m
Max. Combination	76.2 m + 30.5 m
Long Boom	
Max. Lifting Capacity	47.1 t/12.8 m
Max. Length	91.4 m
Luffing Boom	
Max. Lifting Capacity	150 t/ 7.0 m
Max. Length	61.0 m
Luffing Jib	
Max. Jib Length	61.0 m
Max. Combination	61.0 m + 61.0 m
Main & Aux. Winch	
Max. Line Speed (1st layer)	110 m/min
Rated Line Pull (Single line)	132 kN {13.5 tf}
Wire Rope Diameter	26 mm x 480 m
Wire Rope Length	480 m (Main), 390 m (Aux.)
Brake Type	Wet-type multiple disc brake (Optional)
Working Speed	
Swing Speed	2.0 min ⁻¹ {rpm}
Travel Speed	1.1/0.7 km/h
Power Plant	
Model	HINO P11C-VC
Engine Output	271 kW / 1850 min ⁻¹
Fuel Tank	400 liters
Hydraulic System	
Main Pumps	4 variable displacement
Max. Pressure	31.9 Mpa {325 kg/cm ² }
Hydraulic Tank Capacity	650 liters
Self-Removal Device	
	counterweight/crawler self-removal device (Standard)
Weight	
Operating Weight	220 t *1
Ground Pressure	112 kPa
Counterweight	90,400 kg
Transport Weight	44,960 kg *2

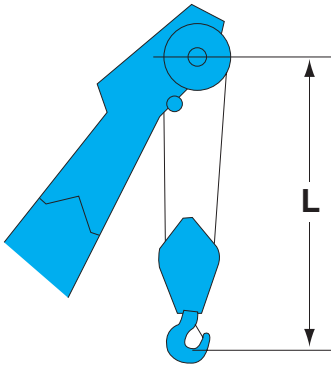
Units are SI units. { } indicates conventional units.
Line speeds in table are for light loads. Line speed varies with load.
*1 Including upper and lower machine, 90.4 ton counterweight, 27.5 ton carbody weight, basic boom, hook, and other accessories.
*2 Base Machine with gantry, wire ropes (front/rear/boom hoist)

Crane Boom

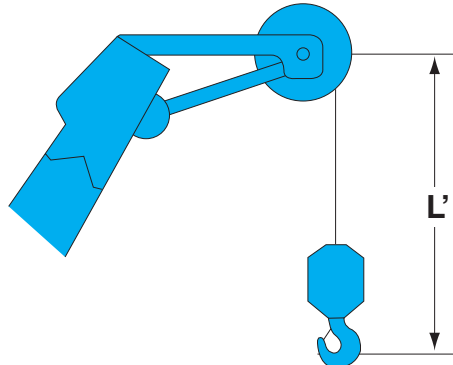
(Unit: mm)



Limit of Hook Lifting

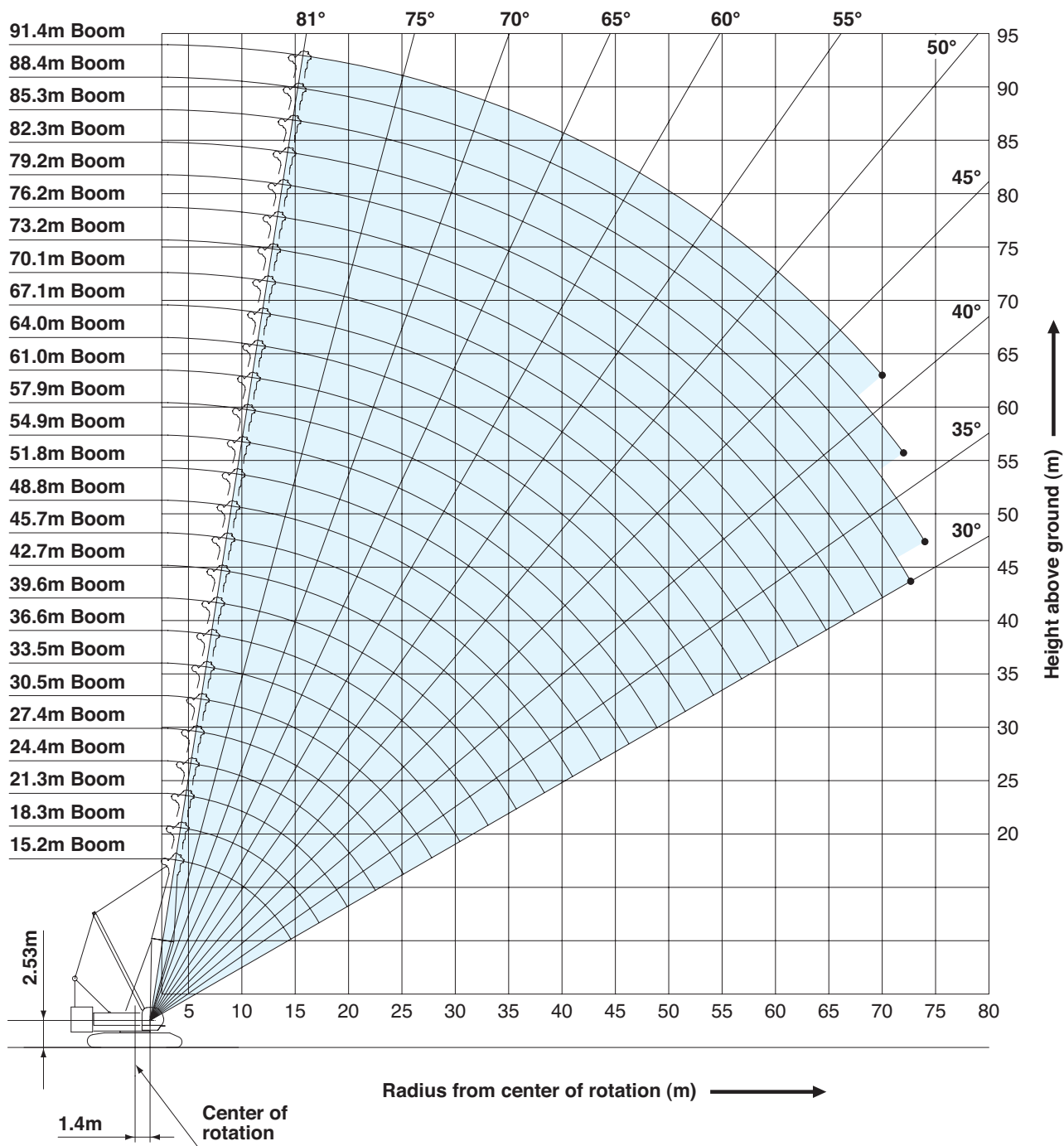


Hook	L
250 t hook	5.3 m
150 t hook	5.9 m
70 t hook	4.9 m
35 t hook	4.7 m

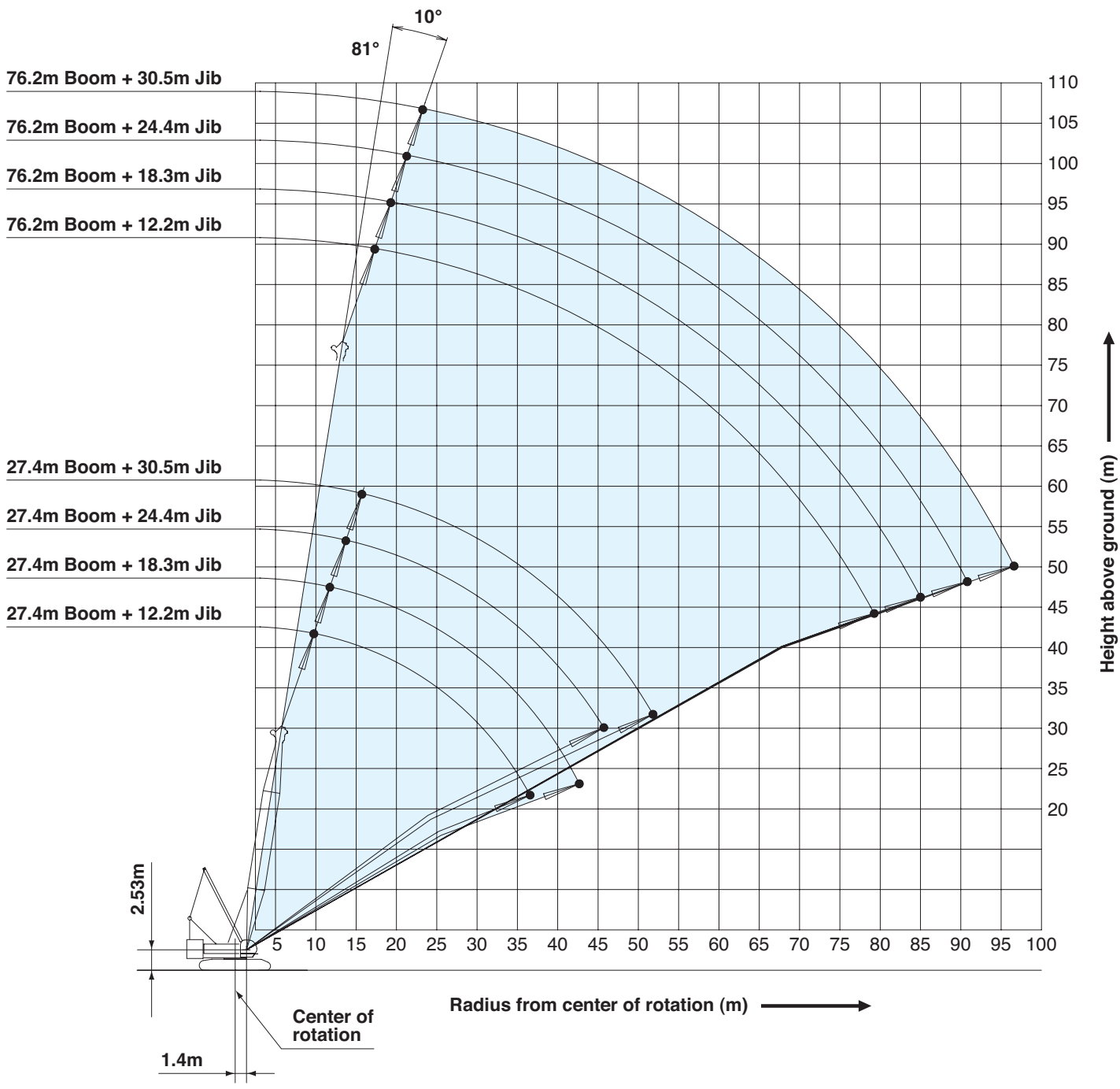


Hook	L'
13.5 t ball hook	3.8 m
13.5 t ball hook	3.5 m

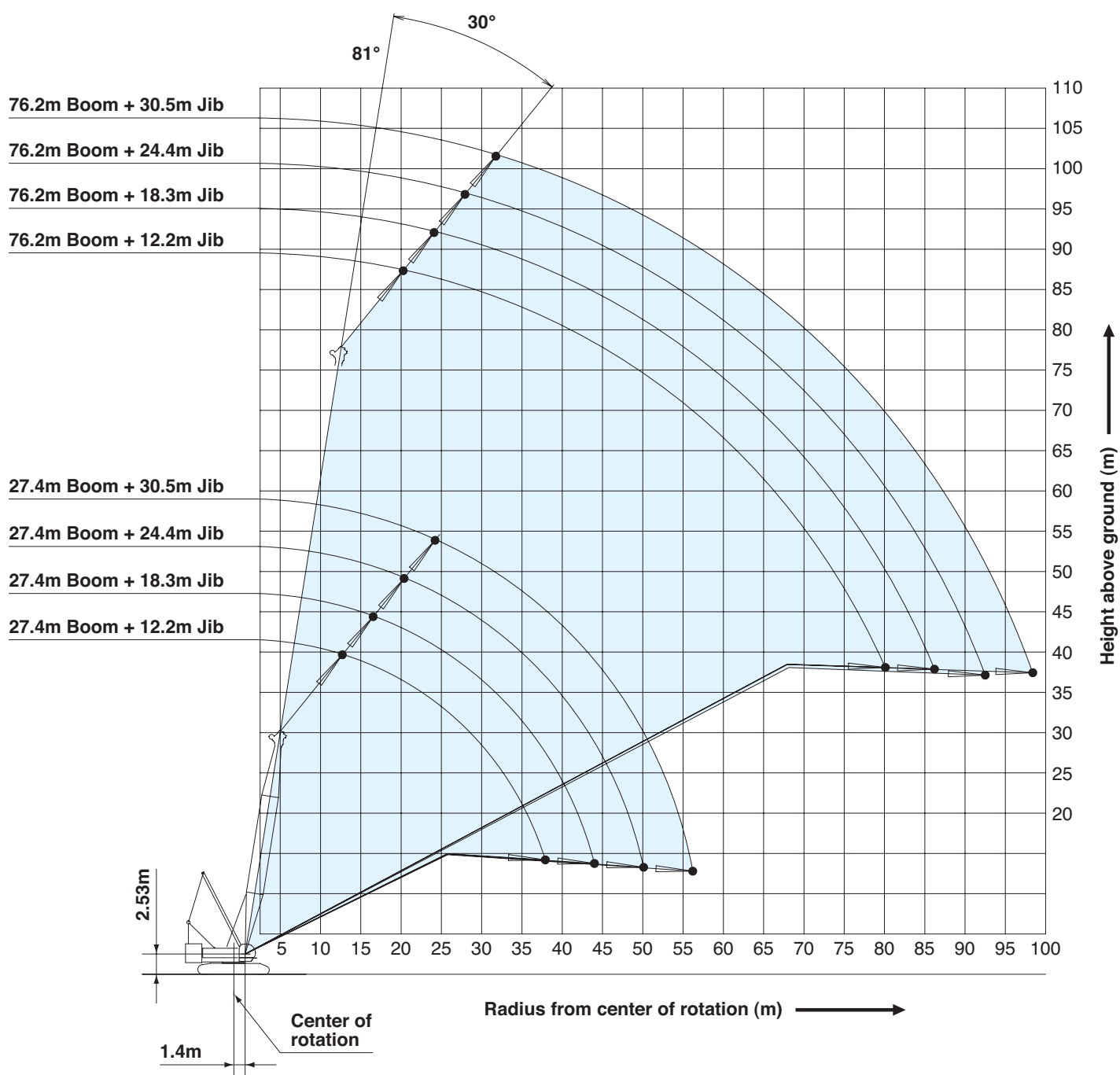
Crane Boom



Fixed Jib 10°



Fixed Jib 30°



- Ratings according to EN13000.
- Operating radius is the horizontal distance from centerline of rotation to a vertical line through the center of gravity of the load.
- Deduct weight of hook block (s), slings and all other load handling accessories from main boom ratings shown.
- Ratings shown are based on freely suspended loads and make no allowance for such factors as wind effect on lifted load, ground conditions, out-of-level, operating speeds or any other condition that could be detrimental to the safe operation of this equipment.
The operator, therefore, has the responsibility to judge the existing conditions and reduce lifted loads and operating speeds accordingly.
- Ratings are for operation on a firm and level surface, up to 1 % gradient.
- At radii and boom lengths where no ratings are shown on chart, Operation is not intended nor approved.
- Boom inserts and guy lines must be arranged as shown in the "operator's manual".
- Boom hoist reeving is 16 part line.
- Gantry must be in raised position for all conditions.
- Boom backstops are required for all boom lengths.
- The boom should be erected over the front of the crawlers, not laterally.
- Ratings inside of boxes are limited by strength of materials.
- The minimum rated load is 2.4 (ton).
- When erecting and lowering the standard boom length of 88.4 m or over and boom length of 76.2 m with fixed jib, the blocks for erection must be placed at the end of the crawlers.

(Main boom)

- The total load that can be lifted is the value for weight of hook block, slings, and all other load handling accessories deducted from main boom ratings shown.

(Main boom with auxiliary sheave frame)

- The total load that can be lifted is the value for weight of main hook block, slings, and all other load handling accessories deducted from main boom with auxiliary sheave ratings shown.

(Auxiliary sheave)

- The total load that can be lifted is the value for weight of auxiliary sheave hook block, slings, and all other load handling accessories deducted from auxiliary sheave ratings shown.
- Standard boom lengths for auxiliary sheave mounting are 15.2 m to 88.4 m.
- Luffing boom lengths for auxiliary sheave mounting are 15.2 m to 61.0 m.
- Long boom lengths for auxiliary sheave mounting are 64.0 m to 91.4 m.

Main hoist loads

No. of Parts of Line	1	2	3	4	5
Maximum Loads (kN)	132	265	397	530	662
Maximum Loads (t)	13.5	27.0	40.5	54.0	67.5

No. of Parts of Line	6	7	8	10	12
Maximum Loads (kN)	794	927	1,059	1,324	1,569
Maximum Loads (t)	81.0	94.5	108.0	135.0	160.0

No. of Parts of Line	14	16	18	20	22
Maximum Loads (kN)	1,795	2,010	2,226	2,354	2,452
Maximum Loads (t)	183.0	205.0	227.0	240.0	250.0

Auxiliary hoist loads

No. of Parts of Line	1	2
Maximum Loads (kN)	132	265
Maximum Loads (t)	13.5	27.0

Weight of hook block						
Hook Block	250 t	150 t	100 t	70 t	35 t	13.5 t Ball Hook
Weight (t)	4.2	2.3	1.8	1.2	0.9	0.45

(Main boom with fixed jib)

- The total load that can be lifted is the value for weight of main hook block, slings, and all other load handling accessories deducted from main boom with fixed jib ratings shown.
- Standard boom lengths for fixed jib mounting are 27.4 m to 76.2 m.

(Fixed jib)

- The total load that can be lifted is the value for weight of jib hook block, slings, and all other load handling accessories deducted from fixed jib ratings shown.
- Standard boom lengths for fixed jib mounting are 27.4 m to 76.2 m.
- One part of line on hook is not allowed to use for 12.2 m jib length with offset angle 10 degrees.

Operation of this equipment in excess of rated loads or disregard of instruction voids the warranty.

LIFTING CAPACITIES

01773 521414
www.johnsonplant.co.uk/hire
G.H. JOHNSON CRANE HIRE LTD.

G.H. JOHNSON CRANE HIRE LTD.
www.johnsonplant.co.uk/hire
01773 521414

Crane Boom Lifting Capacities														Counterweight: 90.4 t	Carbody Weight: 27.5 t	Unit: metric ton
Working Radius (m)	15.2	18.3	21.3	24.4	27.4	30.5	33.5	36.6	39.6	42.7	45.7	48.8	51.8	Boom Length (m)	Working Radius (m)	
4.6	4.6m/250.0														4.6	
5.0	230.7	5.0m/226.7	5.5m/205.0												5.0	
6.0	191.5	191.5	191.1	6.1m/183.0	6.6m/174.5										6.0	
7.0	165.9	165.6	165.2	165.0	164.7	7.1m/154.2	7.7m/143.8								7.0	
8.0	146.1	145.8	145.4	145.2	144.9	144.6	141.4	8.2m/127.3	8.7m/115.7						8.0	
9.0	130.4	130.1	129.8	129.6	129.2	127.0	127.3	123.8	114.8	9.2m/107.2	9.8m/98.3				9.0	
10.0	117.7	117.4	117.1	116.9	114.7	115.0	113.3	110.5	107.4	103.8	97.0	10.3m/92.6	10.8m/84.7		10.0	
12.0	90.0	90.2	90.2	90.2	90.2	90.1	90.0	89.9	87.8	85.9	83.8	82.0	79.5		12.0	
14.0	72.2	72.4	72.4	72.4	72.3	72.2	72.1	72.0	72.0	72.0	70.8	69.4	68.0		14.0	
16.0	14.8m/65.7	60.2	60.2	60.2	60.0	59.9	59.8	59.8	59.7	59.6	59.4	59.3	58.7		16.0	
18.0		17.5m/53.5	51.3	51.3	51.1	51.1	50.9	50.8	50.7	50.7	50.4	50.3	50.2		18.0	
20.0			44.6	44.6	44.4	44.3	44.1	44.0	43.9	43.9	43.6	43.5	43.4		20.0	
22.0			20.1m/44.3	39.3	39.1	39.0	38.7	38.7	38.6	38.5	38.3	38.2	38.0		22.0	
24.0				22.7m/37.6	34.8	34.7	34.5	34.4	34.3	34.2	34.0	33.8	33.7		24.0	
26.0					25.4m/32.3	31.3	30.9	30.8	30.7	30.7	30.4	30.3	30.1		26.0	
28.0						28.0m/28.3	28.0	27.9	27.8	27.7	27.4	27.3	27.1		28.0	
30.0							25.5	25.4	25.2	25.2	24.9	24.8	24.6		30.0	
32.0							30.7m/24.8	23.4	23.1	23.0	22.7	22.6	22.4		32.0	
34.0								33.3m/22.1	21.2	21.1	20.8	20.7	20.5		34.0	
36.0									35.9m/19.7	19.5	19.2	19.1	18.9		36.0	
38.0										18.0	17.7	17.6	17.4		38.0	
40.0										38.6m/17.6	16.4	16.3	16.1		40.0	
42.0											41.2m/15.7	15.2	14.9		42.0	
44.0												43.9m/14.2	13.9		44.0	
46.0													13.0		46.0	
48.0													46.5m/12.8		48.0	
Reeves	22	18	16	14	14	12	12	10	10	8	8	7	7		Reeves	

Working Radius (m)	54.9	57.9	61.0	64.0	67.1	70.1	73.2	76.2	79.3	82.3	85.3	88.4	91.4	Boom Length (m)	Working Radius (m)
10.0	11.4m/81.4	11.9m/76.1													10.0
12.0	78.0	75.5	12.4m/68.8	12.9m/67.5	13.5m/63.8										12.0
14.0	66.5	65.2	63.3	62.5	61.3	14.0m/59.4	14.5m/54.5	15.1m/49.1	15.6m/44.7						14.0
16.0	57.5	56.4	55.4	54.2	53.2	51.2	51.1	48.4	44.5	16.1m/40.9	16.6m/37.4	17.2m/33.8	17.7m/31.0		16.0
18.0	50.0	49.5	48.6	47.6	46.8	45.6	44.9	44.2	43.2	39.7	36.6	33.3	30.9		18.0
20.0	43.2	43.0	42.9	42.2	41.5	40.6	39.9	39.2	38.4	37.6	35.4	32.2	29.8		20.0
22.0	37.8	37.7	37.5	37.3	37.2	36.5	35.7	35.1	34.4	33.6	32.9	31.2	28.8		22.0
24.0	33.5	33.3	33.2	32.9	32.9	32.6	32.2	31.6	30.9	30.2	29.6	29.2	27.7		24.0
26.0	29.9	29.7	29.6	29.4	29.3	29.0	28.9	28.6	28.0	27.3	26.8	26.3	25.7		26.0
28.0	26.9	26.8	26.6	26.4	26.3	26.0	25.9	25.8	25.4	24.8	24.3	23.9	23.3		28.0
30.0	24.4	24.2	24.1	23.8	23.7	23.5	23.3	23.2	23.0	22.6	22.1	21.7	21.2		30.0
32.0	22.2	22.0	21.9	21.6	21.5	21.3	21.1	21.0	20.8	20.5	20.2	19.8	19.3		32.0
34.0	20.3	20.1	20.0	19.7	19.6	19.4	19.2	19.1	18.9	18.6	18.4	18.1	17.6		34.0
36.0	18.6	18.5	18.3	18.1	17.9	17.7	17.5	17.4	17.2	16.9	16.8	16.6	16.1		36.0
38.0	17.2	17.0	16.9	16.6	16.5	16.2	16.0	15.9	15.7	15.4	15.3	15.2	14.7		38.0
40.0	15.9	15.7	15.5	15.3	15.2	14.9	14.7	14.6	14.4	14.1	13.9	13.8	13.5		40.0
42.0	14.7	14.5	14.4	14.1	14.0	13.7	13.5	13.4	13.2	12.9	12.8	12.7	12.4		42.0
44.0	13.7	13.5	13.3	13.0	12.9	12.6	12.5	12.3	12.1	11.8	11.7	11.6	11.3		44.0
46.0	12.7	12.5	12.4	12.1	12.0	11.7	11.5	11.4	11.2	10.9	10.7	10.6	10.4		46.0
48.0	11.9	11.6	11.5	11.2	11.1	10.8	10.7	10.5	10.3	10.0	9.8	9.7	9.4		48.0
50.0	49.1m/11.4	10.9	10.7	10.4	10.3	10.0	9.9	9.7	9.5	9.1	8.9	8.8	8.5		50.0
52.0		51.8m/10.2	10.0	9.7	9.6	9.3	9.1	8.9	8.7	8.3	8.1	8.0	7.7		52.0
54.0			9.3	9.1	8.9	8.6	8.4	8.2	7.9	7.6	7.4	7.2	7.0		54.0
56.0			54.4m/9.2	8.4	8.3	7.9	7.7	7.5	7.2	6.9	6.7	6.5	6.3		56.0
58.0				57.1m/8.1	7.7	7.3	7.1	6.9	6.6	6.3	6.1	5.9	5.6		58.0
60.0					59.7m/7.2	6.7	6.5	6.3	6.0	5.7	5.5	5.3	5.0		60.0
62.0						6.2	6.0	5.8	5.5	5.1	4.9	4.8	4.5		62.0
64.0						62.3m/6.1	5.5	5.3	5.0	4.6	4.4	4.3	4.0		64.0
66.0							65.0m/5.3	4.8	4.5	4.2	4.0	3.8	3.5		66.0
68.0								67.6m/4.5	4.1	3.7	3.5	3.3	2.9		68.0
70.0									3.7	3.3	3.1	2.9	2.4		70.0
72.0									70.2m/3.6	2.9	2.7	2.5			72.0
74.0										72.9m/2.8	2.4				74.0
Reeves	7	6	6	5	5	5	5	4	4	4	3	3	3		Reeves

Note: Ratings according to EN13000.

Ratings shown in are determined by the strength of the boom or other structural components.

LIFTING CAPACITIES



Fixed Jib Lifting Capacities (Without Main Hook Block) Jib Offset Angle : 10°

Counterweight: 90.4 t
Carbody Weight: 27.5 t
Unit: metric ton

Boom length (m)	27.4				30.5				33.5				Boom length (m)
Jib Length (m)	12.2	18.3	24.4	30.5	12.2	18.3	24.4	30.5	12.2	18.3	24.4	30.5	Jib Length (m)
10.0	10.4m/27.0				11.0m/26.4				11.5m/26.5				10.0
12.0	25.5	12.5m/21.2			25.9	13.1m/21.2			26.3	13.6m/21.2			12.0
14.0	24.3	20.4	14.6m/12.1		24.7	20.7	15.1m/12.1		25.1	21.0	15.7m/12.1		14.0
16.0	23.0	19.3	11.8	16.7m/6.8	23.7	19.7	11.9	17.2m/6.8	24.1	20.0	12.1	17.8m/6.7	16.0
18.0	21.8	18.4	11.2	6.5	22.7	18.8	11.4	6.6	23.2	19.1	11.6	6.7	18.0
20.0	20.7	17.5	10.7	6.2	21.9	17.9	10.9	6.3	22.3	18.3	11.1	6.4	20.0
22.0	19.8	16.8	10.3	5.9	21.0	17.2	10.5	6.0	21.5	17.6	10.7	6.1	22.0
24.0	18.9	16.1	9.9	5.6	20.2	16.5	10.1	5.7	20.7	16.9	10.3	5.8	24.0
26.0	18.1	15.4	9.4	5.3	19.5	15.9	9.7	5.5	20.0	16.3	9.9	5.6	26.0
28.0	17.3	14.3	9.1	5.1	18.7	15.1	9.3	5.2	19.4	15.7	9.5	5.3	28.0
30.0	16.7	13.4	8.7	4.9	17.9	14.1	8.9	5.0	18.7	14.8	9.2	5.1	30.0
32.0	16.1	12.6	8.4	4.7	17.2	13.3	8.6	4.8	18.0	13.9	8.8	4.9	32.0
34.0	15.5	11.9	8.1	4.5	16.4	12.5	8.3	4.6	17.3	13.2	8.5	4.7	34.0
36.0	14.9	11.3	7.8	4.3	15.7	11.9	8.0	4.4	16.6	12.5	8.3	4.5	36.0
38.0	37.1m/14.5	10.7	7.6	4.2	15.0	11.3	7.8	4.3	15.8	11.9	8.0	4.4	38.0
40.0		10.3	7.3	4.0	39.8m/14.5	10.8	7.6	4.1	15.1	11.3	7.8	4.2	40.0
42.0		9.8	7.1	3.9		10.3	7.3	4.0	14.6	10.8	7.5	4.1	42.0
44.0		42.9m/9.7	6.9	3.8		9.9	7.1	3.9	42.4m/14.5	10.4	7.3	4.0	44.0
46.0			6.8	3.7		45.5m/9.7	7.0	3.8		10.0	7.1	3.8	46.0
48.0			6.6	3.6			6.8	3.7		9.7	7.0	3.8	48.0
50.0			48.6m/6.6	3.5			6.6	3.6		48.2m/9.7	6.8	3.7	50.0
52.0				3.3			51.2m/6.6	3.5			6.7	3.6	52.0
54.0				3.2				3.4			53.9m/6.6	3.5	54.0
56.0				54.3m/3.1				3.2				3.4	56.0
58.0								57.0m/3.0				3.2	58.0
60.0												59.6m/3.0	60.0
Reeves	2	2	1	1	2	2	1	1	2	2	1	1	Reeves

Boom length (m)	36.6				39.6				42.7				Boom length (m)
Jib Length (m)	12.2	18.3	24.4	30.5	12.2	18.3	24.4	30.5	12.2	18.3	24.4	30.5	Jib Length (m)
12.0	12.0m/26.6				12.6m/26.5				13.1m/26.5				12.0
14.0	25.5	14.1m/21.2			25.8	14.6m/21.2			26.1	15.2m/21.2			14.0
16.0	24.5	20.3	16.2m/12.1		24.8	20.6	16.7m/12.1		25.1	20.8	17.3m/12.1		16.0
18.0	23.6	19.4	11.7	18.3m/6.8	23.9	19.7	11.8	18.8m/6.8	24.3	20.0	12.0	19.3m/6.8	18.0
20.0	22.7	18.6	11.2	6.5	23.1	18.9	11.4	6.6	23.5	19.2	11.5	6.7	20.0
22.0	21.9	17.9	10.8	6.2	22.3	18.2	11.0	6.3	22.7	18.5	11.1	6.4	22.0
24.0	21.2	17.2	10.4	5.9	21.5	17.5	10.6	6.0	22.1	17.8	10.7	6.1	24.0
26.0	20.5	16.6	10.1	5.7	20.8	16.9	10.2	5.8	21.5	17.2	10.4	5.9	26.0
28.0	19.8	16.1	9.7	5.4	20.0	16.4	9.9	5.5	20.7	16.7	10.1	5.6	28.0
30.0	19.1	15.5	9.4	5.2	19.4	15.9	9.6	5.3	20.0	16.2	9.7	5.4	30.0
32.0	18.4	14.6	9.0	5.0	18.7	15.2	9.2	5.1	19.4	15.7	9.4	5.2	32.0
34.0	17.8	13.8	8.7	4.8	18.0	14.4	8.9	4.9	18.8	15.0	9.1	5.0	34.0
36.0	17.1	13.1	8.5	4.6	17.3	13.6	8.7	4.8	18.1	14.2	8.8	4.9	36.0
38.0	16.4	12.4	8.2	4.5	16.7	13.0	8.4	4.6	17.4	13.5	8.6	4.7	38.0
40.0	15.8	11.9	8.0	4.3	16.1	12.4	8.2	4.4	16.8	12.9	8.3	4.6	40.0
42.0	15.3	11.3	7.7	4.2	15.5	11.8	7.9	4.3	15.8	12.3	8.1	4.4	42.0
44.0	14.7	10.9	7.5	4.1	14.9	11.4	7.7	4.2	14.8	11.8	7.9	4.3	44.0
46.0	45.1m/14.4	10.5	7.3	4.0	14.2	10.9	7.5	4.1	14.0	11.4	7.7	4.2	46.0
48.0		10.1	7.2	3.8	47.7m/13.5	10.5	7.3	3.9	13.1	11.0	7.5	4.0	48.0
50.0		9.8	7.0	3.8		10.2	7.2	3.8	12.2	10.6	7.3	3.9	50.0
52.0		50.8m/9.6	6.8	3.7		9.8	7.0	3.8	50.3m/12.1	10.2	7.2	3.8	52.0
54.0			6.7	3.6		53.4m/9.6	6.9	3.7		9.9	7.0	3.8	54.0
56.0			6.6	3.5			6.7	3.6		56.1m/9.6	6.9	3.7	56.0
58.0			56.5m/6.5	3.4			6.6	3.5			6.8	3.6	58.0
60.0				3.4			59.2m/6.5	3.4			6.6	3.5	60.0
62.0				3.2				3.4			61.8m/6.6	3.5	62.0
64.0				62.3m/3.1				3.3				3.4	64.0
66.0								64.9m/3.1				3.3	66.0
68.0												67.5m/3.0	68.0
Reeves	2	2	1	1	2	2	1	1	2	2	1	1	Reeves

Note: Ratings according to EN13000.
Ratings shown in are determined by the strength of the boom or other structural components.
12.2 m jib length with offset angle 10 degrees, one part of line on hook is not allowed to use.

Fixed Jib Lifting Capacities (Without Main Hook Block) Counterweight: 90.4 t
Jib Offset Angle : 10° Carbody Weight: 27.5 t
 Unit: metric ton

Boom length (m)	45.7				48.8				51.8				Boom length (m)
Jib Length (m)	12.2	18.3	24.4	30.5	12.2	18.3	24.4	30.5	12.2	18.3	24.4	30.5	Jib Length (m)
12.0	13.6m/26.5												12.0
14.0	26.3	15.7m/21.2			14.1m/26.5				14.7m/26.5				14.0
16.0	25.4	21.0	17.8m/12.1		25.7	16.2m/21.2			25.9	16.8m/21.2			16.0
18.0	24.6	20.2	12.1	19.9m/6.7	24.9	20.5	18.3m/12.1		25.1	20.7	18.8m/12.1		18.0
20.0	23.8	19.5	11.6	6.7	24.1	19.7	11.8	20.4m/6.7	24.4	19.9	11.9	20.9m/6.8	20.0
22.0	23.0	18.8	11.3	6.4	23.2	19.0	11.4	6.5	23.5	19.3	11.5	6.6	22.0
24.0	22.2	18.1	10.9	6.2	22.4	18.4	11.0	6.3	22.8	18.6	11.1	6.3	24.0
26.0	21.5	17.5	10.5	5.9	21.6	17.8	10.7	6.0	22.1	18.1	10.8	6.1	26.0
28.0	20.7	17.0	10.2	5.7	20.9	17.3	10.4	5.8	21.5	17.5	10.5	5.9	28.0
30.0	20.0	16.5	9.9	5.5	20.3	16.8	10.1	5.6	20.9	17.0	10.2	5.7	30.0
32.0	19.3	16.0	9.6	5.3	19.7	16.3	9.8	5.4	20.3	16.6	9.9	5.5	32.0
34.0	18.6	15.6	9.3	5.1	19.1	15.8	9.5	5.2	19.7	16.1	9.6	5.3	34.0
36.0	17.8	14.8	9.0	5.0	18.5	15.3	9.2	5.0	19.2	15.7	9.3	5.1	36.0
38.0	17.1	14.0	8.8	4.8	17.8	14.6	8.9	4.9	17.7	15.1	9.1	5.0	38.0
40.0	16.3	13.4	8.5	4.6	16.7	13.9	8.7	4.7	16.4	14.4	8.8	4.8	40.0
42.0	15.5	12.8	8.3	4.5	15.5	13.3	8.5	4.6	15.2	13.8	8.6	4.7	42.0
44.0	14.6	12.3	8.1	4.4	14.4	12.8	8.2	4.5	14.1	13.2	8.4	4.5	44.0
46.0	13.6	11.8	7.9	4.2	13.4	12.3	8.0	4.3	13.1	12.7	8.2	4.4	46.0
48.0	12.7	11.4	7.7	4.1	12.5	11.8	7.8	4.2	12.2	12.2	8.0	4.3	48.0
50.0	11.9	11.0	7.5	4.0	11.7	11.4	7.7	4.1	11.4	11.8	7.8	4.2	50.0
52.0	11.2	10.6	7.3	3.9	11.0	11.0	7.5	4.0	10.7	11.1	7.6	4.1	52.0
54.0	53.0m/10.9	10.3	7.2	3.8	10.3	10.7	7.3	3.9	10.0	10.4	7.5	4.0	54.0
56.0		10.0	7.0	3.8	55.6m/9.8	10.0	7.2	3.8	9.4	9.8	7.3	3.9	56.0
58.0		9.7	6.9	3.7		9.5	7.0	3.7	8.8	9.2	7.2	3.8	58.0
60.0		58.7m/9.6	6.8	3.6		8.9	6.9	3.7	58.3m/8.7	8.6	7.1	3.7	60.0
62.0			6.7	3.5		61.4m/8.6	6.8	3.6		8.1	6.9	3.7	62.0
64.0			6.6	3.4			6.7	3.5		64.0m/7.7	6.8	3.6	64.0
66.0			64.4m/6.5	3.4			6.6	3.5			6.7	3.5	66.0
68.0				3.3			67.1m/6.5	3.4			6.6	3.5	68.0
70.0				3.1				3.4			69.7m/6.5	3.4	70.0
72.0				70.2m/3.1				3.2				3.4	72.0
74.0								72.8m/3.1				3.2	74.0
76.0												75.4m/3.0	76.0
Reeves	2	2	1	1	2	2	1	1	2	2	1	1	Reeves

Note: Ratings according to EN13000.
 Ratings shown in are determined by the strength of the boom or other structural components.
 12.2 m jib length with offset angle 10 degrees, one part of line on hook is not allowed to use.

LIFTING CAPACITIES

01773 521414
www.johnsonplant.co.uk/hire
G.H. JOHNSON CRANE HIRE LTD.

G.H. JOHNSON CRANE HIRE LTD.
www.johnsonplant.co.uk/hire
01773 521414


Fixed Jib Lifting Capacities (Without Main Hook Block)

Counterweight: 90.4 t
Carbody Weight: 27.5 t
Unit: metric ton

Jib Offset Angle : 10°

Boom length (m)		54.9				57.9				61.0				Boom length (m)	
Jib Length (m)		12.2	18.3	24.4	30.5	12.2	18.3	24.4	30.5	12.2	18.3	24.4	30.5	Jib Length (m)	
Working Radius (m)	14.0	15.2m/26.4				15.7m/26.5									14.0
	16.0	26.2	17.3m/21.1			26.4	17.8m/21.1			16.3m/26.5					16.0
	18.0	25.4	20.9	19.4m/12.1		25.6	21.1	19.9m/12.1		25.8	18.3m/21.1				18.0
	20.0	24.7	20.2	12.0	21.5m/6.8	24.9	20.4	12.1		25.1	20.6	20.4m/12.1			20.0
	22.0	23.9	19.5	11.6	6.7	24.1	19.7	11.7	22.0m/6.7	24.5	19.9	11.8	22.5m/6.7		22.0
	24.0	23.2	18.9	11.3	6.4	23.4	19.1	11.4	6.5	23.7	19.3	11.5	6.5		24.0
	26.0	22.5	18.3	10.9	6.2	22.8	18.5	11.0	6.2	23.1	18.8	11.1	6.3		26.0
	28.0	21.9	17.8	10.6	6.0	22.2	18.0	10.7	6.0	22.5	18.2	10.9	6.1		28.0
	30.0	21.3	17.3	10.3	5.8	21.6	17.5	10.5	5.8	21.9	17.7	10.6	5.9		30.0
	32.0	20.7	16.8	10.1	5.6	21.0	17.1	10.2	5.6	21.3	17.3	10.3	5.7		32.0
	34.0	20.1	16.4	9.8	5.4	20.3	16.6	9.9	5.5	20.1	16.8	10.0	5.5		34.0
	36.0	18.9	16.0	9.5	5.2	18.6	16.2	9.6	5.3	18.4	16.4	9.8	5.4		36.0
	38.0	17.4	15.6	9.2	5.1	17.1	15.8	9.4	5.1	16.9	16.1	9.5	5.2		38.0
	40.0	16.1	14.9	9.0	4.9	15.8	15.4	9.1	5.0	15.6	15.7	9.3	5.1		40.0
	42.0	14.9	14.2	8.8	4.8	14.6	14.7	8.9	4.8	14.4	14.8	9.1	4.9		42.0
	44.0	13.8	13.7	8.6	4.6	13.5	13.9	8.7	4.7	13.3	13.8	8.8	4.8		44.0
	46.0	12.8	13.1	8.3	4.5	12.5	13.0	8.5	4.6	12.3	12.8	8.6	4.7		46.0
	48.0	12.0	12.3	8.2	4.4	11.6	12.1	8.3	4.4	11.4	11.9	8.4	4.5		48.0
	50.0	11.1	11.6	8.0	4.3	10.8	11.2	8.1	4.3	10.6	11.1	8.3	4.4		50.0
	52.0	10.4	10.8	7.8	4.2	10.1	10.5	7.9	4.3	9.9	10.3	8.1	4.3		52.0
54.0	9.7	10.1	7.6	4.1	9.4	9.8	7.8	4.1	9.2	9.6	7.9	4.2		54.0	
56.0	9.1	9.5	7.5	4.0	8.8	9.2	7.6	4.0	8.6	9.0	7.8	4.1		56.0	
58.0	8.5	8.9	7.3	3.9	8.2	8.6	7.5	3.9	8.0	8.4	7.6	4.0		58.0	
60.0	8.0	8.3	7.2	3.8	7.6	8.0	7.3	3.9	7.4	7.8	7.5	3.9		60.0	
62.0	60.9m/7.8	7.8	7.1	3.7	7.1	7.5	7.2	3.8	6.9	7.3	7.3	3.9		62.0	
64.0		7.4	6.9	3.7	63.5m/6.8	7.0	7.1	3.7	6.5	6.8	7.2	3.8		64.0	
66.0		6.9	6.8	3.6		6.6	7.0	3.7	6.0	6.4	6.9	3.7		66.0	
68.0		66.6m/6.8	6.7	3.5		6.2	6.6	3.6	66.2m/6.0	6.0	6.5	3.6		68.0	
70.0			6.5	3.5		69.3m/5.9	6.2	3.5		5.6	6.0	3.6		70.0	
72.0			6.2	3.4			5.8	3.5		71.9m/5.2	5.7	3.5		72.0	
74.0			72.4m/6.1	3.4			5.5	3.4			5.3	3.5		74.0	
76.0				3.3			75.0m/5.3	3.4			5.0	3.4		76.0	
78.0				3.2				3.3			77.6m/4.7	3.4		78.0	
80.0				78.1m/3.2				3.2				3.3		80.0	
82.0								80.7m/3.1				3.3		82.0	
84.0												83.4m/3.0		84.0	
Reeves	2	2	1	1	2	2	1	1	2	2	1	1	Reeves		

Note: Ratings according to EN13000.
Ratings shown in are determined by the strength of the boom or other structural components.
12.2 m jib length with offset angle 10 degrees, one part of line on hook is not allowed to use.

 Fixed Jib Lifting Capacities (Without Main Hook Block)													Counterweight: 90.4 t	
													Carbody Weight: 27.5 t	
													Unit: metric ton	
Boom length (m)	64.0				67.1				70.1				Boom length (m)	
Jib Length (m)	12.2	18.3	24.4	30.5	12.2	18.3	24.4	30.5	12.2	18.3	24.4	30.5	Jib Length (m)	
16.0	16.8m/26.5				17.3m/26.4				17.9m/26.4				16.0	
18.0	26.0	18.9m/21.1			26.2	19.4m/21.1			26.4	19.9m/21.1			18.0	
20.0	25.3	20.7	21.0m/12.1		25.5	20.9	21.5m/12.1		25.7	21.1			20.0	
22.0	24.7	20.1	11.9	23.0m/6.7	24.9	20.3	12.0	23.6m/6.7	25.1	20.5	22.0m/12.0		22.0	
24.0	24.1	19.5	11.6	6.6	24.3	19.7	11.7	6.6	24.5	19.9	11.7	24.1m/6.7	24.0	
26.0	23.5	19.0	11.3	6.4	23.8	19.2	11.3	6.4	24.0	19.3	11.4	6.5	26.0	
28.0	23.0	18.4	11.0	6.2	23.1	18.6	11.1	6.2	23.4	18.8	11.1	6.3	28.0	
30.0	22.4	18.0	10.7	6.0	22.4	18.2	10.8	6.0	23.0	18.4	10.8	6.1	30.0	
32.0	21.7	17.5	10.4	5.8	21.4	17.7	10.5	5.9	20.9	17.9	10.6	5.9	32.0	
34.0	19.8	17.1	10.2	5.6	19.5	17.3	10.3	5.7	19.2	17.5	10.3	5.7	34.0	
36.0	18.1	16.7	9.9	5.4	17.8	16.9	10.0	5.5	17.5	17.1	10.1	5.6	36.0	
38.0	16.6	16.3	9.7	5.3	16.3	16.5	9.8	5.4	16.0	16.5	9.9	5.4	38.0	
40.0	15.3	15.7	9.4	5.1	15.0	15.5	9.5	5.2	14.7	15.2	9.6	5.3	40.0	
42.0	14.1	14.5	9.2	5.0	13.8	14.3	9.3	5.1	13.5	14.0	9.4	5.1	42.0	
44.0	13.0	13.5	9.0	4.9	12.7	13.2	9.1	4.9	12.4	12.9	9.2	5.0	44.0	
46.0	12.0	12.5	8.8	4.7	11.7	12.2	8.9	4.8	11.4	11.9	9.0	4.9	46.0	
48.0	11.1	11.6	8.6	4.6	10.9	11.3	8.7	4.7	10.5	11.0	8.8	4.8	48.0	
50.0	10.3	10.7	8.4	4.5	10.0	10.5	8.5	4.6	9.7	10.2	8.6	4.6	50.0	
52.0	9.6	10.0	8.2	4.4	9.3	9.7	8.3	4.4	9.0	9.4	8.4	4.5	52.0	
54.0	8.9	9.3	8.0	4.3	8.6	9.0	8.2	4.3	8.3	8.7	8.3	4.4	54.0	
56.0	8.2	8.7	7.9	4.2	8.0	8.4	8.0	4.3	7.6	8.1	8.1	4.3	56.0	
58.0	7.7	8.1	7.7	4.1	7.4	7.8	7.9	4.2	7.1	7.5	8.0	4.2	58.0	
60.0	7.1	7.5	7.6	4.0	6.8	7.2	7.7	4.1	6.5	6.9	7.5	4.2	60.0	
62.0	6.6	7.0	7.5	3.9	6.3	6.7	7.3	4.0	6.0	6.4	7.0	4.1	62.0	
64.0	6.1	6.5	7.0	3.9	5.9	6.2	6.8	3.9	5.5	5.9	6.5	4.0	64.0	
66.0	5.7	6.1	6.6	3.8	5.4	5.8	6.3	3.8	5.1	5.5	6.0	3.9	66.0	
68.0	5.3	5.7	6.2	3.7	5.0	5.4	5.9	3.8	4.7	5.1	5.6	3.8	68.0	
70.0	68.8m/5.1	5.3	5.7	3.6	4.6	5.0	5.5	3.7	4.3	4.7	5.2	3.8	70.0	
72.0		4.9	5.4	3.6	71.5m/4.4	4.6	5.1	3.7	3.9	4.3	4.8	3.7	72.0	
74.0		4.6	5.0	3.5		4.3	4.7	3.6	3.6	3.9	4.4	3.6	74.0	
76.0		74.6m/4.5	4.7	3.5		3.9	4.4	3.5	74.1m/3.6	3.6	4.1	3.6	76.0	
78.0			4.3	3.4		77.2m/3.8	4.1	3.5		3.3	3.8	3.5	78.0	
80.0			4.0	3.4			3.8	3.4		79.8m/3.0	3.5	3.4	80.0	
82.0			80.3m/4.0	3.4			3.5	3.4			3.2	3.3	82.0	
84.0				3.3			82.9m/3.3	3.3			2.9	3.1	84.0	
86.0				86.0m/3.2				3.1			85.6m/2.7	2.9	86.0	
88.0								3.0				2.7	88.0	
90.0								88.6m/2.9				2.5	90.0	
92.0												91.3m/2.3	92.0	
Reeves	2	2	1	1	2	2	1	1	2	2	1	1	Reeves	

Note: Ratings according to EN13000.

Ratings shown in are determined by the strength of the boom or other structural components.
 12.2 m jib length with offset angle 10 degrees, one part of line on hook is not allowed to use.

LIFTING CAPACITIES

01773 521414

www.johnsonplant.co.uk/hire

G.H. JOHNSON CRANE HIRE LTD.

G.H. JOHNSON CRANE HIRE LTD.

www.johnsonplant.co.uk/hire

01773 521414

Fixed Jib Lifting Capacities (Without Main Hook Block) Jib Offset Angle : 10°

Counterweight: 90.4 t
Carbody Weight: 27.5 t
Unit: metric ton

Boom length (m)	73.2				76.2							Boom length (m)
Jib Length (m)	12.2	18.3	24.4	30.5	12.2	18.3	24.4	30.5				Jib Length (m)
18.0	18.4m/26.4				18.9m/26.4							18.0
20.0	25.9	20.5m/21.1			26.1	21.0m/21.1						20.0
22.0	25.3	20.6	22.5m/12.1		25.5	20.8	23.1m/12.0					22.0
24.0	24.7	20.0	11.8	24.6m/6.7	24.9	20.2	11.9	25.2m/6.7				24.0
26.0	24.2	19.5	11.5	6.5	24.4	19.7	11.6	6.6				26.0
28.0	23.7	19.0	11.2	6.3	23.9	19.2	11.3	6.4				28.0
30.0	22.6	18.5	11.0	6.2	21.7	18.7	11.1	6.2				30.0
32.0	20.5	18.1	10.7	6.0	19.9	18.3	10.8	6.0				32.0
34.0	18.9	17.7	10.5	5.8	18.3	17.9	10.6	5.9				34.0
36.0	17.3	17.3	10.2	5.6	16.9	17.5	10.3	5.7				36.0
38.0	15.8	16.3	10.0	5.5	15.5	15.9	10.1	5.6				38.0
40.0	14.5	15.0	9.8	5.3	14.2	14.7	9.9	5.4				40.0
42.0	13.3	13.8	9.6	5.2	13.0	13.5	9.7	5.3				42.0
44.0	12.2	12.7	9.4	5.1	11.9	12.4	9.5	5.1				44.0
46.0	11.2	11.7	9.2	4.9	10.9	11.4	9.3	5.0				46.0
48.0	10.3	10.8	9.0	4.8	10.0	10.5	9.1	4.9				48.0
50.0	9.5	10.0	8.8	4.7	9.2	9.7	8.9	4.8				50.0
52.0	8.8	9.2	8.6	4.6	8.5	8.9	8.7	4.7				52.0
54.0	8.1	8.5	8.4	4.5	7.8	8.2	8.5	4.5				54.0
56.0	7.4	7.9	8.3	4.4	7.1	7.6	8.2	4.4				56.0
58.0	6.9	7.3	7.8	4.3	6.5	7.0	7.6	4.4				58.0
60.0	6.3	6.7	7.3	4.2	6.0	6.4	7.0	4.3				60.0
62.0	5.8	6.2	6.8	4.1	5.5	5.9	6.5	4.2				62.0
64.0	5.3	5.7	6.3	4.0	5.0	5.4	6.0	4.1				64.0
66.0	4.9	5.3	5.8	4.0	4.6	5.0	5.5	4.0				66.0
68.0	4.5	4.9	5.4	3.9	4.1	4.5	5.1	3.9				68.0
70.0	4.1	4.5	5.0	3.8	3.7	4.1	4.7	3.9				70.0
72.0	3.7	4.1	4.6	3.8	3.4	3.8	4.3	3.8				72.0
74.0	3.4	3.7	4.3	3.7	3.0	3.4	4.0	3.7				74.0
76.0	3.0	3.4	3.9	3.6	2.7	3.1	3.6	3.7				76.0
78.0	76.7m/2.9	3.1	3.6	3.6	2.4	2.8	3.3	3.5				78.0
80.0		2.8	3.3	3.4	79.4m/2.2	2.5	3.0	3.3				80.0
82.0		2.5	3.0	3.3		2.2	2.7	3.0				82.0
84.0		82.5m/2.5	2.7	3.0		1.9	2.4	2.7				84.0
86.0			2.5	2.7		85.1m/1.8	2.2	2.5				86.0
88.0			2.2	2.4			1.9	2.2				88.0
90.0			88.2m/2.2	2.1			1.7	2.0				90.0
92.0				1.9			90.8m/1.5	1.7				92.0
94.0				93.9m/1.8				1.6				94.0
96.0								1.4				96.0
98.0								96.6m/1.3				98.0
Reeves	2	2	1	1	2	2	1	1				Reeves

Note: Ratings according to EN13000.
Ratings shown in are determined by the strength of the boom or other structural components.
12.2 m jib length with offset angle 10 degrees, one part of line on hook is not allowed to use.

Fixed Jib Lifting Capacities (Without Main Hook Block)													Counterweight: 90.4 t Carbody Weight: 27.5 t	
Jib Offset Angle : 30°													Unit: metric ton	
Boom length (m)	27.4				30.5				33.5				Boom length (m)	
Jib Length (m)	12.2	18.3	24.4	30.5	12.2	18.3	24.4	30.5	12.2	18.3	24.4	30.5	Jib Length (m)	
14.0	14.1m/19.3				14.6m/19.3				15.2m/19.3				14.0	
16.0	18.7				18.9				19.0				16.0	
18.0	17.9	18.0m/13.5			18.3	18.6m/13.5			18.5	19.1m/13.5			18.0	
20.0	16.8	13.5	21.9m/8.2		17.3	13.5			17.7	13.5			20.0	
22.0	15.9	13.1	8.2		16.4	13.2	22.5m/8.2		16.8	13.4	23.0m/8.1		22.0	
24.0	15.2	12.6	7.9	25.9m/4.4	15.6	12.9	8.0		16.0	13.0	8.0		24.0	
26.0	14.5	12.0	7.6	4.4	14.9	12.3	7.7	26.4m/4.4	15.4	12.6	7.8	26.9m/4.4	26.0	
28.0	13.9	11.4	7.4	4.2	14.4	11.7	7.5	4.3	14.8	12.0	7.6	4.3	28.0	
30.0	13.4	10.9	7.2	4.1	13.8	11.2	7.3	4.1	14.2	11.5	7.3	4.2	30.0	
32.0	13.0	10.4	7.0	3.9	13.4	10.7	7.1	4.0	13.8	11.0	7.2	4.0	32.0	
34.0	12.7	10.0	6.8	3.8	13.0	10.3	6.9	3.9	13.4	10.6	7.0	3.9	34.0	
36.0	12.5	9.7	6.6	3.7	12.7	10.0	6.7	3.8	13.0	10.3	6.8	3.8	36.0	
38.0	37.9m/12.4	9.4	6.5	3.7	12.5	9.7	6.6	3.7	12.7	9.9	6.7	3.7	38.0	
40.0		9.2	6.3	3.6	12.4	9.4	6.4	3.6	12.5	9.6	6.5	3.7	40.0	
42.0		9.0	6.2	3.5	40.5m/12.4	9.2	6.3	3.5	12.4	9.4	6.4	3.6	42.0	
44.0		44.0m/8.9	6.2	3.4		9.0	6.2	3.5	43.2m/12.4	9.2	6.3	3.5	44.0	
46.0			6.1	3.3		8.9	6.1	3.4		9.0	6.2	3.4	46.0	
48.0			6.1	3.3		46.6m/8.9	6.1	3.3		8.9	6.1	3.4	48.0	
50.0			6.1	3.3			6.1	3.3		49.3m/8.9	6.1	3.3	50.0	
52.0			50.1m/6.1	3.2			6.1	3.3			6.1	3.3	52.0	
54.0				3.0			52.7m/6.1	3.2			6.1	3.3	54.0	
56.0				2.9				3.0			55.4m/6.1	3.2	56.0	
58.0				56.2m/2.8				2.9				3.0	58.0	
60.0								58.8m/2.8				2.9	60.0	
62.0												61.4m/2.7	62.0	
Reeves	2	1	1	1	2	1	1	1	2	1	1	1	Reeves	

Boom length (m)	36.6				39.6				42.7				Boom length (m)
Jib Length (m)	12.2	18.3	24.4	30.5	12.2	18.3	24.4	30.5	12.2	18.3	24.4	30.5	Jib Length (m)
14.0	15.7m/19.3												14.0
16.0	19.2				16.2m/19.2				16.8m/19.2				16.0
18.0	18.7	19.6m/13.5			18.8				19.0				18.0
20.0	18.1	13.5			18.4	20.1m/13.5			18.6	20.7m/13.5			20.0
22.0	17.2	13.5	23.5m/8.1		17.5	13.5			17.9	13.5			22.0
24.0	16.4	13.1	8.1		16.8	13.2	24.1m/8.1		17.1	13.3	24.6m/8.1		24.0
26.0	15.7	12.8	7.9	27.5m/4.3	16.1	13.0	7.9		16.4	13.1	8.0		26.0
28.0	15.1	12.3	7.6	4.3	15.5	12.5	7.7	28.0m/4.4	15.8	12.8	7.8	28.5m/4.4	28.0
30.0	14.6	11.8	7.4	4.2	14.9	12.0	7.5	4.2	15.3	12.3	7.6	4.3	30.0
32.0	14.1	11.3	7.2	4.1	14.5	11.6	7.3	4.1	14.8	11.8	7.4	4.2	32.0
34.0	13.7	10.9	7.1	4.0	14.0	11.1	7.2	4.0	14.3	11.4	7.2	4.1	34.0
36.0	13.3	10.5	6.9	3.9	13.6	10.8	7.0	3.9	13.9	11.0	7.1	4.0	36.0
38.0	13.0	10.2	6.8	3.8	13.3	10.4	6.8	3.8	13.6	10.7	6.9	3.9	38.0
40.0	12.8	9.9	6.6	3.7	13.0	10.1	6.7	3.7	13.3	10.4	6.8	3.8	40.0
42.0	12.6	9.6	6.5	3.6	12.8	9.9	6.6	3.7	13.0	10.1	6.7	3.7	42.0
44.0	12.4	9.4	6.4	3.5	12.6	9.6	6.5	3.6	12.8	9.8	6.6	3.6	44.0
46.0	45.8m/12.4	9.2	6.3	3.5	12.4	9.4	6.4	3.5	12.6	9.6	6.4	3.6	46.0
48.0		9.1	6.2	3.4	12.4	9.2	6.3	3.5	12.4	9.4	6.4	3.5	48.0
50.0		8.9	6.1	3.4	48.4m/12.4	9.1	6.2	3.4	12.4	9.2	6.3	3.5	50.0
52.0		51.9m/8.9	6.1	3.3		9.0	6.1	3.4	51.1m/12.0	9.1	6.2	3.4	52.0
54.0			6.1	3.3		8.9	6.1	3.3		9.0	6.1	3.3	54.0
56.0			6.1	3.2		54.5m/8.9	6.1	3.3		8.9	6.1	3.3	56.0
58.0			58.0m/6.1	3.1			6.1	3.3		57.2m/8.9	6.1	3.3	58.0
60.0				3.0			6.1	3.2			6.1	3.2	60.0
62.0				2.9			60.6m/6.1	3.1			6.1	3.2	62.0
64.0				2.8				3.0			63.3m/6.1	3.2	64.0
66.0				64.1m/2.8				2.8				3.0	66.0
68.0								66.7m/2.7				2.9	68.0
70.0												69.4m/2.7	70.0
Reeves	2	1	1	1	2	1	1	1	2	1	1	1	Reeves

Note: Ratings according to EN13000.
Ratings shown in are determined by the strength of the boom or other structural components.


LIFTING CAPACITIES

www.johnsonplant.co.uk/hire 01773 521414

G.H. JOHNSON CRANE HIRE LTD.

www.johnsonplant.co.uk/hire

01773 521414

 Fixed Jib Lifting Capacities (Without Main Hook Block) Counterweight: 90.4 t Carbody Weight: 27.5 t													
Unit: metric ton													
Boom length (m)	45.7				48.8				51.8				Boom length (m)
Jib Length (m)	12.2	18.3	24.4	30.5	12.2	18.3	24.4	30.5	12.2	18.3	24.4	30.5	Jib Length (m)
16.0	17.3m/19.2				17.8m/19.2								16.0
18.0	19.1				19.2				18.3m/19.2				18.0
20.0	18.7	21.2m/13.5			18.8	21.7m/13.5			18.9				20.0
22.0	18.2	13.5			18.4	13.5			18.5	22.3m/13.5			22.0
24.0	17.4	13.4	25.1m/8.1		17.7	13.5	25.6m/8.1		18.0	13.5			24.0
26.0	16.7	13.2	8.0		17.0	13.3	8.1		17.3	13.3	26.2m/8.1		26.0
28.0	16.1	12.9	7.8	29.0m/4.4	16.4	13.0	7.9	29.6m/4.2	16.7	13.1	7.9		28.0
30.0	15.6	12.5	7.6	4.3	15.9	12.7	7.7	4.2	16.2	12.9	7.8	30.1m/4.2	30.0
32.0	15.1	12.0	7.5	4.2	15.4	12.2	7.5	4.2	15.7	12.4	7.6	4.2	32.0
34.0	14.6	11.6	7.3	4.1	14.9	11.8	7.4	4.1	15.2	12.0	7.4	4.2	34.0
36.0	14.2	11.2	7.1	4.0	14.5	11.4	7.2	4.0	14.8	11.7	7.3	4.1	36.0
38.0	13.9	10.9	7.0	3.9	14.1	11.1	7.1	3.9	14.4	11.3	7.1	4.0	38.0
40.0	13.5	10.6	6.9	3.8	13.8	10.8	6.9	3.8	14.1	11.0	7.0	3.9	40.0
42.0	13.3	10.3	6.7	3.7	13.5	10.5	6.8	3.8	13.7	10.7	6.9	3.8	42.0
44.0	13.0	10.0	6.6	3.7	13.2	10.2	6.7	3.7	13.5	10.4	6.8	3.7	44.0
46.0	12.8	9.8	6.5	3.6	13.0	10.0	6.6	3.6	13.2	10.2	6.7	3.7	46.0
48.0	12.6	9.6	6.4	3.5	12.8	9.8	6.5	3.6	12.5	10.0	6.6	3.6	48.0
50.0	12.1	9.4	6.3	3.5	11.9	9.6	6.4	3.5	11.7	9.7	6.5	3.5	50.0
52.0	11.3	9.2	6.3	3.4	11.2	9.4	6.3	3.4	10.9	9.5	6.4	3.5	52.0
54.0	53.7m/10.7	9.1	6.2	3.4	10.4	9.2	6.2	3.4	10.2	9.4	6.3	3.4	54.0
56.0		9.0	6.1	3.3	9.8	9.1	6.2	3.4	9.5	9.2	6.2	3.4	56.0
58.0		8.9	6.1	3.3	56.4m/9.7	9.0	6.1	3.3	8.9	9.1	6.2	3.4	58.0
60.0		59.8m/8.9	6.1	3.3		8.9	6.1	3.3	59.0m/8.6	9.0	6.1	3.3	60.0
62.0			6.1	3.3		8.6	6.1	3.3		8.4	6.1	3.3	62.0
64.0			6.1	3.2		62.5m/8.5	6.1	3.2		7.9	6.0	3.3	64.0
66.0			65.9m/6.1	3.1			6.1	3.2		65.1m/7.6	6.0	3.2	66.0
68.0				3.0			6.1	3.1			6.0	3.2	68.0
70.0				2.9			68.6m/6.1	3.0			6.0	3.2	70.0
72.0				72.0m/2.8				2.9			71.2m/6.0	3.1	72.0
74.0								2.8				3.0	74.0
76.0								74.6m/2.7				2.8	76.0
78.0												77.3m/2.7	78.0
Reeves	2	1	1	1	2	1	1	1	2	1	1	1	Reeves

Note: Ratings according to EN13000.

Ratings shown in are determined by the strength of the boom or other structural components.

Fixed Jib Lifting Capacities (Without Main Hook Block) Counterweight: 90.4 t
 Carbody Weight: 27.5 t
 Jib Offset Angle : 30° Unit: metric ton

Boom length (m)	54.9				57.9				61.0				Boom length (m)
Jib Length (m)	12.2	18.3	24.4	30.5	12.2	18.3	24.4	30.5	12.2	18.3	24.4	30.5	Jib Length (m)
18.0	18.9m/19.2				19.4m/19.2				19.9m/19.2				18.0
20.0	19.0				19.1				19.2				20.0
22.0	18.6	22.8m/13.5			18.7	23.3m/13.5			18.8	23.8m/13.5			22.0
24.0	18.2	13.5			18.4	13.5			18.5	13.5			24.0
26.0	17.6	13.4	26.7m/8.1		17.8	13.5	27.2m/8.1		18.1	13.5	27.8m/8.1		26.0
28.0	17.0	13.2	8.0		17.2	13.3	8.0		17.5	13.3	8.1		28.0
30.0	16.4	12.9	7.8	30.6m/4.3	16.7	13.0	7.9	31.2m/4.3	16.9	13.1	7.9	31.7m/4.3	30.0
32.0	15.9	12.6	7.6	4.3	16.2	12.8	7.7	4.3	16.4	12.9	7.7	4.3	32.0
34.0	15.5	12.2	7.5	4.2	15.7	12.4	7.5	4.2	16.0	12.6	7.6	4.2	34.0
36.0	15.1	11.8	7.3	4.1	15.3	12.0	7.4	4.1	15.5	12.2	7.4	4.1	36.0
38.0	14.7	11.5	7.2	4.0	14.9	11.7	7.3	4.0	15.1	11.9	7.3	4.0	38.0
40.0	14.3	11.2	7.1	3.9	14.5	11.4	7.1	3.9	14.8	11.5	7.2	4.0	40.0
42.0	14.0	10.9	6.9	3.8	14.2	11.1	7.0	3.9	14.4	11.2	7.1	3.9	42.0
44.0	13.7	10.6	6.8	3.8	13.9	10.8	6.9	3.8	13.7	11.0	7.0	3.8	44.0
46.0	13.2	10.4	6.7	3.7	12.9	10.5	6.8	3.7	12.7	10.7	6.8	3.8	46.0
48.0	12.2	10.1	6.6	3.7	12.0	10.3	6.7	3.7	11.8	10.5	6.7	3.7	48.0
50.0	11.4	9.9	6.5	3.6	11.1	10.1	6.6	3.6	11.0	10.2	6.6	3.6	50.0
52.0	10.6	9.7	6.4	3.5	10.3	9.9	6.5	3.5	10.2	10.0	6.6	3.6	52.0
54.0	9.9	9.5	6.4	3.5	9.6	9.7	6.4	3.5	9.5	9.8	6.5	3.5	54.0
56.0	9.2	9.4	6.3	3.4	9.0	9.5	6.3	3.5	8.8	9.6	6.4	3.5	56.0
58.0	8.6	9.2	6.2	3.4	8.3	9.1	6.3	3.4	8.2	8.9	6.3	3.4	58.0
60.0	8.1	8.7	6.2	3.3	7.7	8.5	6.2	3.4	7.6	8.3	6.3	3.4	60.0
62.0	61.6m/7.6	8.2	6.1	3.3	7.2	7.9	6.2	3.3	7.1	7.8	6.2	3.3	62.0
64.0		7.7	6.1	3.3	6.7	7.4	6.1	3.3	6.6	7.3	6.2	3.3	64.0
66.0		7.2	6.0	3.2	64.3m/6.7	6.9	6.1	3.3	6.1	6.8	6.1	3.3	66.0
68.0		67.7m/6.8	6.0	3.2		6.4	6.0	3.3	66.9m/5.9	6.3	6.1	3.3	68.0
70.0			6.0	3.2		6.0	6.0	3.2		5.9	6.0	3.2	70.0
72.0			6.0	3.2		70.4m/5.9	6.0	3.2		5.5	5.9	3.2	72.0
74.0			73.8m/6.0	3.1			5.7	3.1		73.0m/5.3	5.5	3.2	74.0
76.0				3.0			5.3	3.0			5.1	3.2	76.0
78.0				2.9			76.5m/5.2	2.9			4.8	3.1	78.0
80.0				79.9m/2.8				2.9			79.1m/4.6	3.0	80.0
82.0								2.8				2.9	82.0
84.0								82.6m/2.7				2.8	84.0
86.0												85.2m/2.7	86.0
Reeves	2	1	1	1	2	1	1	1	2	1	1	1	Reeves

Note: Ratings according to EN13000.
 Ratings shown in are determined by the strength of the boom or other structural components.

LIFTING CAPACITIES



Fixed Jib Lifting Capacities (Without Main Hook Block) Jib Offset Angle : 30°

Counterweight: 90.4 t
Carbody Weight: 27.5 t

Unit: metric ton

Boom length (m)	64.0				67.1				70.1				Boom length (m)
Jib Length (m)	12.2	18.3	24.4	30.5	12.2	18.3	24.4	30.5	12.2	18.3	24.4	30.5	Jib Length (m)
20.0	20.5m/19.2				21.0m/19.1				21.5m/19.1				20.0
22.0	18.9				19.0				19.1				22.0
24.0	18.6	24.4m/13.5			18.7	24.9m/13.5			18.8	25.4m/13.5			24.0
26.0	18.3	13.5			18.4	13.5			18.5	13.5			26.0
28.0	17.7	13.4	28.3m/8.1		17.9	13.5	28.8m/8.1		18.1	13.5	29.4m/8.1		28.0
30.0	17.2	13.2	7.9		17.4	13.3	8.0		17.6	13.3	8.0		30.0
32.0	16.7	13.0	7.8	32.2m/4.3	16.9	13.0	7.8	32.7m/4.2	17.1	13.1	7.9	33.3m/4.3	32.0
34.0	16.2	12.8	7.6	4.2	16.4	12.9	7.7	4.2	16.6	12.9	7.7	4.3	34.0
36.0	15.8	12.4	7.5	4.2	16.0	12.5	7.5	4.2	16.2	12.7	7.6	4.2	36.0
38.0	15.4	12.0	7.4	4.1	15.6	12.2	7.4	4.1	15.8	12.4	7.5	4.1	38.0
40.0	15.0	11.7	7.2	4.0	15.2	11.9	7.3	4.0	15.3	12.0	7.3	4.0	40.0
42.0	14.6	11.4	7.1	3.9	14.3	11.6	7.2	3.9	14.0	11.7	7.2	4.0	42.0
44.0	13.5	11.1	7.0	3.9	13.2	11.3	7.1	3.9	12.9	11.4	7.1	3.9	44.0
46.0	12.4	10.9	6.9	3.8	12.2	11.0	7.0	3.8	11.9	11.2	7.0	3.8	46.0
48.0	11.5	10.6	6.8	3.7	11.3	10.8	6.9	3.7	11.0	10.9	6.9	3.8	48.0
50.0	10.7	10.4	6.7	3.7	10.4	10.6	6.8	3.7	10.1	10.7	6.8	3.7	50.0
52.0	9.9	10.2	6.6	3.6	9.6	10.4	6.7	3.6	9.3	10.2	6.7	3.7	52.0
54.0	9.2	10.0	6.5	3.6	8.9	9.8	6.6	3.6	8.6	9.5	6.6	3.6	54.0
56.0	8.5	9.3	6.5	3.5	8.3	9.1	6.5	3.5	7.9	8.8	6.6	3.5	56.0
58.0	7.9	8.7	6.4	3.4	7.6	8.4	6.4	3.5	7.3	8.2	6.5	3.5	58.0
60.0	7.3	8.1	6.3	3.4	7.1	7.8	6.4	3.4	6.7	7.6	6.4	3.5	60.0
62.0	6.8	7.5	6.3	3.4	6.5	7.3	6.3	3.4	6.2	7.0	6.3	3.4	62.0
64.0	6.3	7.0	6.2	3.4	6.0	6.8	6.2	3.4	5.7	6.5	6.3	3.4	64.0
66.0	5.8	6.5	6.1	3.3	5.6	6.3	6.2	3.3	5.3	6.0	6.2	3.4	66.0
68.0	5.4	6.0	6.1	3.3	5.1	5.8	6.1	3.3	4.8	5.5	6.1	3.3	68.0
70.0	69.6m/5.1	5.6	6.1	3.3	4.7	5.4	5.9	3.3	4.4	5.1	5.6	3.3	70.0
72.0		5.2	5.7	3.2	4.3	5.0	5.5	3.2	4.0	4.7	5.2	3.3	72.0
74.0		4.8	5.3	3.2	72.2m/4.3	4.6	5.1	3.2	3.7	4.3	4.8	3.3	74.0
76.0		75.7m/4.5	4.9	3.2		4.2	4.7	3.2	74.8m/3.5	3.9	4.4	3.2	76.0
78.0			4.6	3.2		3.9	4.3	3.2		3.6	4.1	3.2	78.0
80.0			4.2	3.1		78.3m/3.8	4.0	3.2		3.3	3.7	3.2	80.0
82.0			81.8m/3.9	3.0			3.7	3.2		80.9m/3.1	3.4	3.2	82.0
84.0				2.9			3.4	3.1			3.1	3.2	84.0
86.0				2.9			84.4m/3.3	3.0			2.8	3.0	86.0
88.0				87.8m/2.8				2.9			87.0m/2.6	2.8	88.0
90.0								2.8				2.7	90.0
92.0								90.5m/2.7				2.4	92.0
94.0												93.1m/2.2	94.0
Reeves	2	1	1	1	2	1	1	1	2	1	1	1	Reeves

Note: Ratings according to EN13000.

Ratings shown in are determined by the strength of the boom or other structural components.

01773 521414

www.johnsonplant.co.uk/hire

G.H. JOHNSON CRANE HIRE LTD.

G.H. JOHNSON CRANE HIRE LTD.

www.johnsonplant.co.uk/hire

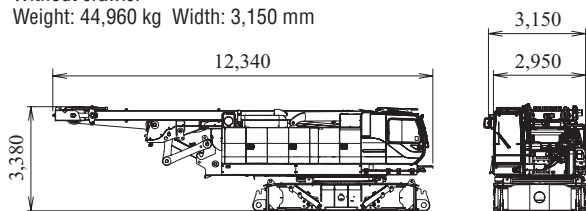
01773 521414

Fixed Jib Lifting Capacities (Without Main Hook Block)
Jib Offset Angle : 30°
 Counterweight: 90.4 t
 Carbody Weight: 27.5 t
 Unit: metric ton

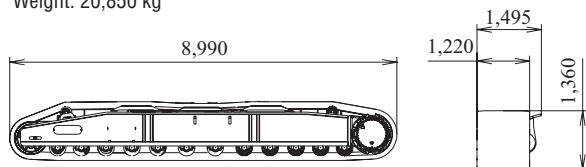
Boom length (m)	73.2				76.2				Boom length (m)
Jib Length (m)	12.2	18.3	24.4	30.5	12.2	18.3	24.4	30.5	Jib Length (m)
22.0	22.0m/19.1				22.6m/19.1				22.0
24.0	18.8				18.9				24.0
26.0	18.6	26.0m/13.5			18.7	26.5m/13.5			26.0
28.0	18.3	13.5	29.9m/8.1		18.4	13.5			28.0
30.0	17.8	13.4	8.0		18.0	13.4	30.4m/8.0		30.0
32.0	17.3	13.2	7.9	33.8m/4.3	17.5	13.2	7.9		32.0
34.0	16.8	13.0	7.8	4.3	17.0	13.1	7.8	34.3m/4.3	34.0
36.0	16.4	12.8	7.6	4.2	16.6	12.9	7.7	4.2	36.0
38.0	16.0	12.5	7.5	4.1	16.2	12.7	7.5	4.2	38.0
40.0	15.1	12.2	7.4	4.1	14.9	12.3	7.4	4.1	40.0
42.0	13.9	11.9	7.3	4.0	13.6	12.0	7.3	4.0	42.0
44.0	12.8	11.6	7.2	3.9	12.5	11.7	7.2	3.9	44.0
46.0	11.7	11.3	7.1	3.8	11.5	11.5	7.1	3.9	46.0
48.0	10.8	11.1	7.0	3.8	10.5	11.2	7.0	3.8	48.0
50.0	10.0	10.9	6.9	3.7	9.7	10.6	6.9	3.8	50.0
52.0	9.2	10.1	6.8	3.7	8.9	9.8	6.8	3.7	52.0
54.0	8.5	9.3	6.7	3.6	8.2	9.1	6.7	3.7	54.0
56.0	7.8	8.6	6.6	3.6	7.5	8.4	6.7	3.6	56.0
58.0	7.2	8.0	6.5	3.5	6.9	7.7	6.6	3.5	58.0
60.0	6.6	7.4	6.5	3.5	6.3	7.1	6.5	3.5	60.0
62.0	6.1	6.9	6.4	3.4	5.8	6.6	6.4	3.5	62.0
64.0	5.6	6.3	6.3	3.4	5.3	6.1	6.4	3.4	64.0
66.0	5.1	5.8	6.3	3.4	4.8	5.6	6.1	3.4	66.0
68.0	4.7	5.4	5.9	3.3	4.3	5.1	5.7	3.3	68.0
70.0	4.2	5.0	5.5	3.3	3.9	4.7	5.2	3.3	70.0
72.0	3.8	4.5	5.1	3.3	3.5	4.3	4.8	3.3	72.0
74.0	3.4	4.2	4.7	3.3	3.2	3.9	4.4	3.3	74.0
76.0	3.1	3.8	4.3	3.2	2.8	3.5	4.0	3.3	76.0
78.0	77.5m/2.9	3.4	3.9	3.2	2.5	3.2	3.7	3.2	78.0
80.0		3.1	3.6	3.2	2.2	2.8	3.3	3.2	80.0
82.0		2.8	3.3	3.2	80.1m/2.2	2.5	3.0	3.2	82.0
84.0		83.6m/2.5	3.0	3.1		2.2	2.7	3.0	84.0
86.0			2.7	2.9		1.9	2.4	2.8	86.0
88.0			2.4	2.7		86.2m/1.9	2.1	2.6	88.0
90.0			89.7m/2.1	2.5			1.8	2.3	90.0
92.0				2.3			1.6	2.1	92.0
94.0				2.0			92.3m/1.5	1.8	94.0
96.0				95.8m/1.7				1.6	96.0
98.0								1.4	98.0
100.0								98.4m/1.3	100.0
Reeves	2	1	1	1	2	1	1	1	Reeves

Note: Ratings according to EN13000.
 Ratings shown in are determined by the strength of the boom or other structural components.

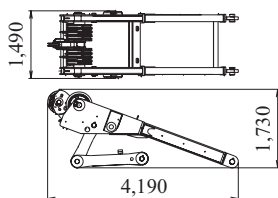
Base Machine
Gantry, Mast, Wire rope (Front/rear/boom hoist),
Without crawler
Weight: 44,960 kg Width: 3,150 mm



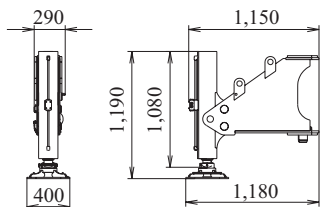
Crawler
Weight: 20,850 kg



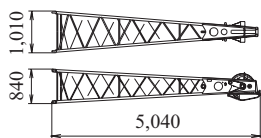
Gantry
Weight: 3,038 kg



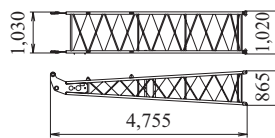
Translifter
Weight: 390 kg



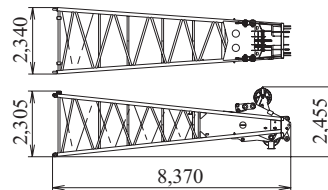
Jib Tip (For Crane)
Weight: 315 kg



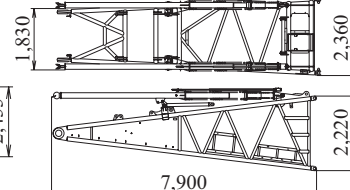
Jib Base (For Crane)
Weight: 210 kg



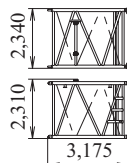
Boom Tip
Weight: 3,665 kg



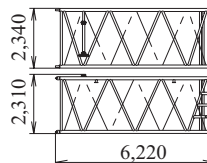
Boom Base
Weight: 4,665 kg



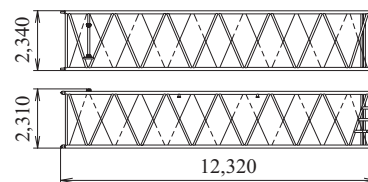
3.0 m (10 ft) Boom Insert (With Guy Line)
Weight: 890 kg



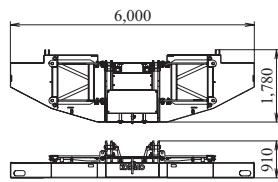
6.1 m (20 ft) Boom Insert (With Guy Line)
Weight: 1,440 kg



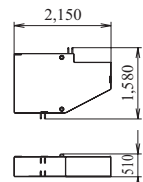
12.2 m (40 ft) Boom Insert (With Guy Line)
Weight: 2,540 kg



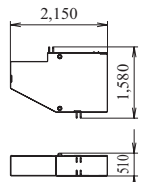
Counterweight (A) With Hanger
Weight: 15,540 kg



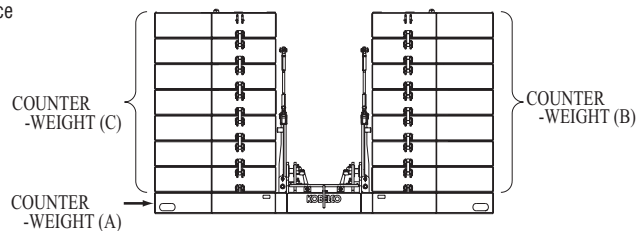
Counterweight (R)
3,5,7,9,11,13,15
Weight: 5,390 kg / 1 Piece



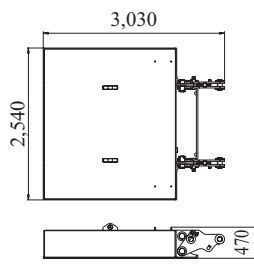
Counterweight (L)
2,4,6,8,10,12,14
Weight: 5,390 kg / 1 Piece



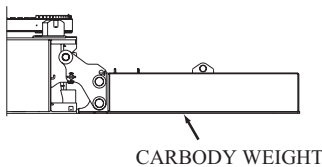
Counterweight assy



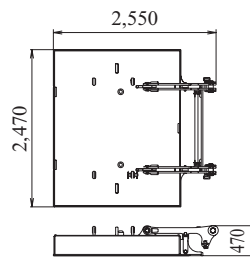
Carbody Weight (With Link)
Weight: 13,675 kg / 1 Piece



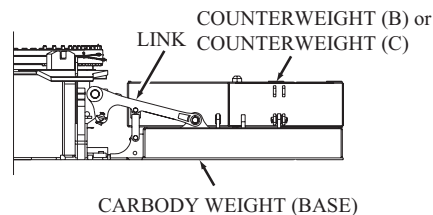
Carbody Weight assy



Carbody Weight (With Link) (Base) (Option)
Weight: 8,270 kg / 1 Piece

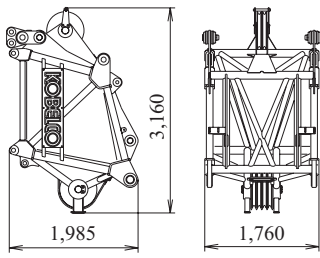


Carbody Weight assy (Option)



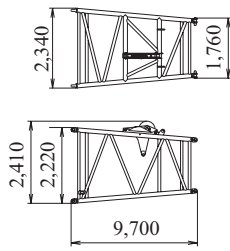
Luffing Boom Tip

Weight: 1,885 kg



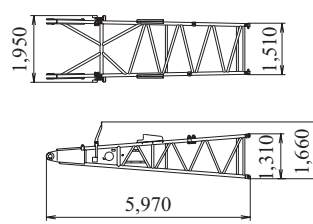
Luffing Taper Boom Insert

Weight: 1,030 kg



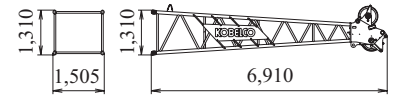
Luffing Jib Base

Weight: 1,140 kg



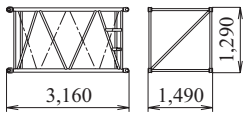
Luffing Jib Tip

Weight: 1,170 kg



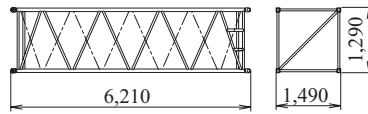
3.0 m (10 ft) Jib Insert

Weight: 310 kg



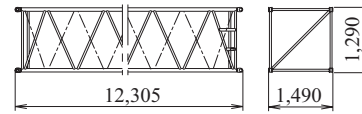
6.1 m (20 ft) Jib Insert

Weight: 540 kg



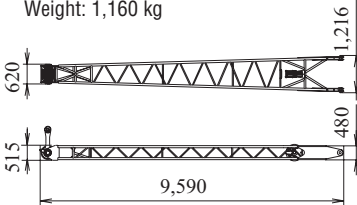
12.2 m (40 ft) Jib Insert

Weight: 960 kg



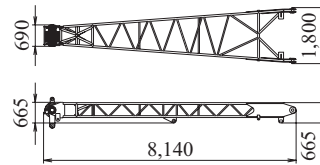
Front Strut (Luffing Jib)

Weight: 1,160 kg



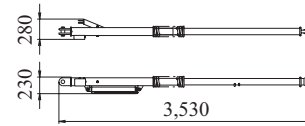
Rear strut (Luffing Jib)

Weight: 1,130 kg



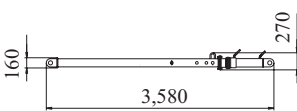
Luffing Jib Backstop

Weight: 180 kg



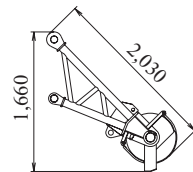
Strut Backstop (Luffing Jib)

Weight: 180 kg



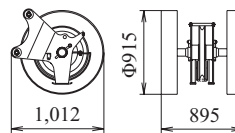
Aux. Sheave

Weight: 290 kg



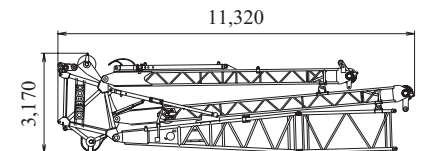
Aux. Sheave (For Luffing Jib)

Weight: 380 kg



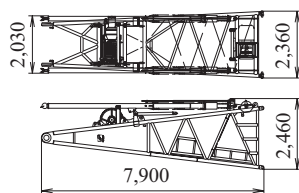
Luffing Boom Tip Assembly

Weight: 6,000 kg



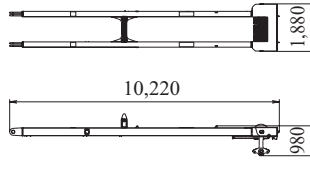
Boom base (With winch)

Weight: 6,810 kg



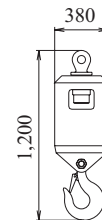
Mast

Weight: 3,320 kg



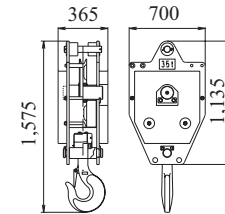
Ball Hook

Weight: 450 kg



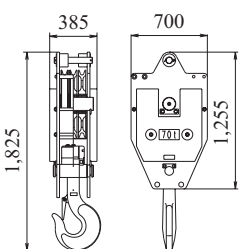
35 t Hook

Weight: 900 kg



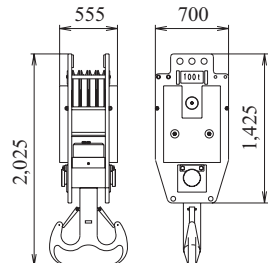
70 t Hook

Weight: 1,200 kg



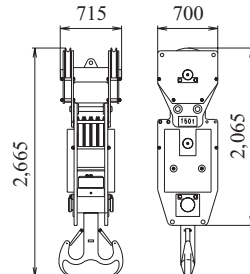
100 t Hook

Weight: 1,800 kg



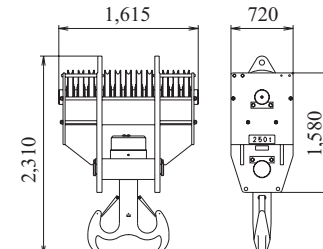
150 t Hook

Weight: 2,300 kg



250 t Hook

Weight: 4,200 kg





Note: This catalog may contain photographs of machines with specifications, attachments and optional equipment not certified for operation in your country. Please consult KOBELCO for those items you may require. Due to our policy of continual product improvements all designs and specifications are subject to change without advance notice.
Copyright by KOBELCO CRANES CO., LTD. No part of this catalog may be reproduced in any manner without notice.



KOBELCO CRANES CO., LTD.

17-1, Higashigotanda 2-chome, Shinagawa-ku, Tokyo 141-8626 JAPAN
Tel: +81-3-5789-2130 Fax: +81-3-5789-3372
URL: <http://www.kobelco-cranes.com/>

Inquiries To: