

Hydraulic Crawler Crane

CKE

1100G

Max. Lifting Capacity : **110 t x 3.6 m ***
 Max. Crane Boom Length : **70.1 m**
 Max. Fixed Jib Combination: **61.0 m + 21.3 m**

* Auxiliary sheave is necessary.



Model : CKE1100G

KOBELCO



Power Plant

Model: HINO J08E-UV

Type: 4 cycle, water-cooled, vertical in-line 6, direct injection, turbo-charger, intercooler

Complies with NRMM (Europe) Stage IIIB and US EPA Interim Tier 4

Displacement: 7,684 liters

Rated power: 213 kW/2,100 min⁻¹

Max. Torque: 1,017 N·m/1,600 min⁻¹

Cooling System: Water-cooled

Starter: 24V-5kW

Radiator: Corrugated type core, thermostatically controlled

Air cleaner: Dry type with replaceable paper element

Throttle: Twist grip type hand throttle, electrically actuated

Fuel filter: Replaceable paper element

Batteries: Two 12V x 136 Ah/5HR capacity batteries, series connected

Fuel tank capacity: 400 liters



Hydraulic System

Main pumps: 4 variable displacement piston pumps

Control: Full-flow hydraulic control system for infinitely variable pressure to all winches, propel and swing. Controls respond instantly to the touch, delivering smooth function operation.

Cooling: Oil-to-air heat exchanger (plate-fin type)

Filtration: Full-flow and bypass type with replaceable element

Max. relief valve pressure:

Load hoist, boom hoist and propel system: 31.9 MPa

Swing system: 27.5 MPa

Control system: 5.4 MPa

Hydraulic Tank Capacity: 535 liters



Boom Hoisting System

Powered by a hydraulic motor through a planetary reducer.

Brake: A spring-set, hydraulically released multiple-disc brake is mounted on the boom hoist motor and operated through a counter-balance valve.

Drum Lock: External ratchet for locking drum

Drum: Single drum, grooved for 20 mm dia. wire rope

Line Speed: Single line on first drum layer

Hoisting/Lowering: 48 to 2 m/min

Boom hoisting/lowering: 20mm x 155 m

Boom guy line: 34 mm

Boom backstops: Required for all boom length



Load Hoisting System

Front and rear drums for load hoist powered by a hydraulic variable plunger motors, driven through planetary reducers.

Negative Brake: A spring-set, hydraulically released multiple-

disc brake is mounted on the hoist motor and operated through a counter-balance valve. (Positive free fall brake is optional)

Drum Lock: External ratchet for locking drum

Drums:

Front Drums:

614 mm P.C.D x 617 mm wide drum, grooved for 26 mm wire rope. Rope capacity is 265 m working length and 360 m storage length.

Rear Drum: 614 mm P.C.D x 617 mm grooved for 26 mm wire rope. Rope capacity is 235 m working length and 360 m storage length.

Diameter of wire rope

Main winch: 26 mm x 265 m

Aux. winch: 26 mm x 235 m

Third winch: 26 mm x 190 m

Line Speed*:

Hoisting/lowering: 120 to 3 m/min

Line Pull:

Max. Line Pull*: 208 kN {21.2 tf}

(Referential performance)

Rated Line Pull: 108 kN {11.0 tf}

*Single line on first drum layer



Swing System

Swing unit is powered by hydraulic motor driving spur gears through planetary reducer, the swing system provides 360° rotation.

Swing parking brakes: A spring-set, hydraulically released multiple-disc brake is mounted on swing motor.

Swing circle: Single-row ball bearing with an integral internally cut swing gear.

Swing lock: Manually, four position lock for transportation

Swing Speed: 3.2 min⁻¹



Upper Structure

Torsion-free precision machined upper frame. All components are located clearly and service friendly. Engine will with low noise level.

Counter weight: 34.6 ton



Cab & Control

Totally enclosed, full vision cab with safety glass, fully adjustable, high backed seat with a headrest and armrests, and intermittent wiper and window washer (skylight and front window).

Cab fittings:

Air conditioner, convenient compartment (for tool), cup holder, cigarette lighter, sun visor, roof blind, tinted glass, floor mat, footrest, and shoe tray



Lower Structure

Steel-welded carbody with axles. Crawler assemblies can be hydraulically extended for wide-track operation or retracted for transportation. Crawler belt tension is maintained by hydraulic jack force on the track-adjusting bearing block.

Carbodyweight: 6.5 ton

Crawler drive: Independent hydraulic propel drive is built into each crawler side frame. Each drive consists of a hydraulic motor propelling a driving tumbler through a planetary gear box. Hydraulic motor and gear box are built into the crawler side frame within the shoe width.

Crawler brakes: Spring-set, hydraulically released parking brakes are built into each propel drive.

Steering mechanism: A hydraulic propel system provides both skid steering (driving one track only) and counter-rotating steering (driving each track in opposite directions).

Track rollers: Sealed track rollers for maintenance-free operation.

Shoe (flat): 900 mm wide each crawler

Max. gradeability: 40%



Weight

Including upper and lower machine, 34.6 ton counterweight and 6.5 ton carbody weight, basic boom (or basic boom + basic jib), hook, and other accessories.

Weight: 102 ton

Ground pressure: 95.4 kPa



Attachment

Boom & Jib:

Welded lattice construction using tubular, high-tensile steel chords with pin connection between sections.

Boom and Jib length

	Min. Length (Min. combination)	Max. Length (Max. combination)
Crane Boom	15.2 m	70.1 m
Fixed jib	27.4 m + 9.1 m	61.0 m + 21.3 m

Main Specifications (Model: CKE1100G)

Crane Boom	
Max. Lifting Capacity	110 t x 3.6 m *3
Max. Length	70.1 m
Fixed Jib	
Max. Lifting Capacity	10.9 t x 22.0 m
Max. Combination	61.0 m + 21.3 m
Main & Aux. Winch	
Max. Line Speed (1st layer)	120 m/min
Rated Line Pull (Single line)	108 kN {11.0 tf}
Wire Rope Diameter	26 mm
Wire Rope Length	265m (Main), 235 m (Aux.)
Brake Type (Free fall)	Wet-type multiple disc brake (Optional)
Working Speed	
Swing Speed	3.2 min ⁻¹ {rpm}
Travel Speed	1.4/1.0 km/h
Power Plant	
Model	HINO J08E-UV
Engine Output	213 kW/2,100min ⁻¹
Fuel Tank	400 liters

Hydraulic System	
Main Pumps	4 variable displacement
Max. Pressure	31.9 Mpa {325 kg/cm ² }
Hydraulic Tank Capacity	460 liters
Self-Removal Device	
	counterweight/crawler self-removal device
Weight	
Operating Weight	102 t *1
Ground Pressure	95.4 kPa
Counterweight	34,600 kg
Transport Weight	57,410 kg *2

Units are SI units. { } indicates conventional units.

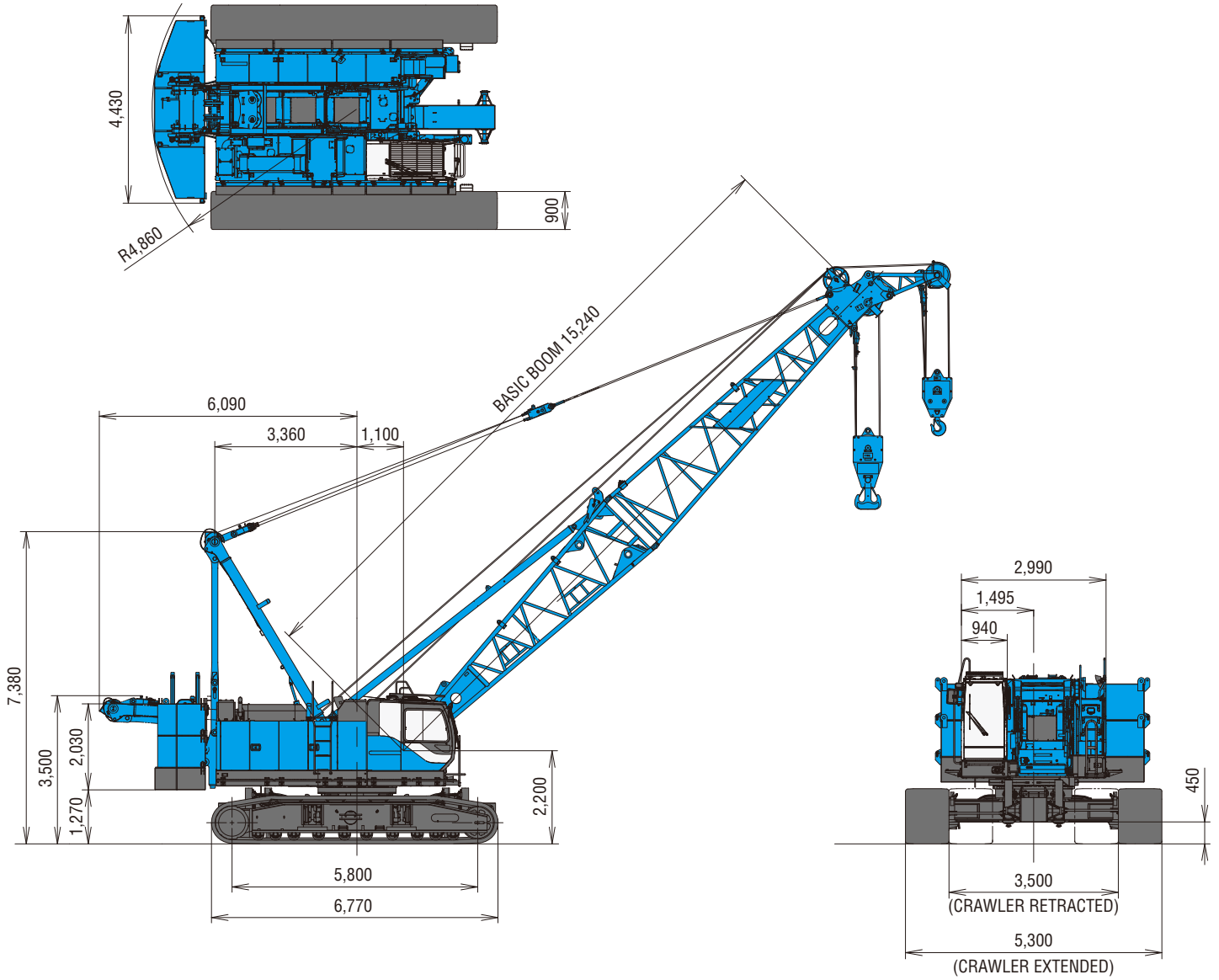
Line speeds in table are for light loads. Line speed varies with load.

*1 Including upper and lower machine, 34.6 ton counterweight, 6.5 ton carbody weight, basic boom, hook, and other accessories.

*2 Base machine with boom base, gantry, crawlers, and wire ropes (front/boom hoist)

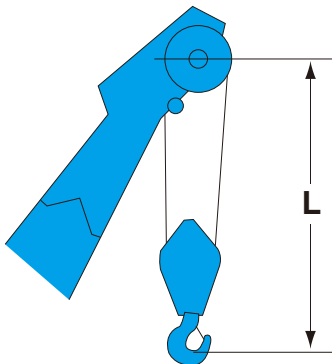
*3 Auxiliary sheave is must.

(Unit: mm)

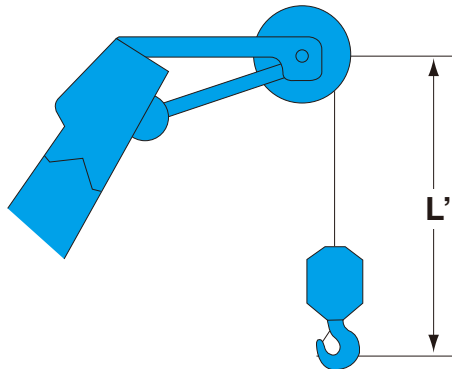


This catalog may contain photographs of machines with specifications, attachments and optional equipment.

Limit of Hook Lifting



Hook	L
110 t hook	4.2 m
70 t hook	4.1 m
35 t hook	3.9 m



Hook	L'
Ball hook	3.6 m
35 t hook	3.9 m

Crane Boom Arrangements

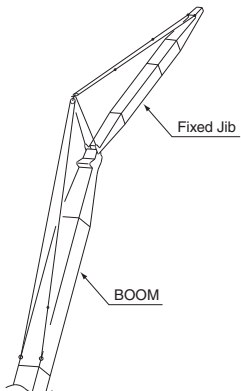
Boom length m (ft)	Boom arrangement
15.2 (50)	
18.3 (60)	※
21.3 (70)	※
24.4 (80)	※
27.4 (90)	※
30.5 (100)	※
33.5 (110)	※
36.6 (120)	※
39.6 (130)	※
42.7 (140)	※
45.7 (150)	※

Boom length m (ft)	Boom arrangement
48.8 (160)	※
51.8 (170)	※
54.9 (180)	※
57.9 (190)	※
61.0 (200)	※
64.0 (210)	※
67.1 (220)	※
70.1 (230)	※

Symbol	Boom Length	Remarks
	7.6 m	Boom Base
	7.6 m	Boom Top
	3.0 m	Insert Boom
	6.1 m	Insert Boom
	12.2 m	Insert Boom
	12.2 m	Insert Boom with lug

- ↙ mark shows the boom insert with lug attached and the guy line installing position when the fixed jib is used.
- ※ mark shows the standard boom arrangement which make the boom arrangement of less than the each boom length possible.
- mark shows the installing of the cable roller for the insert boom.

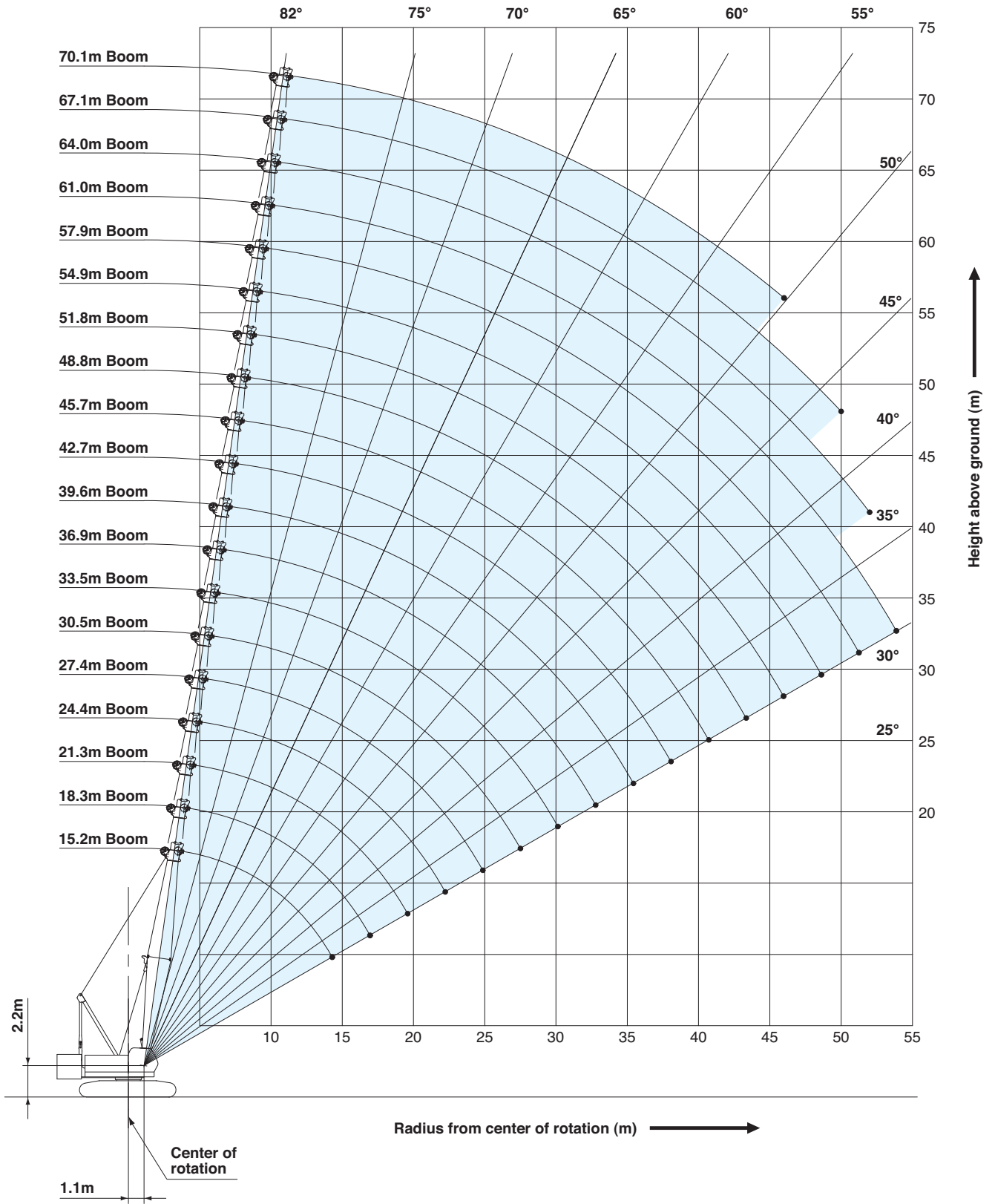
Fixed Jib Arrangements



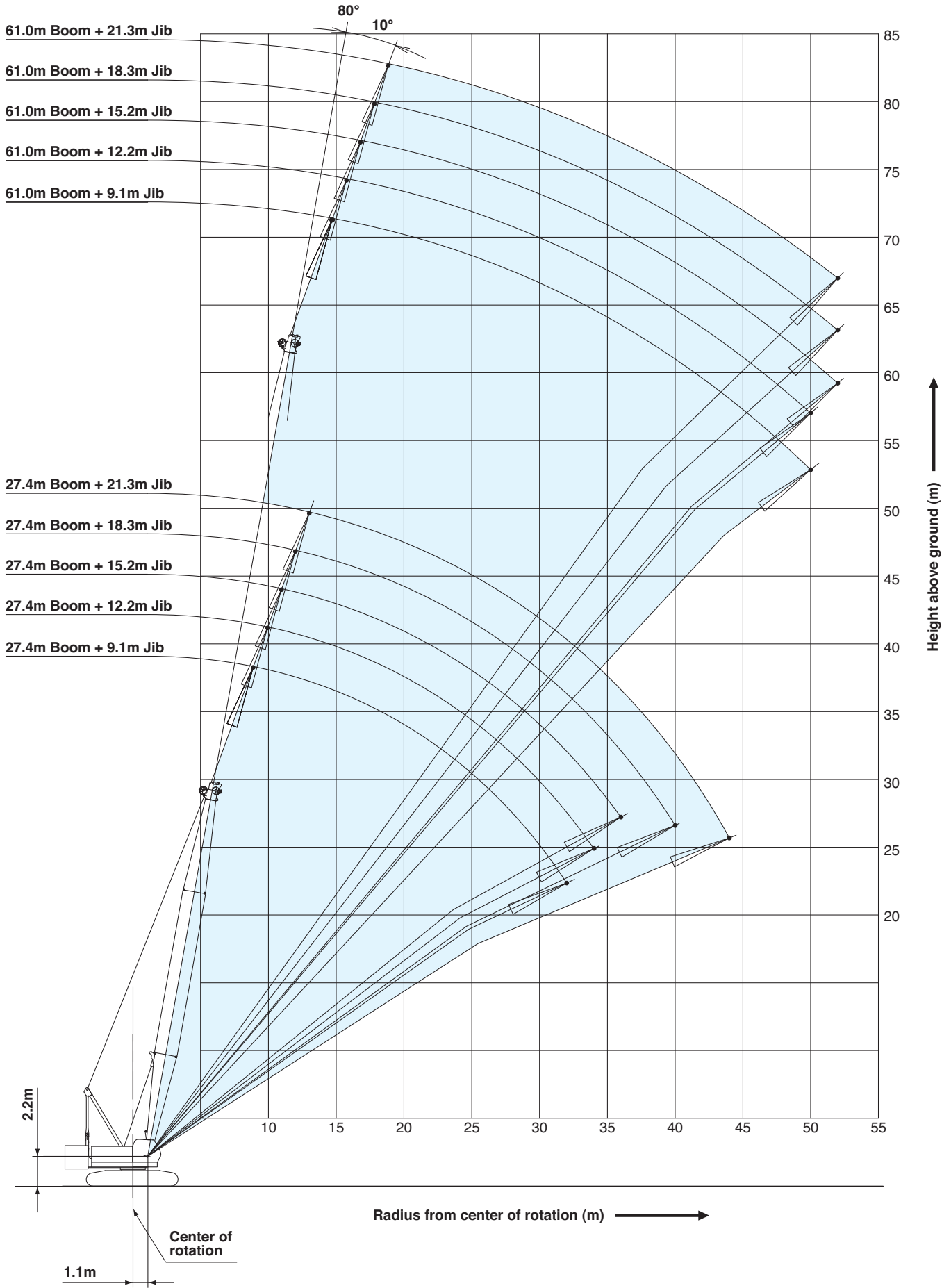
Crane boom length	Jib length m (ft)	Jib arrangement
27.4 m ~ 61.0 m	9.1 (30)	
	12.2 (40)	
	15.2 (50)	
	18.3 (60)	
	21.3 (70)	

Symbol	Jib Length	Remarks
	4.6 m	Jib Base
	4.6 m	Jib Top
	3.0 m	Insert Jib
	6.1 m	Insert Jib

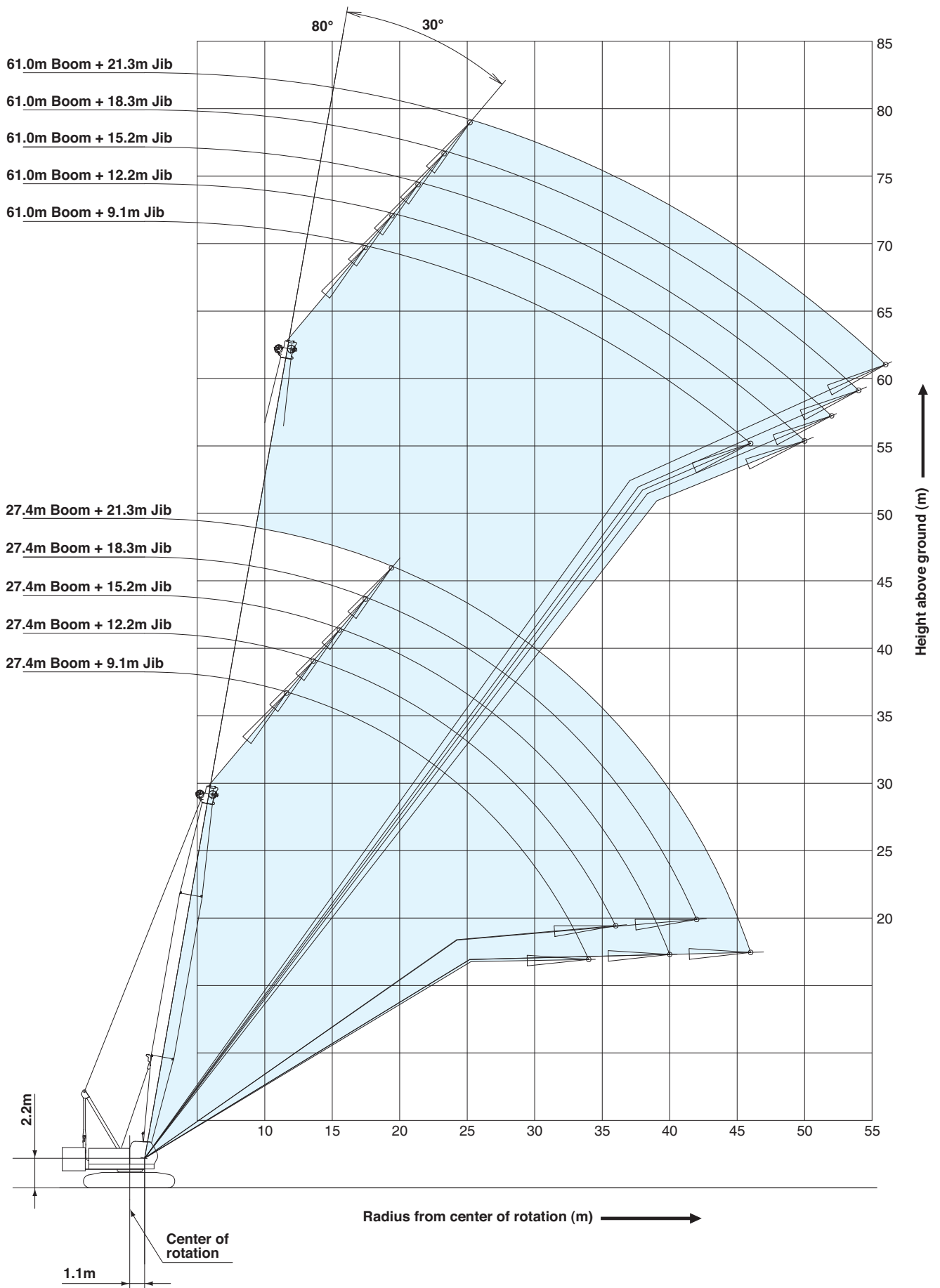
Crane Boom



Fixed Jib 10°



Fixed Jib 30°



01773 521414

www.johnsonplant.co.uk/hire

G.H. JOHNSON CRANE HIRE LTD.

G.H. JOHNSON CRANE HIRE LTD.

www.johnsonplant.co.uk/hire

01773 521414

- Ratings according to EN13000.
- Operating radius is the horizontal distance from centerline of rotation to a vertical line through the center of gravity of the load.
- Deduct weight of hook block (s), slings and all other load handling accessories from main boom ratings shown.
- Ratings shown are based on freely suspended loads and make no allowance for such factors as wind effect on lifted load, ground conditions, out-of-level, operating speeds or any other condition that could be detrimental to the safe operation of this equipment.
The operator, therefore, has the responsibility to judge the existing conditions and reduce lifted loads and operating speeds accordingly.
- Ratings are for operation on a firm and level surface, up to 1 % gradient.
- At radii and boom lengths where no ratings are shown on chart, operation is not intended nor approved.
- Boom inserts and guy lines must be arranged as shown in the "operator's manual".
- Boom hoist reeving is 10 part line.
- Gantry must be in raised position for all conditions.
- Boom backstops are required for all boom lengths.
- The boom should be erected over the front of the crawlers, not laterally.
- When erecting and lowering the boom of 70.1m and the combination of the boom of 61.0m and the jib of any length, place blocking steel plates between the ends of the crawlers and the ground.
- Ratings inside of boxes are limited by strength of materials.
- The minimum rated load is 1.5 (Ton).
- Crawler frames must be fully extended for all crane operations.

(Crane boom lifting)

- The total load that can be lifted is the value for weight of main hook block, slings, and all other load handling accessories deducted from crane boom ratings shown.

(Fixed jib lifting)

- The total load that can be lifted is the value for weight of jib hook block, slings, and all other load handling accessories deducted from fixed jib ratings shown.
- The availability of fixed jib mounting
 - On crane boom : Range 27.4 m to 61.0 m.

<Reference Information>

Main hoist loads

No. of Parts of Line	1	2	3	4	5
Maximum Loads (kN)	108	216	324	431	539
Maximum Loads (t)	11.0	22.0	33.0	44.0	55.0

No. of Parts of Line	6	7	8	9*	10*
Maximum Loads (kN)	647	755	863	971	1,079
Maximum Loads (t)	66.0	77.0	88.0	99.0	110.0

*Use auxiliary sheave

Auxiliary hoist loads

No. of Parts of Line	1	2
Maximum Loads (kN)	108	216
Maximum Loads (t)	11.0	22.0

Weight of hook block				
Hook Block	110 t	70 t	35 t	Ball Hook
Weight (t)	1.7	0.9	0.7	0.45

Operation of this equipment in excess of rated loads or disregard of instruction voids the warranty.

LIFTING CAPACITIES



Crane Boom Lifting Capacities

Counterweight: 34.6 t
Carbody Weight: 6.5 t

Unit: metric ton

Working radius (m) \ Boom Length (m)	15.2	18.3	21.3	24.4	27.4	30.5	33.5	36.6	39.6	42.7	Working radius (m) \ Boom Length (m)
3.5	3.6m/110.0										3.5
4.0	98.6	4.1m/95.3	4.6m/86.0								4.0
5.0	77.7	77.7	77.7	77.0	5.5m/66.0	5.9m/58.9					5.0
6.0	62.2	62.2	62.2	62.2	60.7	58.2	6.4m/52.4	6.8m/47.1			6.0
7.0	53.3	53.2	53.2	53.1	51.2	49.4	47.6	46.0	7.3m/42.7	7.8m/38.9	7.0
8.0	44.5	44.4	44.4	44.2	44.2	42.7	41.4	40.1	38.9	37.7	8.0
9.0	37.6	37.5	37.4	37.3	37.3	37.2	36.5	35.5	34.5	33.5	9.0
10.0	32.5	32.4	32.3	32.2	32.2	32.1	32.0	31.7	30.9	30.1	10.0
12.0	25.5	25.3	25.2	25.1	25.1	24.9	24.9	24.8	24.7	24.6	12.0
14.0	20.8	20.7	20.6	20.4	20.4	20.3	20.2	20.1	20.0	19.9	14.0
16.0	14.4m/20.1	17.4	17.3	17.1	17.1	16.9	16.9	16.7	16.7	16.6	16.0
18.0		17.1m/16.0	14.8	14.7	14.6	14.5	14.4	14.3	14.2	14.1	18.0
20.0			19.7m/13.2	12.8	12.7	12.6	12.5	12.4	12.3	12.2	20.0
22.0				11.3	11.2	11.1	11.0	10.8	10.8	10.6	22.0
24.0				22.4m/11.1	10.0	9.8	9.8	9.6	9.5	9.4	24.0
26.0					25.0m/9.5	8.8	8.7	8.6	8.5	8.4	26.0
28.0						27.6m/8.1	7.9	7.7	7.6	7.5	28.0
30.0							7.2	7.0	6.9	6.8	30.0
32.0							30.3m/7.1	6.4	6.3	6.1	32.0
34.0								32.9m/6.1	5.7	5.6	34.0
36.0									35.6m/5.3	5.1	36.0
38.0										4.7	38.0
40.0										38.2m/4.6	40.0
Reeves	10	9	8	7	6	6	5	5	4	4	Reeves

Working radius (m) \ Boom Length (m)	45.7	48.8	51.8	54.9	57.9	61.0	64.0	67.1	70.1	Working radius (m) \ Boom Length (m)
8.0	8.2m/35.6	8.7m/32.9								8.0
9.0	32.4	31.7	9.1m/30.4	9.6m/28.1						9.0
10.0	29.1	28.5	27.7	27.0	26.1	10.5m/22.0	10.9m/22.0	11.4m/19.1	11.9m/15.0	10.0
12.0	24.0	23.6	23.0	22.4	21.7	21.4	20.8	18.4	14.9	12.0
14.0	19.8	19.7	19.4	18.9	18.4	18.2	17.6	16.5	13.1	14.0
16.0	16.4	16.4	16.3	16.1	15.8	15.6	15.2	14.8	11.7	16.0
18.0	13.9	13.9	13.8	13.6	13.5	13.5	13.2	12.8	10.4	18.0
20.0	12.0	12.0	11.9	11.7	11.6	11.6	11.4	11.3	9.3	20.0
22.0	10.5	10.5	10.3	10.2	10.0	10.1	9.9	9.8	8.3	22.0
24.0	9.2	9.2	9.1	8.9	8.8	8.8	8.6	8.5	7.5	24.0
26.0	8.2	8.2	8.0	7.9	7.7	7.7	7.6	7.5	6.7	26.0
28.0	7.3	7.3	7.2	7.0	6.9	6.9	6.7	6.6	6.0	28.0
30.0	6.6	6.5	6.4	6.3	6.1	6.1	6.0	5.8	5.3	30.0
32.0	5.9	5.9	5.8	5.6	5.5	5.5	5.3	5.2	4.7	32.0
34.0	5.4	5.3	5.2	5.0	4.9	4.9	4.7	4.6	4.2	34.0
36.0	4.9	4.8	4.7	4.6	4.4	4.4	4.2	4.1	3.7	36.0
38.0	4.5	4.4	4.3	4.1	4.0	3.9	3.8	3.6	3.2	38.0
40.0	4.1	4.0	3.9	3.7	3.5	3.5	3.3	3.2	2.7	40.0
42.0	40.8m/4.0	3.7	3.5	3.3	3.2	3.1	2.9	2.8	2.3	42.0
44.0		43.5m/3.5	3.2	3.0	2.8	2.8	2.6	2.4	1.9	44.0
46.0			2.9	2.7	2.5	2.5	2.3	2.1	1.6	46.0
48.0			46.1m/2.9	2.4	2.2	2.2	2.0	1.8		48.0
50.0				48.8m/2.3	2.0	1.9	1.7	1.6		50.0
52.0					51.4m/1.8	1.7	1.5			52.0
54.0						1.5				54.0
Reeves	4	3	3	3	3	2	2	2	2	Reeves

Note:

Ratings according to EN13000.

Ratings shown in are determined by the strength of the boom or other structural components.

Lifting capacities may vary depending on hook used or with/without auxiliary sheave.

Please refer rated chart in operator's cabin.

Fixed Jib Lifting Capacities (Without Main Hook Block) (Jib Offset Angle : 10°)

Counterweight: 34.6 t
Carbody Weight: 6.5 t
Unit: metric ton

Boom length (m)	27.4					30.5					33.5					Boom length (m)
Jib length (m)	9.1	12.2	15.2	18.3	21.3	9.1	12.2	15.2	18.3	21.3	9.1	12.2	15.2	18.3	21.3	Jib length (m)
10.0	10.9					10.9										10.0
12.0	10.9	10.9	10.9			10.9	10.9	10.9			10.9	10.9				12.0
14.0	10.9	10.9	10.9	9.8	7.1	10.9	10.9	10.9	9.9	7.1	10.9	10.9	10.9	9.9		14.0
16.0	10.9	10.9	10.9	9.6	6.9	10.9	10.9	10.9	9.7	6.9	10.9	10.9	10.9	9.7	7.0	16.0
18.0	10.9	10.9	10.2	8.9	6.7	10.9	10.9	10.7	9.3	6.8	10.9	10.9	10.9	9.5	6.8	18.0
20.0	10.9	10.9	9.2	8.0	6.5	10.9	10.9	9.7	8.4	6.6	10.9	10.9	10.2	8.8	6.7	20.0
22.0	10.9	10.2	8.4	7.3	6.4	10.9	10.9	8.9	7.6	6.5	10.9	10.9	9.3	8.0	6.5	22.0
24.0	10.1	9.4	7.7	6.7	6.0	10.0	10.0	8.2	7.0	6.3	9.9	10.0	8.6	7.4	6.4	24.0
26.0	9.1	8.7	7.2	6.2	5.5	8.9	9.1	7.6	6.5	5.8	8.8	9.0	8.0	6.8	6.1	26.0
28.0	8.2	8.1	6.7	5.7	5.1	8.0	8.2	7.0	6.0	5.4	7.9	8.1	7.4	6.3	5.6	28.0
30.0	7.4	7.5	6.2	5.4	4.7	7.3	7.4	6.6	5.6	5.0	7.2	7.3	7.0	5.9	5.2	30.0
32.0	6.8	6.9	5.9	5.0	4.4	6.6	6.7	6.2	5.3	4.7	6.5	6.6	6.5	5.6	4.9	32.0
34.0		6.3	5.5	4.7	4.2	6.1	6.2	5.9	5.0	4.4	6.0	6.1	6.1	5.3	4.6	34.0
36.0			5.3	4.5	3.9		5.7	5.6	4.7	4.1	5.5	5.5	5.6	5.0	4.3	36.0
38.0				4.2	3.7			5.3	4.5	3.9	5.0	5.1	5.2	4.7	4.1	38.0
40.0				4.0	3.5			4.9	4.3	3.7		4.7	4.8	4.5	3.9	40.0
42.0					3.3				4.1	3.5			4.4	4.3	3.7	42.0
44.0					3.2				3.9	3.4			4.1	4.1	3.5	44.0
46.0										3.2					3.4	46.0
48.0															3.3	48.0
50.0															3.1	50.0
Reeves	1	1	1	1	1	1	1	1	1	1	1	1	1	1	1	Reeves

Boom length (m)	36.6					39.6					42.7					Boom length (m)
Jib length (m)	9.1	12.2	15.2	18.3	21.3	9.1	12.2	15.2	18.3	21.3	9.1	12.2	15.2	18.3	21.3	Jib length (m)
12.0	10.9	10.9				10.9					10.9					12.0
14.0	10.9	10.9	10.9	10.0		10.9	10.9	10.9			10.9	10.9	10.9			14.0
16.0	10.9	10.9	10.9	9.8	7.0	10.9	10.9	10.9	9.8	7.1	10.9	10.9	10.9	9.9	7.1	16.0
18.0	10.9	10.9	10.9	9.6	6.9	10.9	10.9	10.9	9.7	6.9	10.9	10.9	10.9	9.7	6.9	18.0
20.0	10.9	10.9	10.6	9.1	6.7	10.9	10.9	10.9	9.5	6.8	10.9	10.9	10.9	9.6	6.8	20.0
22.0	10.9	10.9	9.7	8.3	6.6	10.9	10.9	10.1	8.7	6.6	10.8	10.9	10.5	9.0	6.7	22.0
24.0	9.7	9.9	9.0	7.7	6.4	9.6	9.8	9.4	8.0	6.5	9.5	9.7	9.8	8.3	6.5	24.0
26.0	8.7	8.8	8.3	7.1	6.3	8.6	8.7	8.7	7.4	6.4	8.4	8.6	8.7	7.7	6.4	26.0
28.0	7.8	7.9	7.8	6.6	5.9	7.7	7.8	7.9	6.9	6.1	7.6	7.7	7.8	7.2	6.3	28.0
30.0	7.0	7.1	7.2	6.2	5.5	6.9	7.0	7.1	6.5	5.7	6.8	6.9	7.0	6.8	5.9	30.0
32.0	6.4	6.5	6.6	5.8	5.1	6.3	6.4	6.5	6.1	5.4	6.1	6.2	6.3	6.4	5.6	32.0
34.0	5.8	5.9	6.0	5.5	4.8	5.7	5.8	5.9	5.8	5.0	5.6	5.7	5.8	5.8	5.2	34.0
36.0	5.3	5.4	5.5	5.2	4.6	5.2	5.3	5.4	5.4	4.8	5.0	5.2	5.2	5.3	5.0	36.0
38.0	4.9	4.9	5.0	4.9	4.3	4.7	4.8	4.9	5.0	4.5	4.6	4.7	4.8	4.9	4.7	38.0
40.0	4.5	4.5	4.6	4.7	4.1	4.3	4.4	4.5	4.6	4.3	4.2	4.3	4.4	4.4	4.5	40.0
42.0		4.2	4.3	4.3	3.9	4.0	4.1	4.1	4.2	4.1	3.8	3.9	4.0	4.1	4.1	42.0
44.0			3.9	4.0	3.7		3.7	3.8	3.9	3.9	3.5	3.6	3.7	3.7	3.8	44.0
46.0				3.7	3.6			3.5	3.6	3.6		3.3	3.4	3.4	3.5	46.0
48.0				3.4	3.4			3.2	3.3	3.3		3.1	3.1	3.2	3.2	48.0
50.0					3.2				3.0	3.1			2.9	2.9	3.0	50.0
52.0										2.9				2.7	2.7	52.0
54.0										2.6				2.5	2.5	54.0
56.0															2.3	56.0
Reeves	1	1	1	1	1	1	1	1	1	1	1	1	1	1	1	Reeves

Note:
 Ratings according to EN13000.
 Ratings shown in are determined by the strength of the boom or other structural components.
 Lifting capacities may vary depending on hook used or with/without auxiliary sheave.
 Please refer rated chart in operator's cabin.

LIFTING CAPACITIES

01773 521414

www.johnsonplant.co.uk/hire

G.H. JOHNSON CRANE HIRE LTD.

G.H. JOHNSON CRANE HIRE LTD.


www.johnsonplant.co.uk/hire

01773 521414

Fixed Jib Lifting Capacities (Without Main Hook Block) (Jib Offset Angle : 10°)																Counterweight: 34.6 t Carbody Weight: 6.5 t	
																Unit: metric ton	
Boom length (m)	45.7					48.8					51.8					Boom length (m)	
Jib length (m)	9.1	12.2	15.2	18.3	21.3	9.1	12.2	15.2	18.3	21.3	9.1	12.2	15.2	18.3	21.3	Jib length (m)	
14.0	10.9	10.9				10.9	10.9				10.9					14.0	
16.0	10.9	10.9	10.9	9.9		10.9	10.9	10.9	10.0		10.9	10.9	10.9			16.0	
18.0	10.9	10.9	10.9	9.8	7.0	10.9	10.9	10.9	9.8	7.0	10.9	10.9	10.9	9.8	7.0	18.0	
20.0	10.9	10.9	10.9	9.6	6.8	10.9	10.9	10.9	9.6	6.9	10.9	10.9	10.9	9.7	6.9	20.0	
22.0	10.6	10.8	10.9	9.3	6.7	10.5	10.7	10.8	9.5	6.8	10.4	10.6	10.7	9.5	6.8	22.0	
24.0	9.3	9.5	9.6	8.6	6.6	9.3	9.4	9.5	8.9	6.6	9.1	9.3	9.4	9.2	6.7	24.0	
26.0	8.3	8.4	8.5	8.0	6.5	8.2	8.4	8.5	8.3	6.5	8.1	8.2	8.3	8.4	6.6	26.0	
28.0	7.4	7.5	7.6	7.5	6.4	7.3	7.4	7.6	7.6	6.4	7.2	7.3	7.4	7.5	6.5	28.0	
30.0	6.6	6.8	6.9	6.9	6.2	6.5	6.7	6.8	6.9	6.3	6.4	6.5	6.7	6.7	6.4	30.0	
32.0	6.0	6.1	6.2	6.3	5.8	5.9	6.0	6.1	6.2	6.0	5.7	5.9	6.0	6.1	6.1	32.0	
34.0	5.4	5.5	5.6	5.7	5.5	5.3	5.4	5.5	5.6	5.6	5.2	5.3	5.4	5.5	5.5	34.0	
36.0	4.9	5.0	5.1	5.2	5.2	4.8	4.9	5.0	5.1	5.1	4.7	4.8	4.9	4.9	5.0	36.0	
38.0	4.4	4.5	4.6	4.7	4.7	4.3	4.4	4.5	4.6	4.7	4.2	4.3	4.4	4.5	4.5	38.0	
40.0	4.0	4.1	4.2	4.3	4.3	3.9	4.0	4.1	4.2	4.2	3.8	3.9	4.0	4.1	4.1	40.0	
42.0	3.7	3.8	3.8	3.9	4.0	3.6	3.7	3.8	3.8	3.9	3.4	3.5	3.6	3.7	3.7	42.0	
44.0	3.3	3.4	3.5	3.6	3.6	3.2	3.3	3.4	3.5	3.5	3.1	3.2	3.3	3.4	3.4	44.0	
46.0	3.1	3.1	3.2	3.3	3.3	3.0	3.0	3.1	3.2	3.2	2.8	2.9	3.0	3.1	3.1	46.0	
48.0	2.8	2.9	2.9	3.0	3.1	2.7	2.8	2.8	2.9	3.0	2.5	2.6	2.7	2.8	2.8	48.0	
50.0		2.6	2.7	2.8	2.8	2.4	2.5	2.6	2.7	2.7	2.2	2.3	2.4	2.5	2.5	50.0	
52.0			2.4	2.5	2.6		2.2	2.3	2.4	2.4	1.9	2.0	2.1	2.2	2.2	52.0	
54.0				2.3	2.3			2.0	2.1	2.2		1.8	1.9	1.9	2.0	54.0	
56.0				2.0	2.1			1.8	1.9	1.9		1.5	1.6	1.7	1.8	56.0	
58.0					1.9				1.7	1.7						58.0	
60.0										1.5						60.0	
Reeves	1	1	1	1	1	1	1	1	1	1	1	1	1	1	1	Reeves	

Boom length (m)	54.9					57.9					61.0					Boom length (m)
Jib length (m)	9.1	12.2	15.2	18.3	21.3	9.1	12.2	15.2	18.3	21.3	9.1	12.2	15.2	18.3	21.3	Jib length (m)
14.0	10.9															14.0
16.0	10.9	10.9	10.9			10.9	10.9				10.9	10.9				16.0
18.0	10.9	10.9	10.9	9.9	7.1	10.9	10.9	10.9	9.9		10.9	10.9	10.9	9.9		18.0
20.0	10.9	10.9	10.9	9.7	6.9	10.9	10.9	10.9	9.8	7.0	10.9	10.8	10.8	9.8	7.0	20.0
22.0	10.3	10.5	10.6	9.6	6.8	10.1	10.3	10.5	9.6	6.8	10.1	10.3	10.4	9.7	6.9	22.0
24.0	9.0	9.2	9.3	9.4	6.7	8.9	9.0	9.2	9.3	6.7	8.8	9.0	9.1	9.2	6.8	24.0
26.0	7.9	8.1	8.2	8.3	6.6	7.8	8.0	8.1	8.2	6.6	7.7	7.9	8.0	8.1	6.7	26.0
28.0	7.0	7.2	7.3	7.4	6.5	6.9	7.0	7.2	7.3	6.5	6.8	7.0	7.1	7.2	6.6	28.0
30.0	6.3	6.4	6.5	6.6	6.4	6.1	6.3	6.4	6.5	6.4	6.1	6.2	6.3	6.4	6.5	30.0
32.0	5.6	5.7	5.8	5.9	6.0	5.4	5.6	5.7	5.8	5.8	5.4	5.5	5.6	5.7	5.8	32.0
34.0	5.0	5.1	5.2	5.3	5.4	4.9	5.0	5.1	5.2	5.2	4.8	4.9	5.0	5.1	5.2	34.0
36.0	4.5	4.6	4.7	4.8	4.9	4.4	4.5	4.6	4.7	4.7	4.3	4.4	4.5	4.6	4.6	36.0
38.0	4.1	4.2	4.3	4.3	4.4	3.9	4.0	4.1	4.2	4.3	3.8	3.9	4.0	4.1	4.2	38.0
40.0	3.6	3.8	3.9	3.9	4.0	3.5	3.6	3.7	3.8	3.8	3.4	3.5	3.6	3.7	3.8	40.0
42.0	3.3	3.4	3.5	3.6	3.6	3.1	3.2	3.3	3.4	3.5	3.0	3.1	3.3	3.3	3.4	42.0
44.0	2.9	3.1	3.1	3.2	3.3	2.7	2.9	3.0	3.1	3.1	2.6	2.7	2.9	3.0	3.0	44.0
46.0	2.6	2.7	2.8	2.9	3.0	2.4	2.5	2.6	2.7	2.8	2.2	2.4	2.5	2.6	2.7	46.0
48.0	2.2	2.4	2.5	2.6	2.6	2.0	2.2	2.3	2.4	2.4	1.9	2.1	2.2	2.3	2.3	48.0
50.0	2.0	2.1	2.2	2.3	2.3	1.7	1.9	2.0	2.1	2.1	1.6	1.8	1.9	2.0	2.0	50.0
52.0	1.7	1.8	1.9	2.0	2.1		1.6	1.7	1.8	1.8			1.6	1.7	1.7	52.0
54.0		1.6	1.7	1.7	1.8				1.5	1.6						54.0
56.0				1.5	1.6											56.0
Reeves	1	1	1	1	1	1	1	1	1	1	1	1	1	1	1	Reeves

Note:
 Ratings according to EN13000.
 Ratings shown in are determined by the strength of the boom or other structural components.
 Lifting capacities may vary depending on hook used or with/without auxiliary sheave.
 Please refer rated chart in operator's cabin.

 Fixed Jib Lifting Capacities (Without Main Hook Block) (Jib Offset Angle : 30°)																Counterweight: 34.6 t		Carbody Weight: 6.5 t	
																Unit: metric ton			
Boom length (m)	27.4					30.5					33.5					Boom length (m)			
Jib length (m)	9.1	12.2	15.2	18.3	21.3	9.1	12.2	15.2	18.3	21.3	9.1	12.2	15.2	18.3	21.3	Jib length (m)			
Working radius (m)	12.0	9.5														12.0			
	14.0	9.5	7.0			9.5					9.5					14.0			
	16.0	9.5	7.0	5.2		9.5	7.0				9.5	7.0				16.0			
	18.0	9.5	7.0	5.2	4.2	9.5	7.0	5.2			9.5	7.0	5.2			18.0			
	20.0	9.5	7.0	5.2	4.2	4.2	9.5	7.0	5.2	4.2	9.5	7.0	5.2	4.2		20.0			
	22.0	9.1	6.7	5.2	4.2	4.0	9.4	6.9	5.2	4.2	4.1	9.5	7.0	5.2	4.2	4.1	22.0		
	24.0	8.6	6.4	5.1	4.2	3.7	8.9	6.5	5.2	4.2	3.8	9.2	6.7	5.2	4.2	3.9	24.0		
	26.0	8.1	6.1	4.9	4.1	3.5	8.6	6.3	5.0	4.2	3.6	8.8	6.4	5.1	4.2	3.7	26.0		
	28.0	7.6	5.8	4.6	3.9	3.3	8.2	6.0	4.8	4.0	3.4	8.1	6.2	4.9	4.1	3.5	28.0		
	30.0	7.1	5.5	4.5	3.7	3.2	7.7	5.8	4.6	3.8	3.3	7.3	6.0	4.7	3.9	3.3	30.0		
	32.0	6.6	5.2	4.3	3.6	3.0	6.9	5.6	4.4	3.7	3.1	6.5	5.8	4.5	3.8	3.2	32.0		
	34.0	6.1	4.9	4.1	3.4	2.9	6.3	5.4	4.2	3.5	3.0	5.9	5.6	4.4	3.6	3.1	34.0		
	36.0		4.6	3.9	3.2	2.8	5.8	5.2	4.0	3.4	2.9	5.3	5.4	4.3	3.5	3.0	36.0		
	38.0			3.7	3.0	2.7		5.0	3.8	3.3	2.8	4.8	5.2	4.2	3.4	2.9	38.0		
	40.0			3.5	2.8	2.6			3.6	3.2	2.7		4.7	4.1	3.3	2.8	40.0		
	42.0				2.6	2.5			3.4	3.1	2.6		4.4	4.0	3.2	2.7	42.0		
	44.0					2.4				3.0	2.5			3.9	3.1	2.6	44.0		
	46.0					2.3				2.9	2.4				3.0	2.5	46.0		
	48.0										2.3				2.9	2.4	48.0		
	50.0															2.3	50.0		
	Reeves	1	1	1	1	1	1	1	1	1	1	1	1	1	1	1	Reeves		

Boom length (m)	36.6					39.6					42.7					Boom length (m)	
Jib length (m)	9.1	12.2	15.2	18.3	21.3	9.1	12.2	15.2	18.3	21.3	9.1	12.2	15.2	18.3	21.3	Jib length (m)	
Working radius (m)	14.0	9.5				9.5										14.0	
	16.0	9.5	7.0			9.5	7.0				9.5					16.0	
	18.0	9.5	7.0	5.2		9.5	7.0	5.2			9.5	7.0				18.0	
	20.0	9.5	7.0	5.2	4.2	9.5	7.0	5.2	4.2		9.5	7.0	5.2			20.0	
	22.0	9.5	7.0	5.2	4.2	4.2	9.5	7.0	5.2	4.2	4.2	9.5	7.0	5.2	4.2	22.0	
	24.0	9.5	6.9	5.2	4.2	4.0	9.5	7.0	5.2	4.2	4.0	9.5	7.0	5.2	4.2	4.1	24.0
	26.0	8.9	6.6	5.2	4.2	3.8	8.8	6.7	5.2	4.2	3.8	8.7	6.9	5.2	4.2	3.9	26.0
	28.0	8.0	6.3	5.0	4.2	3.6	7.9	6.5	5.1	4.2	3.6	7.8	6.6	5.2	4.2	3.7	28.0
	30.0	7.2	6.1	4.8	4.0	3.4	7.1	6.3	4.9	4.1	3.5	7.0	6.4	5.0	4.2	3.6	30.0
	32.0	6.5	5.9	4.7	3.8	3.3	6.4	6.1	4.8	3.9	3.3	6.3	6.2	4.9	4.0	3.4	32.0
	34.0	5.8	5.7	4.5	3.7	3.1	5.7	5.9	4.6	3.8	3.2	5.7	5.9	4.7	3.9	3.3	34.0
	36.0	5.3	5.5	4.4	3.6	3.0	5.2	5.4	4.5	3.7	3.1	5.2	5.3	4.6	3.7	3.2	36.0
	38.0	4.8	5.1	4.2	3.5	2.9	4.7	4.8	4.3	3.5	3.0	4.5	4.9	4.4	3.6	3.1	38.0
	40.0	4.4	4.6	4.0	3.4	2.8	4.2	4.4	4.1	3.4	2.9	4.0	4.2	4.3	3.5	3.0	40.0
	42.0	4.0	4.2	3.8	3.3	2.7	3.9	4.0	3.9	3.4	2.8	3.6	3.8	4.0	3.4	2.9	42.0
	44.0		3.9	3.6	3.2	2.7	3.5	3.6	3.7	3.3	2.7	3.3	3.4	3.6	3.3	2.8	44.0
	46.0			3.4	3.1	2.6		3.3	3.5	3.2	2.6	3.0	3.1	3.3	3.2	2.7	46.0
	48.0			3.2	3.0	2.5			3.2	3.1	2.5		2.8	3.0	3.1	2.6	48.0
	50.0				2.9	2.4			2.9	3.0	2.4		2.6	2.7	2.8	2.5	50.0
	52.0					2.3				2.7	2.3			2.5	2.5	2.4	52.0
	54.0					2.2				2.5	2.2				2.3	2.3	54.0
	56.0										2.1				2.1	2.2	56.0
	58.0										2.0					2.0	58.0
	60.0															1.8	60.0
	Reeves	1	1	1	1	1	1	1	1	1	1	1	1	1	1	1	Reeves

Note:
Ratings according to EN13000.
Ratings shown in are determined by the strength of the boom or other structural components.
Lifting capacities may vary depending on hook used or with/without auxiliary sheave.
Please refer rated chart in operator's cabin.

LIFTING CAPACITIES

01773 521414
www.johnsonplant.co.uk/hire
G.H. JOHNSON CRANE HIRE LTD.

G.H. JOHNSON CRANE HIRE LTD.
www.johnsonplant.co.uk/hire
01773 521414

Fixed Jib Lifting Capacities (Without Main Hook Block) (Jib Offset Angle : 30°)																Counterweight: 34.6 t Carbody Weight: 6.5 t
																Unit: metric ton
Boom length (m)	45.7					48.8					51.8					Boom length (m)
Jib length (m)	9.1	12.2	15.2	18.3	21.3	9.1	12.2	15.2	18.3	21.3	9.1	12.2	15.2	18.3	21.3	Jib length (m)
16.0	9.5					9.5					9.5					16.0
18.0	9.5	7.0				9.5	7.0				9.5	7.0				18.0
20.0	9.5	7.0	5.2			9.5	7.0	5.2			9.5	7.0	5.2			20.0
22.0	9.5	7.0	5.2	4.2		9.5	7.0	5.2	4.2		9.5	7.0	5.2	4.2		22.0
24.0	9.5	7.0	5.2	4.2	4.1	9.5	7.0	5.2	4.2	4.2	9.5	7.0	5.2	4.2	4.2	24.0
26.0	8.6	7.0	5.2	4.2	3.9	8.5	7.0	5.2	4.2	4.0	8.4	7.0	5.2	4.2	4.0	26.0
28.0	7.6	6.8	5.2	4.2	3.8	7.6	6.9	5.2	4.2	3.8	7.4	7.0	5.2	4.2	3.9	28.0
30.0	6.8	6.5	5.1	4.2	3.6	6.8	6.7	5.2	4.2	3.7	6.7	6.8	5.2	4.2	3.7	30.0
32.0	6.1	6.3	5.0	4.1	3.5	6.1	6.3	5.0	4.1	3.5	6.0	6.2	5.1	4.2	3.6	32.0
34.0	5.5	5.7	4.8	3.9	3.3	5.5	5.7	4.9	4.0	3.4	5.4	5.6	5.0	4.1	3.4	34.0
36.0	5.0	5.2	4.7	3.8	3.2	4.9	5.1	4.7	3.9	3.3	4.8	5.0	4.8	3.9	3.3	36.0
38.0	4.6	4.7	4.5	3.7	3.1	4.5	4.6	4.6	3.8	3.2	4.4	4.5	4.7	3.8	3.2	38.0
40.0	3.8	4.0	4.4	3.6	3.0	3.6	4.2	4.4	3.7	3.1	3.9	4.1	4.2	3.7	3.1	40.0
42.0	3.4	3.6	4.0	3.5	2.9	3.2	3.8	4.0	3.6	3.0	3.0	3.7	3.9	3.6	3.0	42.0
44.0	3.1	3.2	3.4	3.4	2.8	2.9	3.1	3.6	3.5	2.9	2.7	3.4	3.5	3.5	2.9	44.0
46.0	2.7	2.9	3.0	3.2	2.8	2.6	2.7	2.9	3.4	2.8	2.3	2.5	3.2	3.3	2.9	46.0
48.0	2.5	2.6	2.7	2.9	2.7	2.3	2.4	2.6	3.1	2.7	2.1	2.2	2.4	3.0	2.8	48.0
50.0	2.2	2.3	2.5	2.6	2.6	2.1	2.2	2.3	2.4	2.7	1.8	1.9	2.1	2.7	2.7	50.0
52.0		2.1	2.2	2.3	2.4	1.9	1.9	2.1	2.2	2.3	1.6	1.7	1.8	2.0	2.5	52.0
54.0			2.0	2.1	2.2		1.7	1.8	1.9	2.0		1.5	1.6	1.7	1.8	54.0
56.0			1.8	1.9	1.9			1.6	1.7	1.8				1.5	1.6	56.0
58.0				1.7	1.7			1.5	1.5	1.6						58.0
60.0					1.6											60.0
Reeves	1	1	1	1	1	1	1	1	1	1	1	1	1	1	1	Reeves

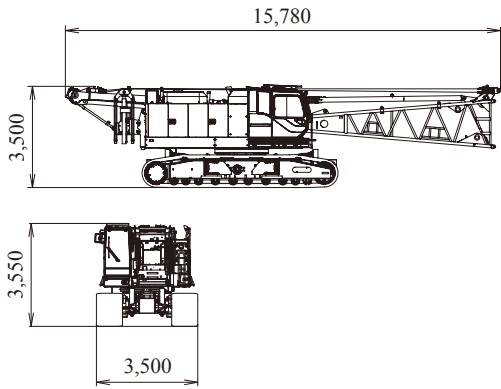
Boom length (m)	54.9					57.9					61.0					Boom length (m)
Jib length (m)	9.1	12.2	15.2	18.3	21.3	9.1	12.2	15.2	18.3	21.3	9.1	12.2	15.2	18.3	21.3	Jib length (m)
18.0	9.5					9.5					9.5					18.0
20.0	9.5	7.0				9.5	7.0				9.5	7.0				20.0
22.0	9.5	7.0	5.2			9.5	7.0	5.2			9.5	7.0	5.2			22.0
24.0	9.4	7.0	5.2	4.2		9.3	7.0	5.2	4.2		9.2	7.0	5.2	4.2		24.0
26.0	8.3	7.0	5.2	4.2	4.1	8.1	7.0	5.2	4.2	4.1	8.1	7.0	5.2	4.2	4.1	26.0
28.0	7.3	7.0	5.2	4.2	3.9	7.2	7.0	5.2	4.2	4.0	7.1	7.0	5.2	4.2	4.0	28.0
30.0	6.5	6.8	5.2	4.2	3.8	6.4	6.6	5.2	4.2	3.8	6.3	6.6	5.2	4.2	3.8	30.0
32.0	5.8	6.0	5.2	4.2	3.6	5.7	5.9	5.2	4.2	3.7	5.6	5.9	5.2	4.2	3.7	32.0
34.0	5.2	5.4	5.0	4.1	3.5	5.1	5.3	5.1	4.2	3.5	5.0	5.3	5.2	4.2	3.6	34.0
36.0	4.7	4.9	4.9	4.0	3.4	4.6	4.8	4.9	4.1	3.4	4.5	4.7	4.9	4.1	3.5	36.0
38.0	4.2	4.4	4.6	3.9	3.3	4.1	4.3	4.4	3.9	3.3	4.0	4.2	4.4	4.0	3.4	38.0
40.0	3.8	4.0	4.1	3.8	3.2	3.7	3.8	4.0	3.8	3.2	3.6	3.8	3.9	3.9	3.3	40.0
42.0	3.4	3.6	3.7	3.7	3.1	3.3	3.4	3.6	3.7	3.1	3.2	3.4	3.5	3.7	3.2	42.0
44.0	3.1	3.2	3.4	3.5	3.0	2.9	3.1	3.2	3.4	3.0	2.8	3.0	3.2	3.3	3.1	44.0
46.0	2.1	2.3	3.0	3.2	2.9	1.9	2.7	2.9	3.0	3.0	2.4	2.6	2.8	3.0	3.0	46.0
48.0	1.8	2.0	2.7	2.9	2.8	1.6	1.8	2.6	2.7	2.9		2.3	2.5	2.6	2.8	48.0
50.0	1.6	1.7	1.9	2.6	2.7		1.5	2.2	2.4	2.5		2.0	2.1	2.3	2.4	50.0
52.0		1.5	1.6	1.8	2.4				2.1	2.2			1.8	2.0	2.1	52.0
54.0				1.5	2.1					1.9				1.7	1.8	54.0
56.0										1.7					1.6	56.0
Reeves	1	1	1	1	1	1	1	1	1	1	1	1	1	1	1	Reeves

Note:
 Ratings according to EN13000.
 Ratings shown in are determined by the strength of the boom or other structural components.
 Lifting capacities may vary depending on hook used or with/without auxiliary sheave.
 Please refer rated chart in operator's cabin.

PARTS AND ATTACHMENTS

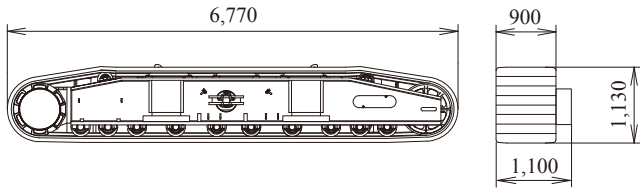
Base Machine

Boom base, Gantry, Crawler, Wire rope (Front/rear/boom hoist)
Weight: 57,410 kg Width: 3,500 mm



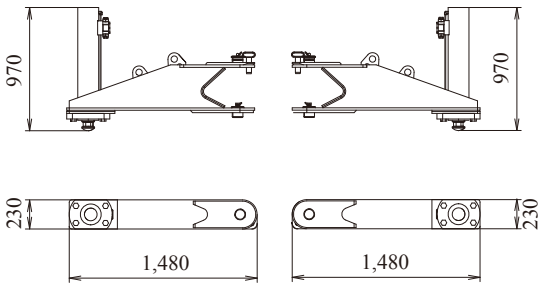
Crawler

Weight: 11,930 kg



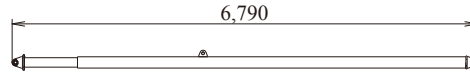
Translifter

Weight: 320 kg / 1 piece



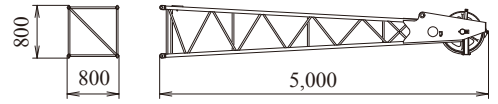
Backstop

Weight: 440 kg



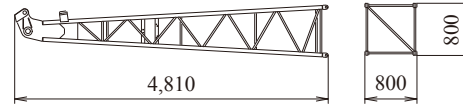
Jib Tip

Weight: 280 kg



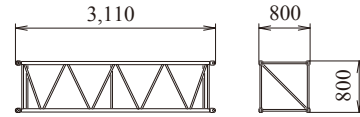
Jib Base

Weight: 200 kg



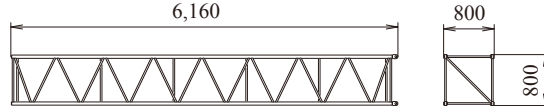
3.0 m Jib Insert

Weight: 100 kg



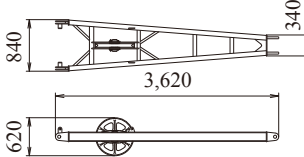
6.0 m Jib Insert

Weight: 180 kg



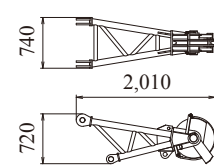
Strut

Weight: 250 kg



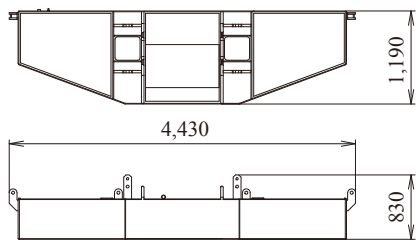
Auxiliary Sheave

Weight: 300 kg



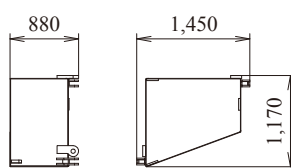
Counterweight No.1

Weight: 11,600 kg



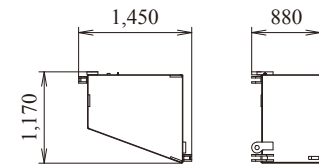
Counterweight No.3, No.5 (R)

Weight: 5,750 kg



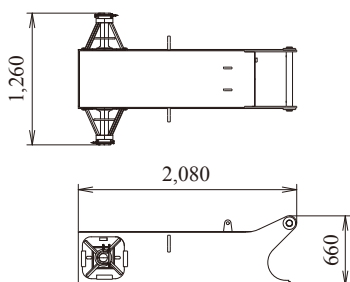
Counterweight No.2, No.4 (L)

Weight: 5,750 kg



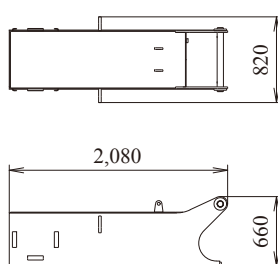
Carbody Weight (With float)

Weight: 3,320 kg / 1 piece



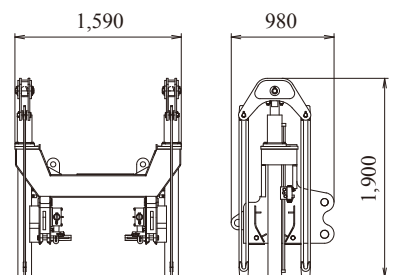
Carbody Weight (Without float)

Weight: 3,250 kg / 1 piece



Self Removal Unit

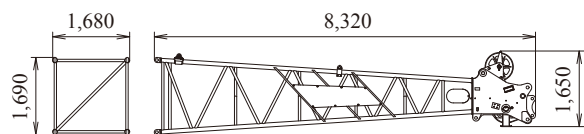
Weight: 870 kg



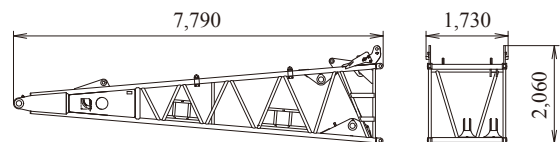
01773 521414
www.johnsonplant.co.uk/hire
G.H. JOHNSON CRANE HIRE LTD.

G.H. JOHNSON CRANE HIRE LTD.
www.johnsonplant.co.uk/hire
01773 521414

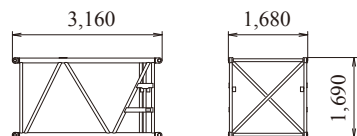
Boom Tip
Weight: 1,525 kg



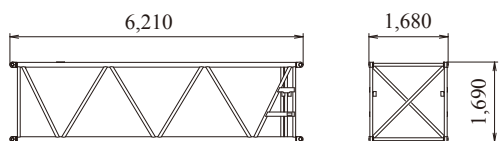
Boom Base
Weight: 2,235 kg



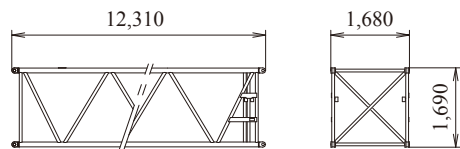
3.0 m Boom Insert
Weight: 380 kg



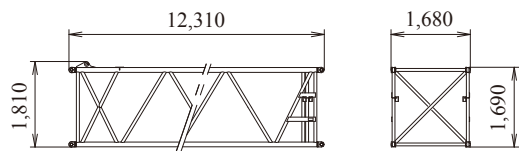
6.1 m Boom Insert
Weight: 655 kg



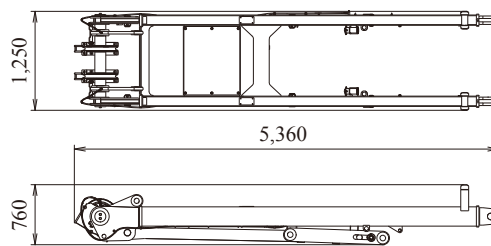
12.2 m Boom Insert
Weight: 1,195 kg



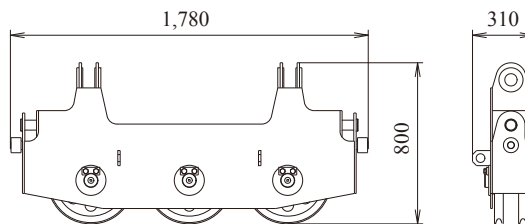
12.2 m Boom Insert (with Lug)
Weight: 1,220 kg



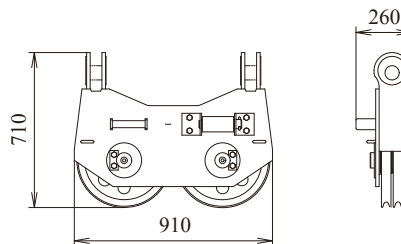
Gantry
Weight: 1,320 kg



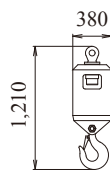
Upper Spreader
Weight: 300 kg



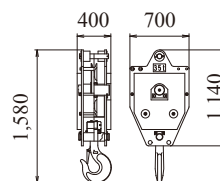
Lower Spreader
Weight: 200 kg



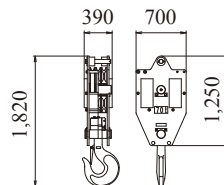
Ball Hook
Weight: 450 kg



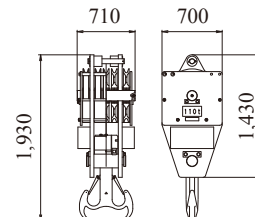
35 t Hook
Weight: 700 kg



70 t Hook
Weight: 900 kg



110 t Hook
Weight: 1,700 kg



Note: This catalog may contain photographs of machines with specifications, attachments and optional equipment not certified for operation in your country. Please consult KOBELCO for those items you may require. Due to our policy of continual product improvements all designs and specifications are subject to change without advance notice.

Copyright by KOBELCO CRANES CO., LTD. No part of this catalog may be reproduced in any manner without notice.



KOBELCO CRANES CO., LTD.

17-1, Higashigotanda 2-chome, Shinagawa-ku, Tokyo 141-8626 JAPAN

Tel: +81-3-5789-2130 Fax: +81-3-5789-3372

URL: <http://www.kobelco-cranes.com/>

Inquiries To: