

G. H. JOHNSON CRANE HIRE LTD.

Lydford Road, Meadow Lane Industrial Estate, Alfreton, Derbyshire. DE55 7RQ



(01773) 521414

(01773) 830336

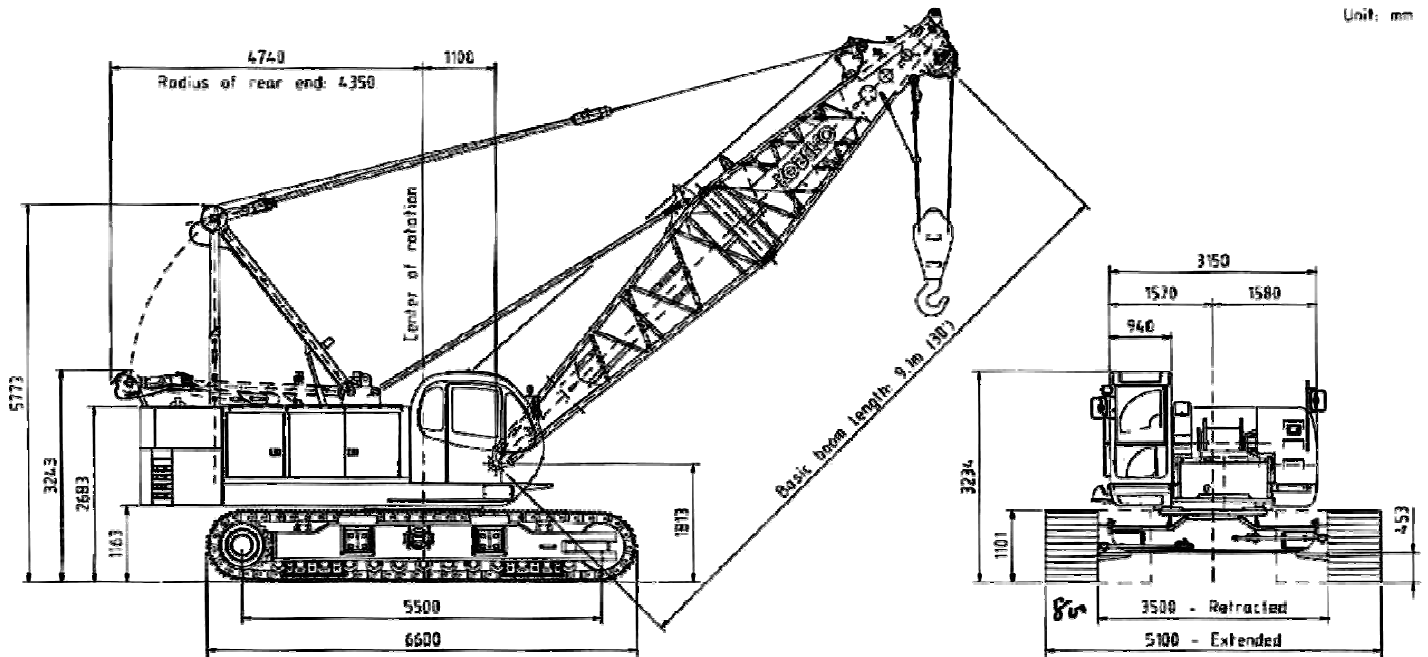
hire@johnsonplant.co.uk



KOBELCO

BM 700 C

Machine Dimensions :



● Performance

Travel Speed	*1.75 km/h (1.1 MPH)
Swing Speed	*3.5 min ⁻¹ (3.5 RPM)
Gradeability	40% (Approx. 22°)

● Engine

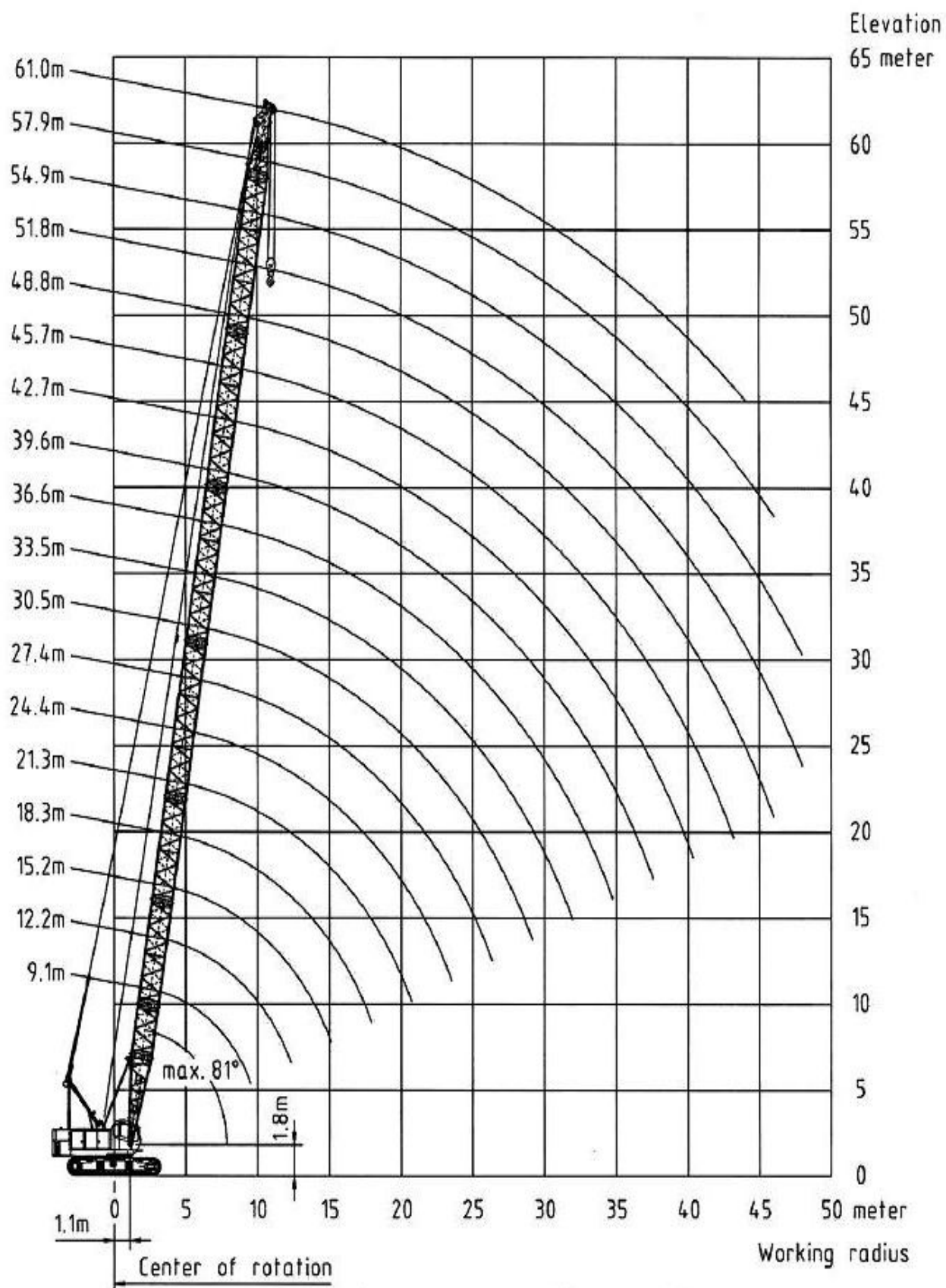
Make	MTSUBISHI LTD.
Model	6D22-T
Type	4-cycle, water-cooled, direct injection with turbocharger.
Rated Output	170kW @ 1800 min ⁻¹ (230PS @ 1800 RPM)
Total Piston Displacement	11.15 Litres
Fuel Tank Capacity	360 Litres
Battery	12V×170AH×2pcs.

● Crane Specifications

Max. lifting capacity × working radius	80 Tonnes × 3.5 metres	
Max. boom length	61 metres	
Max. boom length, with fly jib	70.1 metres (51.8m + 18.3m)	
Rope Speed	Main drum hoist/lowering	*100/70~50/35 m/min
	Aux. drum hoist/lowering	*100/70~50/35 m/min
	Boom drum hoist/lowering	*65m/min
Part Lines	80 Tonne Hook Block	10 Part Line
	6.6 Tonne Hook Block	Single Line
	Boom drum hoist/lowering	12 Part Line
Total operating weight	69.6 Tonnes (Approx.)	
Counterweight	20.55 Tonnes	
Average ground bearing pressure	0.74 kg/cm ² (Approx.)	

*Speed will vary depending on the load.

Working Ranges Main Boom



Main boom 9.1m ... 61.0m

Rated Load Chart (Tonnes) :

Working Radius (m)	Boom Length (m)														
	9.1	12.2	15.2	18.3	21.3	24.4	27.4	30.5	33.5	36.6	39.6	42.7	45.7	48.8	51.8
3.5	80.0	80.0													
4.0	78.1	77.9	77.6												
4.5	69.9	69.7	66.1	61.9											
5.0	63.2	61.1	57.5	54.2	51.3										
5.5	57.2	53.7	50.8	48.2	45.8	43.7									
6.0	49.4	47.9	45.5	43.3	41.4	39.6	37.9								
6.5	43.4	43.3	41.2	39.4	37.7	36.1	34.7	33.4							
7.0	38.7	38.6	37.6	36.0	34.5	33.2	32.0	30.8	29.7						
7.5	34.9	34.7	34.6	33.2	31.9	30.7	29.6	28.6	27.6	26.7					
8.0	31.7	31.6	31.5	30.7	29.6	28.5	27.6	26.7	25.7	24.9	24.1				
9.0	26.1	26.6	26.6	26.4	25.8	25.0	24.2	23.4	22.6	22.0	21.3	20.7	20.0		
10.0		23.0	22.9	22.8	22.7	22.1	21.4	20.8	20.2	19.6	19.0	18.5	17.9	17.4	16.8
11.0		20.2	20.1	20.0	19.8	19.8	19.2	18.7	18.1	17.6	17.1	16.7	16.2	15.7	15.2
12.0			17.9	17.7	17.6	17.5	17.4	16.9	16.4	16.0	15.5	15.1	14.7	14.2	13.8
13.0			16.1	15.9	15.8	15.7	15.6	15.4	15.0	14.6	14.1	13.8	13.4	13.0	12.6
14.0			14.6	14.4	14.3	14.2	14.0	14.0	13.7	13.4	13.0	12.7	12.3	11.9	11.5
15.0				13.1	13.0	12.9	12.8	12.7	12.6	12.3	11.9	11.7	11.3	11.0	10.6
16.0				12.1	11.9	11.8	11.7	11.6	11.5	11.4	11.0	10.8	10.4	10.1	9.8
18.0					10.2	10.0	9.9	9.8	9.7	9.6	9.5	9.3	9.0	8.7	8.4
20.0						8.7	8.5	8.4	8.3	8.2	8.1	8.0	7.8	7.6	7.3
22.0						7.6	7.5	7.4	7.2	7.1	7.0	6.9	6.8	6.6	6.4
24.0							6.6	6.5	6.3	6.2	6.1	6.0	5.9	5.7	5.6
26.0								5.8	5.6	5.5	5.3	5.3	5.1	5.0	4.8
28.0									5.0	4.9	4.7	4.6	4.5	4.3	4.2
30.0										4.5	4.3	4.2	4.1	4.0	3.7
32.0											3.9	3.7	3.6	3.5	3.2
34.0												3.3	3.2	3.1	2.8
36.0													2.9	2.7	2.4
38.0														2.6	2.3
40.0															2.1
42.0															1.8
44.0															1.6
46.0															1.4

Notes :

- Above rated loads are in accordance with the requirements of DIN 15018/3 (ut, class B2, hoist class H1) & prEN13000 (1997). The machine must be operated on firm level ground. Rated loads are the value at any point 360° around the machine.
- Ratings shown in are determined by the strength of the boom or other structural components.
- Crawler frame and "A" frame must both be extended before working.
- Working radius is horizontal distance from centre of rotation to a vertical line through the centreline of gravity of the load.
- The weight of the hook block and other lifting devices must be considered to be a part of the load.

80 tonne hook block...800kg	45 tonne hook block...700kg
45 tonne hook block...500kg	32 tonne hook block...500kg
19 tonne hook block...400kg	6.6 tonne ball hook ... 160kg

- Auxiliary Sheave or Fly Jib can be fitted to main boom in the following combinations :

Fly Jib Length (metres)	Aux Sheave	12.2m	18.3m
Main Boom Length (metres)	9.1m ~ 61.0m	30.5m ~ 51.8m	30.5m ~ 51.8m

- Auxiliary Sheave & Fly Jib duty charts available upon request.