



G. H. JOHNSON CRANE HIRE LTD.

8 Lydford Road, Meadow Lane Industrial Estate, Alfreton, Derbyshire. DE55 7RQ



(01773) 521414

(01773) 830336

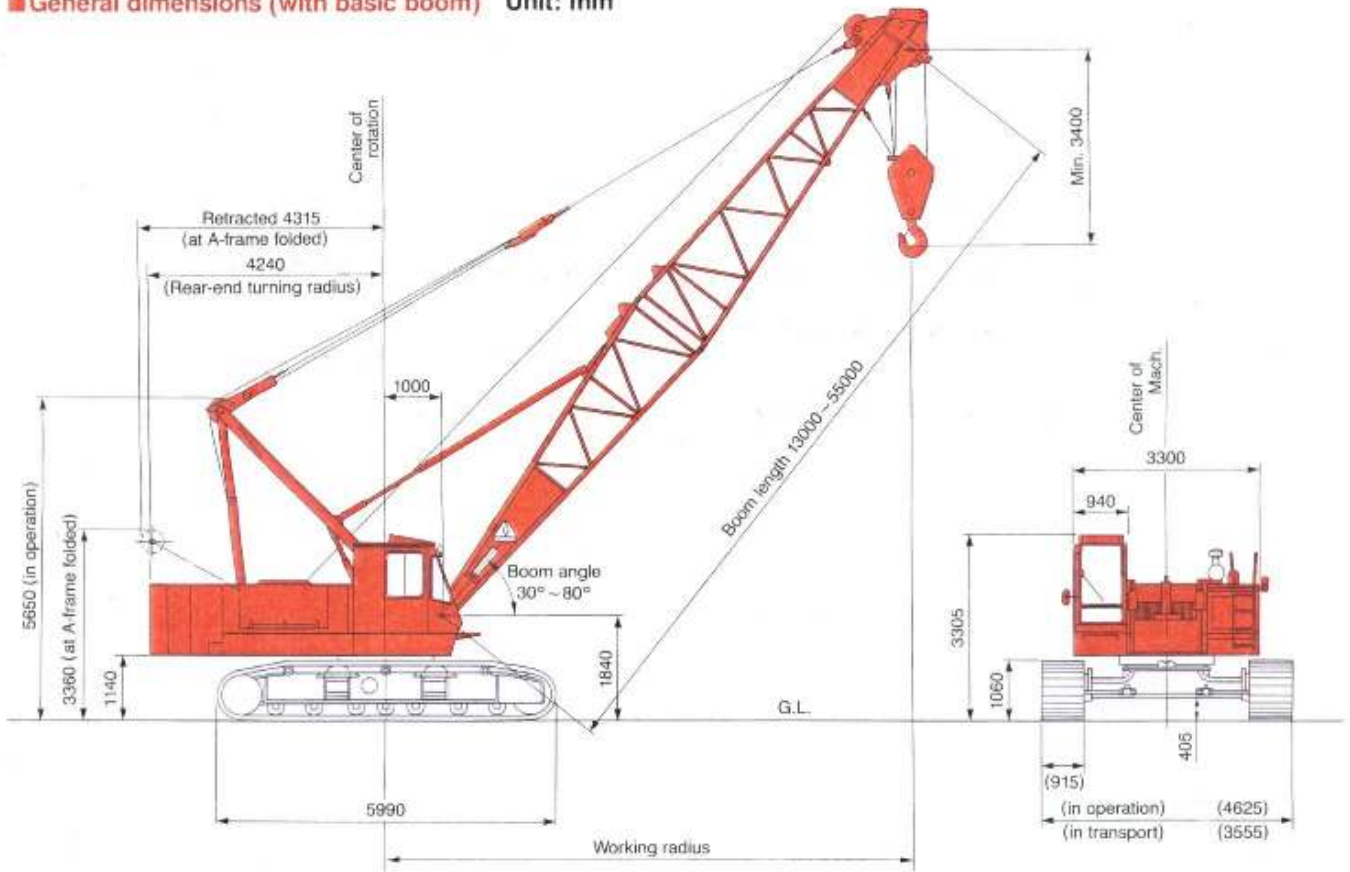
hire@johnsonplant.co.uk



DCH800

IHI CONSTRUCTION MACHINERY LIMITED

■ General dimensions (with basic boom) Unit: mm



● Performance

Travel Speed	*1.5 km/h (0.9 MPH)
Swing Speed	*3.0 min ⁻¹ (3.0 RPM)
Gradeability	40% (Approx. 22°)

● Engine

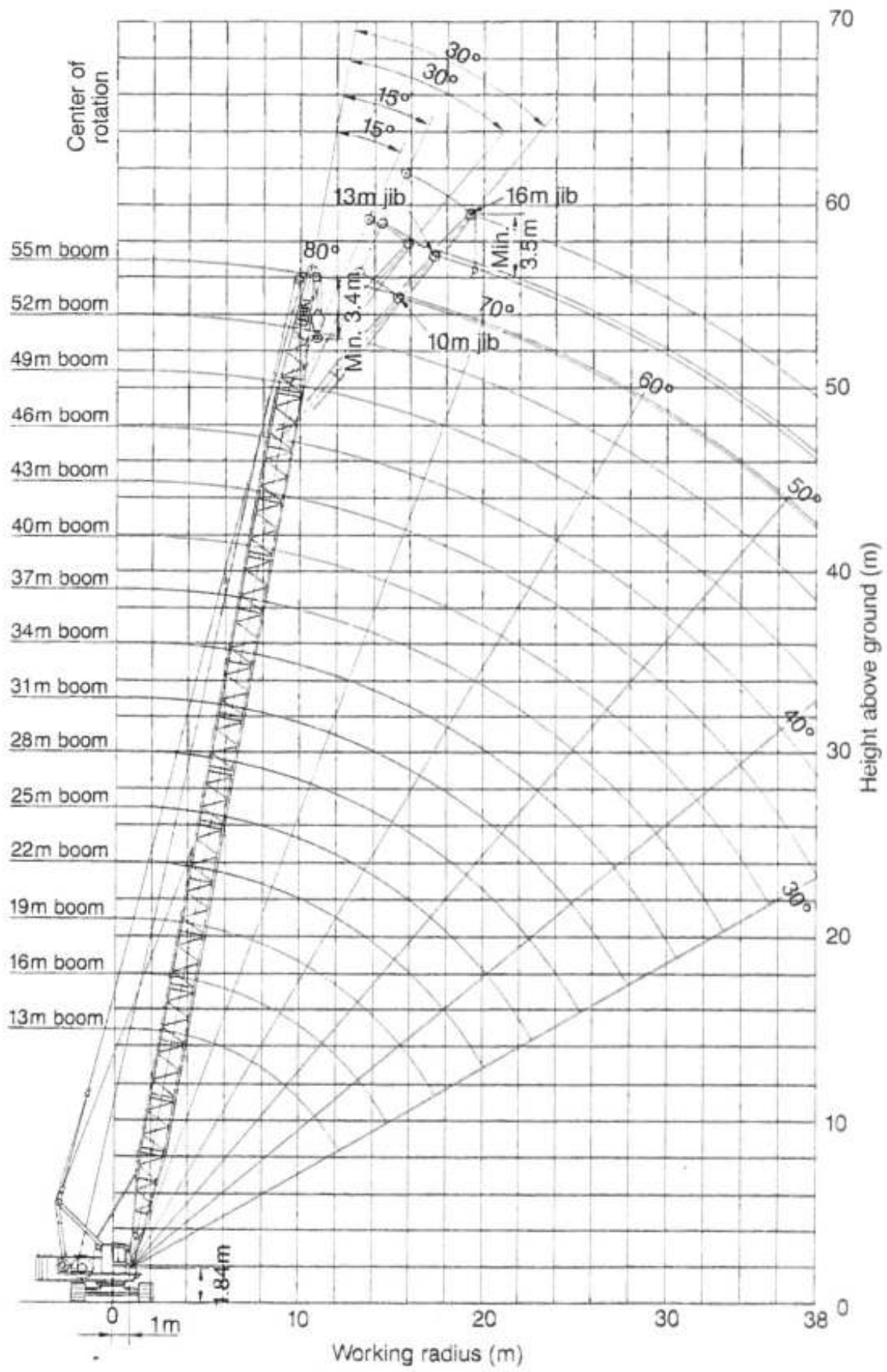
Make	HINO MOTORS LTD.
Model	EP100T
Type	4-cycle, water-cooled, OHV, direct fuel injection.
Rated Output	169kW @ 2100 min ⁻¹ (230PS @ 2100 RPM)
Total Piston Displacement	8.821 Litres
Fuel Tank Capacity	350 Litres
Battery	12V×150AH×2pcs.

● Crane Specifications

Max. lifting capacity × working radius		80 Tonnes × 3.7 metres
Max. boom length		55 metres
Max. boom length, with fly jib		62 metres (46m + 16m)
Rope Speed	Main drum hoist/lowering	*70 / 35 m/min
	Aux. drum hoist/lowering	*70 / 35 m/min
	Boom drum hoist/lowering	*68 m/min
Part Lines	80 Tonne Hook Block	8 Part Line
	10 Tonne Hook Block	Single Line
	Boom drum hoist/lowering	12 Part Line
Total operating weight (13 m Boom)		75.4 Tonnes (Approx.)
Counterweight		23.0 Tonnes
Average ground bearing pressure		85.3kPa (0.87kg/cm ²)

*Speed will vary depending on the load.

Working Range Diagram :



Rated Load Chart (Tonnes) :

Working Radius (m)	Boom Length (m)														
	13	16	19	22	25	28	31	34	37	40	43	46	49	52	55
3.7	80.0														
4.0	75.0														
4.5	70.5	64.0													
5.0	58.8	58.6	56.0												
5.5	50.3	50.2	50.1	50.0											
6.0	43.9	43.8	43.7	43.6	43.5										
7.0	35.0	34.8	34.7	34.6	34.5	34.4	34.3								
8.0	28.9	28.8	28.7	28.6	28.5	28.4	28.3	28.2	28.1						
9.0	24.6	24.5	24.4	24.3	24.2	24.1	24.0	23.9	23.8	23.7	23.5				
10.0	21.4	21.3	21.2	21.1	21.0	20.9	20.8	20.7	20.6	20.5	20.4	19.0	17.2		
12.0	16.8	16.7	16.6	16.5	16.4	16.3	16.2	16.1	16.0	15.9	15.8	15.7	14.9	12.7	
14.0		13.6	13.5	13.4	13.3	13.2	13.1	13.0	12.9	12.8	12.7	12.6	12.5	10.7	9.6
16.0			11.4	11.3	11.2	11.1	11.0	10.9	10.8	10.7	10.6	10.5	10.4	9.5	8.3
18.0				9.6	9.5	9.4	9.3	9.2	9.1	9.0	8.9	8.8	8.7	8.5	7.3
20.0				8.3	8.2	8.1	8.0	7.9	7.8	7.7	7.6	7.5	7.4	7.3	6.4
22.0					7.2	7.1	7.0	6.9	6.8	6.7	6.6	6.5	6.4	6.3	5.5
24.0						6.3	6.2	6.1	6.0	5.9	5.8	5.7	5.6	5.5	4.8
26.0							5.5	5.4	5.3	5.2	5.1	5.0	4.9	4.8	4.2
28.0								4.8	4.7	4.6	4.5	4.4	4.3	4.2	3.6
30.0								4.3	4.2	4.1	4.0	3.9	3.8	3.7	3.2
32.0									3.8	3.7	3.6	3.5	3.4	3.3	2.6
34.0										3.3	3.2	3.1	3.0	2.9	2.2
36.0											2.8	2.7	2.6	2.5	1.8
38.0											2.5	2.4	2.3	2.1	1.4

Notes :

- Above rated loads are in accordance with the requirements of Clause 9 (Stability) of BS1757:1986 with Wind Forces to Tables 5(a) and 6(a) of BS2573, Part 1:1983.
The machine must be operated on firm level ground. Rated loads are the value at any point 360° around the machine.
- Working radius is horizontal distance from centre of rotation to a vertical line through the centreline of gravity of the load.
- The weight of the hook block and other lifting devices must be considered to be a part of the load.

80 tonne hook block...1100kg	50 tonne hook block...700kg
30 tonne hook block...600kg	10 tonne hook block...400kg

- Fly jib can be fitted to main boom in the following combinations :

Fly Jib Length (metres)	1.0	10.0	13.0	16.0
Main Boom Length (metres)	13 ~ 52	25 ~ 49	25 ~ 46	25 ~ 46

- When fly jib is fitted the actual loads that can be lifted with the main hook block should be reduced according to the chart below (the weight includes that of the auxiliary hook block).

Fly Jib Length (metres)	1.0	10.0	13.0	16.0
Weight to be deducted(Tonnes)	0.6	1.7	2.1	2.5

- Crawler frame and "A" frame should also be extended before working.
- The actual rated loads for fly jib, when the main hook is installed, must be reduced by the total weight of the main and auxiliary hooks.
- Depending on the number of falls of hoist rope, the rated load is limited as follows:

Single line.....up to 10 tonnes	2-part line.....up to 20.0 tonnes	3-part line.....up to 30.0 tonnes
4-part line.....up to 40.0 tonnes	5-part line.....up to 50.0 tonnes	6-part line.....up to 60.0 tonnes
7-part line.....up to 70.0 tonnes	8-part line.....up to 80.0 tonnes	

- The rated load for lifting with fly jib at a given radius is the same as that for the main boom when lowered to that radius (except for the 1m. auxiliary jib where rated load is 500kg less), but is not to exceed the value in the table below :

Offset Angle	Fly Jib Length (metres)			
	1.0	10.0	13.0	16.0
15°	10.0 tonnes	8.0 tonnes	6.5 tonnes	5.5 tonnes
30°		5.0 tonnes	4.0 tonnes	3.0 tonnes