



G. H. JOHNSON CRANE HIRE LTD.

8 Lydford Road, Meadow Lane Industrial Estate, Alfreton, Derbyshire. DE55 7RQ



(01773) 521414

(01773) 830336

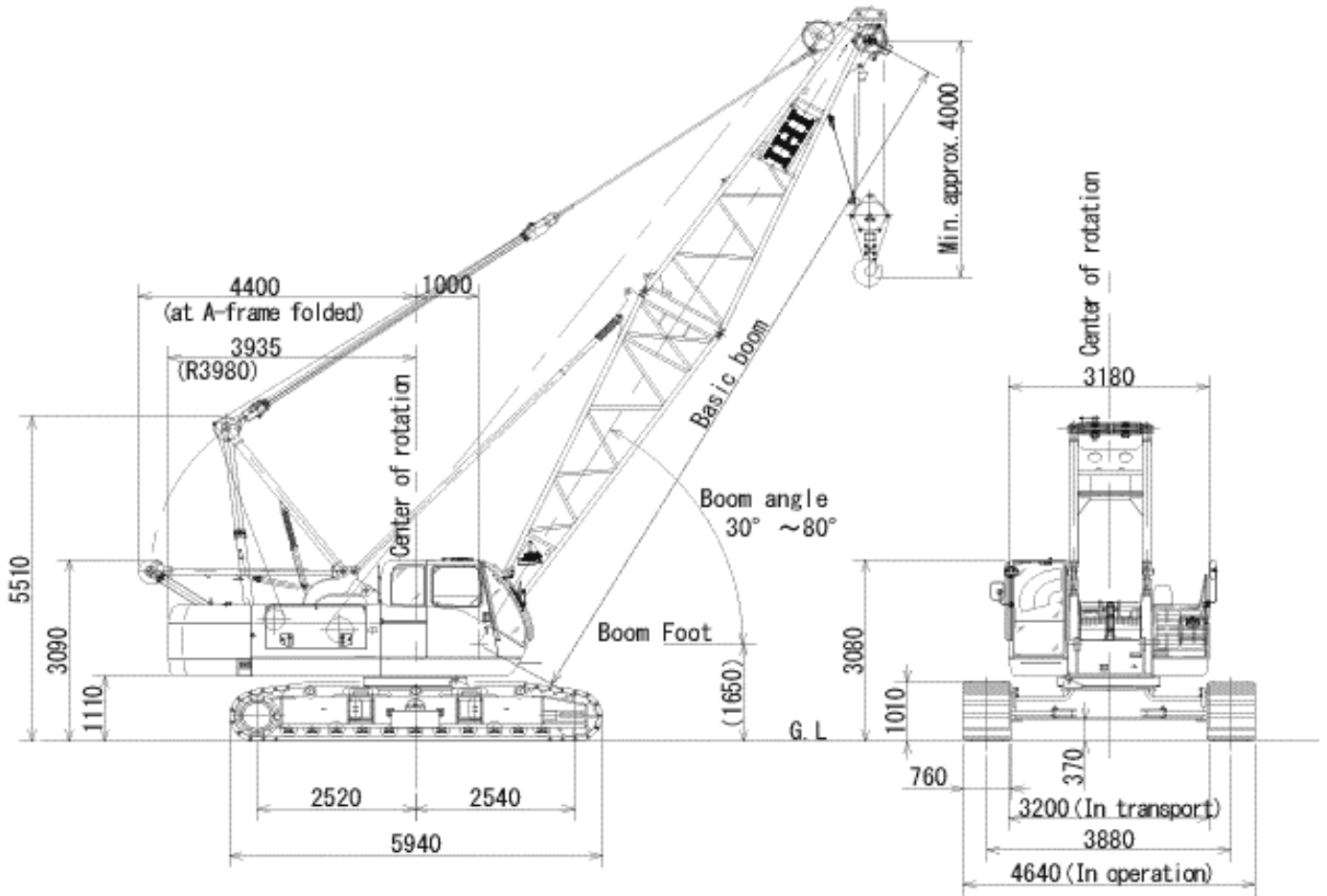
hire@johnsonplant.co.uk



IHI CONSTRUCTION MACHINERY LIMITED



Machine Dimensions (unit : mm)



● Performance

Travel Speed	*2.0~1.3km/h (1.24~0.8MPH)
Swing Speed	3.3 min ⁻¹ (3.3 RPM)
Gradeability	40% (Approx. 22°)

● Engine

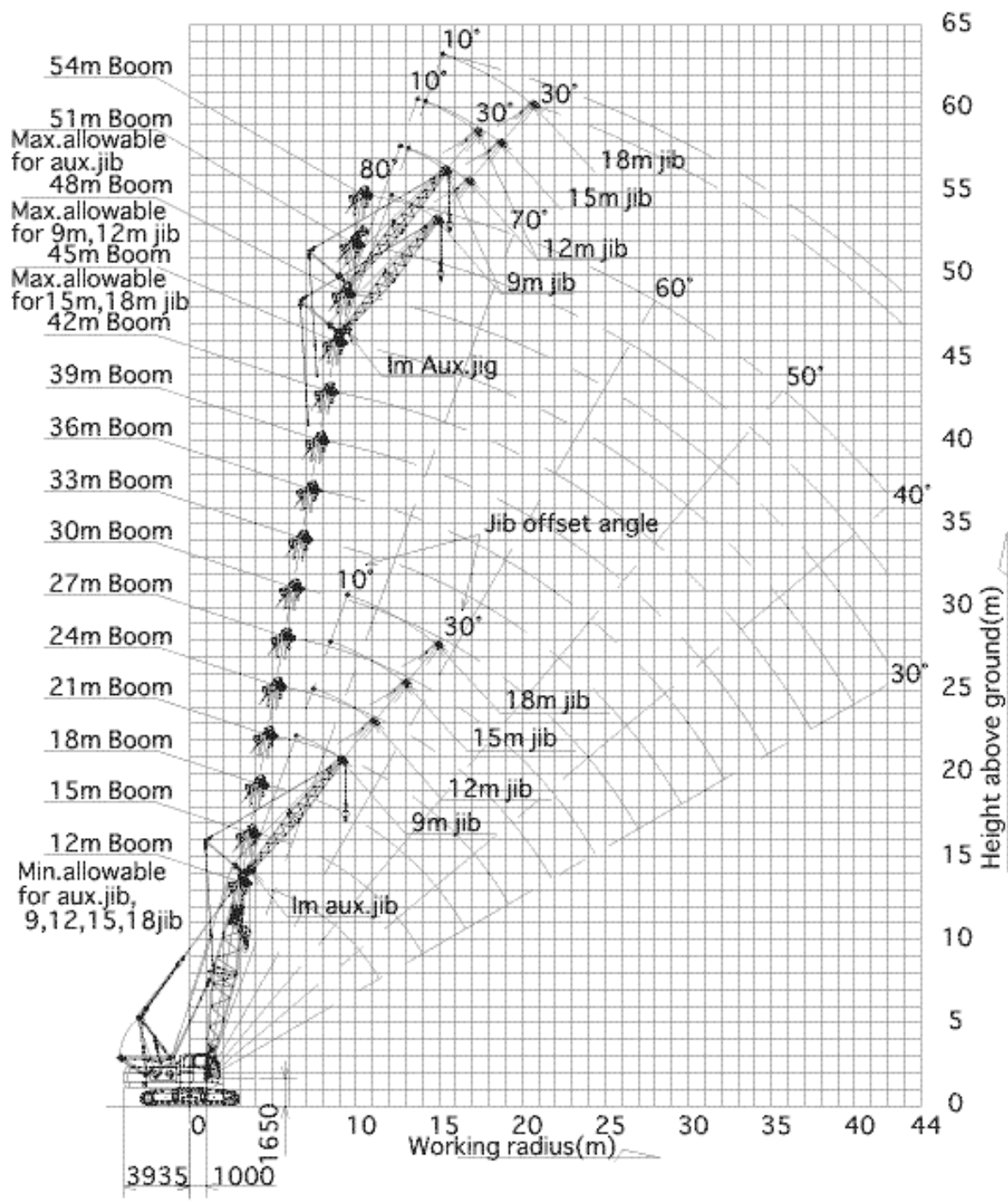
Make	HINO MOTORS LTD.
Model	H07CT
Type	4-cycle, water-cooled, OHV, direct fuel injection.
Rated Output	132.4kW @ 2100 min ⁻¹ (180PS @ 2100 RPM)
Total Piston Displacement	6.728 Litres
Fuel Tank Capacity	240 Litres
Battery	12V×120AH×2pcs.

● Crane Specifications

Max. lifting capacity × working radius		70 Tonnes × 3.8 metres
Max. boom length		54 metres
Max. boom length, with fly jib		63 metres (45m + 18m)
Rope Speed	Main drum hoist/lowering	*110/80~55/40 m/min
	Aux. drum hoist/lowering	*110/80~55/40 m/min
	Boom drum hoist/lowering	*60 m/min
Part Lines	70 Tonne Hook Block	10 Part Line
	6.5 Tonne Hook Block	Single Line
	Boom drum hoist/lowering	14 Part Line
Total operating weight (12 m Boom)		63.3 Tonnes (Approx.)
Counterweight		25.0 Tonnes
Average ground bearing pressure		74.5kPa (0.76kg/cm ²)

*Speed will vary depending on the load.

Working Range Diagram :



Rated Load Chart (Tonnes) :

Working radius (m)	Boom length(m)														
	12.0	15.0	18.0	21.0	24.0	27.0	30.0	33.0	36.0	39.0	42.0	45.0	48.0	51.0	54.0
3.8	70.00														
4.0	66.00	63.10													
4.5	59.10	58.95	58.50												
5.0	52.60	52.50	52.40	52.00											
5.5	45.10	45.00	44.90	44.75	44.65										
6.0	39.40	39.30	39.20	39.10	39.00	38.85	6.7m× 32.50								
7.0	31.15	31.05	30.95	30.85	30.75	30.65	30.55	30.45	7.7m× 26.00						
8.0	25.75	25.65	25.55	25.50	25.40	25.30	25.20	25.10	25.00	8.1m× 24.45					
9.0	21.85	21.75	21.65	21.55	21.45	21.40	21.30	21.20	21.10	21.00	9.4m× 19.50	9.3m× 19.50	9.8m× 18.35		
10.0	18.95	18.85	18.75	18.70	18.60	18.50	18.40	18.35	18.25	18.15	18.10	18.00	17.90	10.9m× 17.10	
12.0	11.5m× 15.80	14.85	14.80	14.70	14.60	14.55	14.45	14.35	14.25	14.20	14.10	14.00	13.95	13.85	12.4m× 13.00
14.0		12.15	12.10	12.00	11.90	11.85	11.75	11.65	11.55	11.50	11.40	11.30	11.25	11.15	11.05
16.0		14.1m× 12.05	10.15	10.10	10.00	9.90	9.80	9.75	9.65	9.55	9.50	9.40	9.30	9.20	9.15
18.0			16.7m× 9.60	8.65	8.60	8.50	8.40	8.30	8.25	8.15	8.05	7.95	7.90	7.80	7.70
20.0				19.3m× 7.90	7.45	7.35	7.30	7.20	7.10	7.00	6.90	6.80	6.75	6.65	6.55
22.0					21.9m× 6.60	6.50	6.40	6.30	6.20	6.10	6.00	5.90	5.85	5.75	5.65
24.0						5.75	5.65	5.55	5.45	5.35	5.25	5.15	5.10	5.00	4.90
26.0						24.5m× 5.60	5.05	4.95	4.85	4.75	4.65	4.55	4.45	4.35	4.25
28.0							27.1m× 4.75	4.40	4.30	4.20	4.10	4.00	3.95	3.85	3.75
30.0								29.7m× 4.05	3.85	3.75	3.65	3.60	3.50	3.40	3.30
32.0									3.50	3.40	3.30	3.20	3.10	3.00	2.90
34.0									32.3m× 3.45	3.00	2.90	2.80	2.70	2.60	2.50
36.0										34.9m× 2.85	2.55	2.45	2.35	2.25	2.15
38.0											37.5m× 2.30	2.15	2.05	1.95	1.85
40.0												40.1m× 1.90	1.80	1.65	1.55
42.0													1.55	1.40	1.30
No. of Part Line	10	10	9	8	8	6	5	5	4	4	3	3	3	3	2

Notes :

- Above rated loads are in accordance with the requirements of Clause 9 (Stability) of BS1757:1986 with Wind Forces to Tables 5(a) and 6(a) of BS2573, Part 1:1983.

The machine must be operated on firm level ground. Rated loads are the value at any point 360° around the machine.

- Working radius is the horizontal distance from the centre of rotation to a vertical line through the centreline of gravity of the load.
- The weight of the hook block and other lifting devices must be considered to be a part of the load.

70 tonne hook block...800kg	35 tonne hook block...500kg	15 tonne hook block...450kg
45 tonne hook block...550kg	25 tonne hook block...500kg	6.5 tonne hook block...250kg

- Fly jib can be fitted to main boom in the following combinations :

Fly Jib Length (metres)	1.0	9.0	12.0	15.0	18.0
Main Boom Length (metres)	12 ~ 51	12 ~ 48	12 ~ 48	12 ~ 45	12 ~ 45

- When fly jib is fitted the actual loads that can be lifted with the main hook block should be reduced according to the chart below (the weight includes that of the auxiliary hook block).

Fly Jib Length(metres)	1.0	9.0	12.0	15.0	18.0
Weight to be deducted(tonnes)	0.40	1.20	1.50	1.80	2.10

- Crawler frame and "A" frame should both be extended before working.
- The actual rated loads for fly jib, when the main hook is installed, must be reduced by the total weight of the main and auxiliary hooks.
- Depending on the number of falls of hoist rope, the rated load is limited as follows:

Single line.....up to 6.5 tonnes	2-part line.....up to 13.0 tonnes	3-part line.....up to 19.5 tonnes
4-part line.....up to 26.0 tonnes	5-part line.....up to 32.5 tonnes	6-part line.....up to 39.0 tonnes
7-part line.....up to 45.5 tonnes	8-part line.....up to 52.0 tonnes	9-part line.....up to 58.5 tonnes
10-part line.....up to 70.0 tonnes		

- Rated loads shown in bold lines are based on structural strength factors.