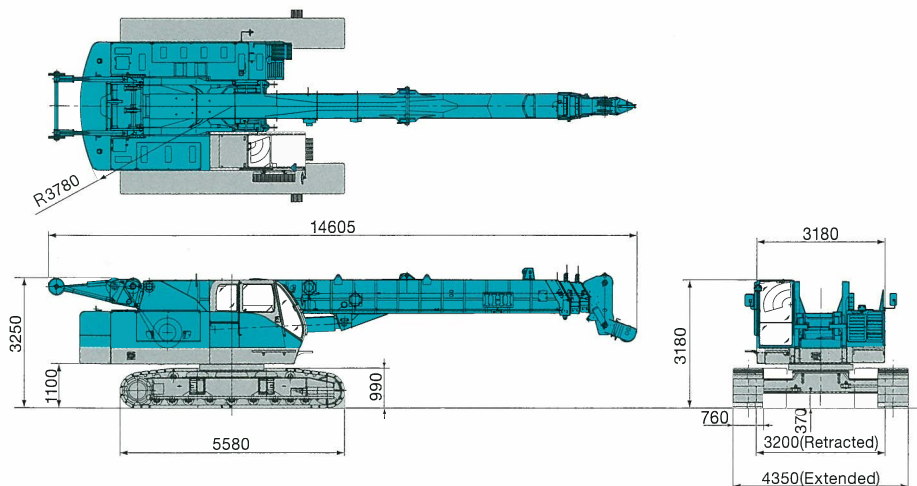


IHI

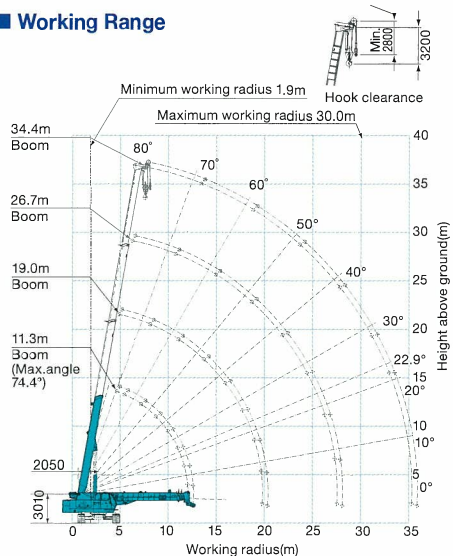


CCH 550 T All-Purpose Telescopic Crane

■ Dimensions(Unit : mm)



■ Working Range



■ Crawlers extended (With 15.7 ton counterweight) Unit : t

Boom length(m)	11.3		19.0		26.7		34.4	
Working radius(m)	Load	Boom angle	Load	Boom angle	Load	Boom angle	Load	Boom angle
1.9	55.00	74.4						
2.2	55.00	72.5	30.00	79.9				
3.0	55.00	68.4	30.00	77.5				
3.5	50.00	65.5	30.00	75.9	3.55m x 22.00	79.9		
4.0	46.40	62.6	30.00	74.3	22.00	79.0		
4.5	42.00	59.5	30.00	72.7	22.00	77.9		
5.0	36.35	56.4	30.00	71.1	22.00	76.7	4.9m x 12.00	79.9
5.5	30.85	53.1	30.00	69.5	5.9m x 22.00	74.7	12.00	78.9
6.0	26.65	49.6	26.60	67.8	21.70	74.5	12.00	78.1
6.5	23.35	45.9	23.35	66.2	20.35	73.4	12.00	77.2
7.0	20.60	41.9	20.65	64.5	18.95	72.2	12.00	76.3
8.0	15.80	32.4	16.60	61.0	16.15	69.9	8.7m x 12.00	73.4
9.0	11.40	17.8	13.75	57.4	13.75	67.6	11.65	72.9
10.0	9.25m x 10.30	0	11.55	53.6	11.55	65.2	10.45	71.1
12.0			8.50	45.3	8.50	60.3	8.45	67.5
14.0			6.40	35.3	6.40	55.1	6.85	63.8
16.0			4.85	21.3	4.95	49.5	5.55	60.0
18.0			16.95m x 4.10	0	3.70	43.4	4.55	56.0
20.0					2.70	36.4	3.55	51.7
22.0					1.85	27.9	2.70	47.3
24.0					1.15	14.9	2.00	42.4
26.0					24.65m x 0.95	0	1.45	37.0
28.0							0.95	30.8
30.0							0.55	22.9

■ Crawlers extended (No counterweight) [Special specification] Unit : t

Boom length(m)	11.3		19.0	
Working radius(m)	Load	Boom angle	Load	Boom angle
3.0	25.00	68.4	20.00	77.5
3.5	25.00	65.5	20.00	75.9
4.0	21.40	62.6	20.00	74.3
4.5	16.75	59.5	16.65	72.7
5.0	13.60	56.4	13.50	71.1
5.5	11.30	53.1	11.20	69.5
6.0	9.55	49.6	9.45	67.8
6.5	8.20	45.9	8.10	66.2
7.0	7.10	41.9	7.00	64.5
8.0	5.40	32.4	5.35	61.0
9.0	4.20	17.8	4.15	57.4
10.0	9.25m x 3.95	0	3.20	53.6
12.0			10.90m x 2.45	50.0

Notes

- All rated loads are based on the machine being operated on a firm, level, uniformly supporting surface ground, at any point of 360° around the machine within 78% of tipping load and forward stability factor over 1.15.
- Working radius is the horizontal distance from the center of rotation to the vertical line through the center of gravity of the load.
- To determine lifting capacities, the weight of all lifting devices such as hooks must be reduced from the rated loads. When both main hook and auxiliary hook are attached, the weight of both hooks must be reduced.

55 ton hook	0.80 ton
30 ton hook	0.34 ton
15 ton hook	0.30 ton
6 ton hook	0.12 ton

4. Depending on the number of part lines, rated loads are limited as follows.

1 part line	6.0 ton	6 part lines	33.0 ton
2 part lines	12.0 ton	7 part lines	38.5 ton
3 part lines	16.5 ton	8 part lines	44.0 ton
4 part lines	22.0 ton	9 part lines	49.5 ton
5 part lines	27.5 ton	10 part lines	55.0 ton

5. The standard number of part lines for each boom length is as follows.

Boom length (m)	11.3	19.0	26.7	34.4	Top sheave
No. of part lines	10	6	4	4	1

■ Specifications

Main specification	
Slewing speed	2.4min ⁻¹ (2.4rpm)
Travel speed	2.0/1.4 km/h
Gradeability	40% (22°)
Lifting performance	
Max. lifting capacity x working radius	55t x 3.0m
Max. lifting height	33.0m
Rope speed (Main & Aux. drums)	100/70 m/min
Boom length	11.3 - 34.4m
Boom extension speed	125 sec.
Boom angle	-2° - 80°
Boom hoisting speed	60 sec.

Superstructure	
Drive system	Hydraulic
Hydraulic pump	3 axial piston pumps, 3 gear pumps
Counterweight	15.7t
Total operating weight	55.5t
Average ground bearing pressure	71kPa (0.72kgf/cm ²)
Engine	
Make	Hino Motors
Model	J08C-UD
Type	6-cylinder, water-cooled, turbocharged, direct fuel injection type diesel engine
Rated power output	175kw/2,100min ⁻¹
Displacement	7.961 lit.
Hydraulic power system	
Power take off	24.5Mpa (250kgf/cm ²) x 240L/min 15.7Mpa (160kgf/cm ²) x 460L/min [Optional] Max. 29.4Mpa (300kgf/cm ²)

Please carefully read the manual before operating machines, and please use it correctly and safely. Photographs appearing in the catalog were taken for publication and may differ in some cases from actual objects. Specifications are subject to change without notice due to technical improvements or modifications.

IHI IHI Construction Machinery Limited

3174 Showa-machi, Kanazawa-ku, Yokohama, Kanagawa 236-8611 Japan
Phone: +81-3-5714-8844 Fax: +81-3-5714-8840, 8843



Distributed by