

G. H. JOHNSON CRANE HIRE LTD.

8 Lydford Road, Meadow Lane Industrial Estate, Alferton, Derbyshire. DE55 7RQ



(01773) 521414

(01773) 830336

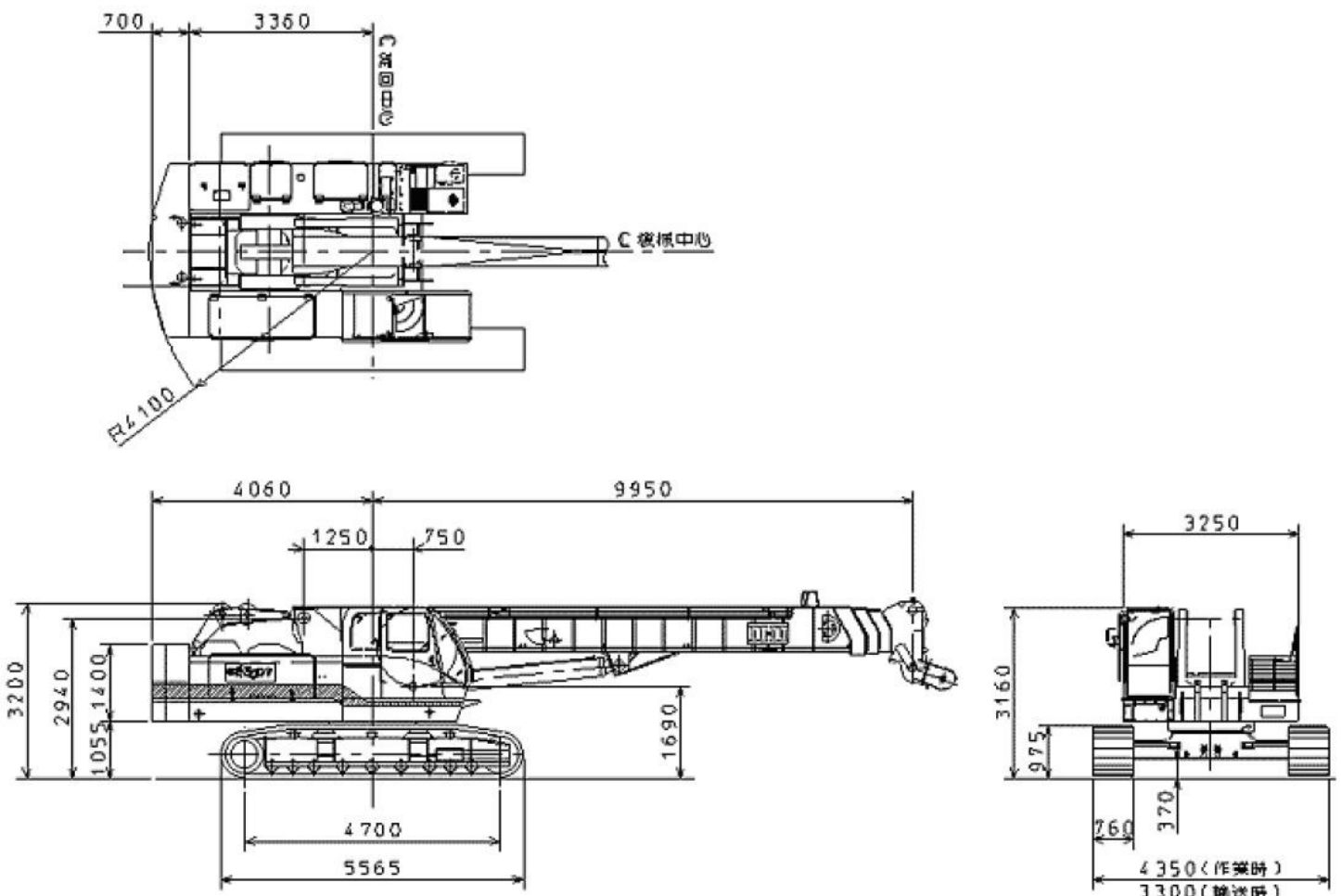
hire@johnsonplant.co.uk



ccH 500T

IHI CONSTRUCTION MACHINERY LIMITED

Machine Dimensions (unit : mm)



● Performance

Travel Speed	*1.5 km/h (1.0 MPH)
Swing Speed	*2.6 min ⁻¹ (3.5 RPM)
Gradeability	40% (Approx. 22°)

● Engine

Make	HINO MOTORS LTD.
Model	EP100T
Type	4-cycle, water-cooled, OHV, direct fuel injection.
Rated Output	158kW @ 2000 min ⁻¹ (215PS @ 2000 RPM)
Total Piston Displacement	8.821 Litres
Fuel Tank Capacity	225 Litres
Battery	12V×120AH×2pcs.

● Crane Specifications

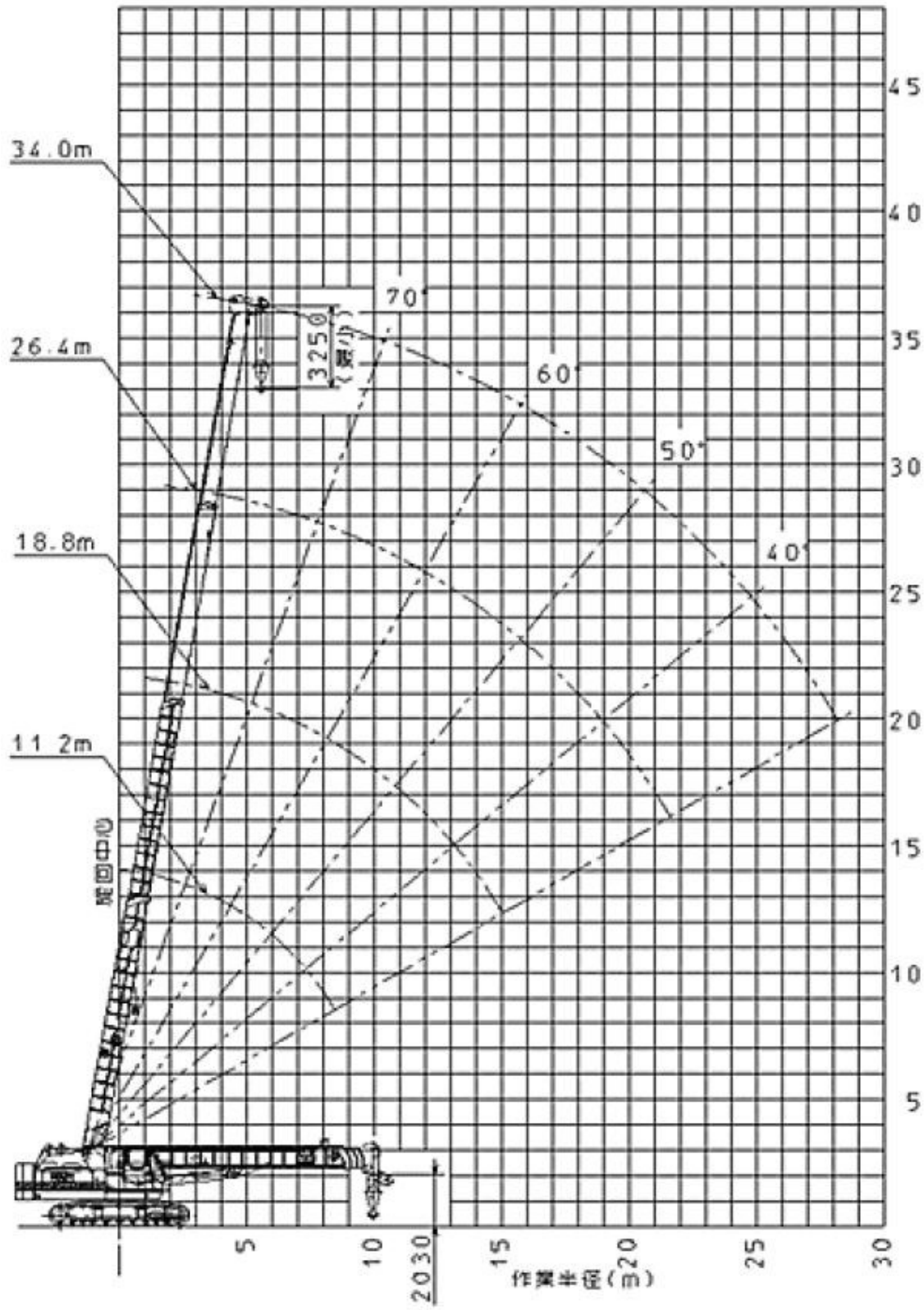
Max. Lifting Capacity × Radius		50 Tonnes × 3.7m
Boom Length (4 Stages)		11.2m ~ 34.0m
Rope Speed	Main Drum Hoist/Lowering	* 80/40 m/min
	Aux. Drum Hoist/Lowering	* 80/40 m/min
	Boom Hoist (-3° ~ 80°)	* 67 Seconds
	Boom Extension (11.2m ~ 34m)	* 125 Seconds
Part Lines	50 Tonne Hook Block	10 Falls
	5 Tonne Hook Block	Single Fall
	Boom Hoist/Lowering	Hydraulic Cylinder
Total operating weight (incl. Hooks)		55.8 Tonnes (Approx.)
Counterweight		14.8 Tonnes
Average ground bearing pressure		65.7kPa (0.67kg/cm ²)

*Speed will vary depending on the load.

www.johnsonplant.co.uk/hire 01773 521414 G.H. JOHNSON CRANE HIRE LTD.

G.H. JOHNSON CRANE HIRE LTD. www.johnsonplant.co.uk/hire 01773 521414

Working Range Diagram :



Rated Load Chart (Tonnes) :

RADIUS (m)	BOOM LENGTH (m)			
	11.2	18.8	26.4	34.0
3.7	50.00	30.00		
4.0	43.50	30.00		
4.5	36.00	30.00	21.00	
5.0	31.50	27.00	21.00	
5.5	28.00	24.00	19.00	
6.0	25.00	21.20	17.60	9.00
7.0	20.00	17.50	15.20	9.00
8.0	16.00	14.50	13.10	9.00
9.0	13.00	12.30	11.40	9.00
10.0	11.20 x 9.95m	10.40	9.90	9.00
11.0		9.00	8.60	8.20
12.0		7.80	7.50	7.30
13.0		6.80	6.60	6.60
14.0		6.00	5.80	6.00
15.0		5.30	5.00	5.30
16.0		4.70	4.30	4.70
17.0		4.10	3.70	4.10
18.0		3.70 x 17.55m	3.20	3.60
19.0			2.70	3.20
20.0			2.30	2.80
22.0			1.60	2.10
24.0			1.00	1.60
26.0			0.70 x 25.15m	1.10
28.0				0.80

Notes :

- Above rated loads are in accordance with the requirements of Clause 9 (Stability) of BS1757:1986 with Wind Forces to Tables 5(a) and 6(a) of BS2573, Part 1:1983.
The machine must be operated on firm level ground. Rated loads are the value at any point 360° around the machine.
- Working radius is the horizontal distance from the centre of rotation to a vertical line through the centreline of gravity of the load.
- The weight of the hook block and other lifting devices must be considered to be a part of the load.

50 tonne hook block...490kg	25 tonne hook block...350kg	5 tonne hook block...120kg
35 tonne hook block...350kg	15 tonne hook block...310kg	

- Crawler frame and "A" frame should both be extended before working.
- Depending on the number of falls of hoist rope, the rated load is limited as follows:

Single line.....up to 5 Tonnes	2-part line.....up to 10 Tonnes	3-part line.....up to 15 Tonnes
4-part line.....up to 20 Tonnes	5-part line.....up to 25 Tonnes	6-part line.....up to 30 Tonnes
7-part line.....up to 35 Tonnes	8-part line.....up to 40 Tonnes	9-part line.....up to 45 Tonnes
10-part line.....up to 50 Tonnes		