

# G. H. JOHNSON CRANE HIRE LTD.

8 Lydford Road, Meadow Lane Industrial Estate, Alfreton, Derbyshire. DE55 7RQ



(01773) 521414

(01773) 830336

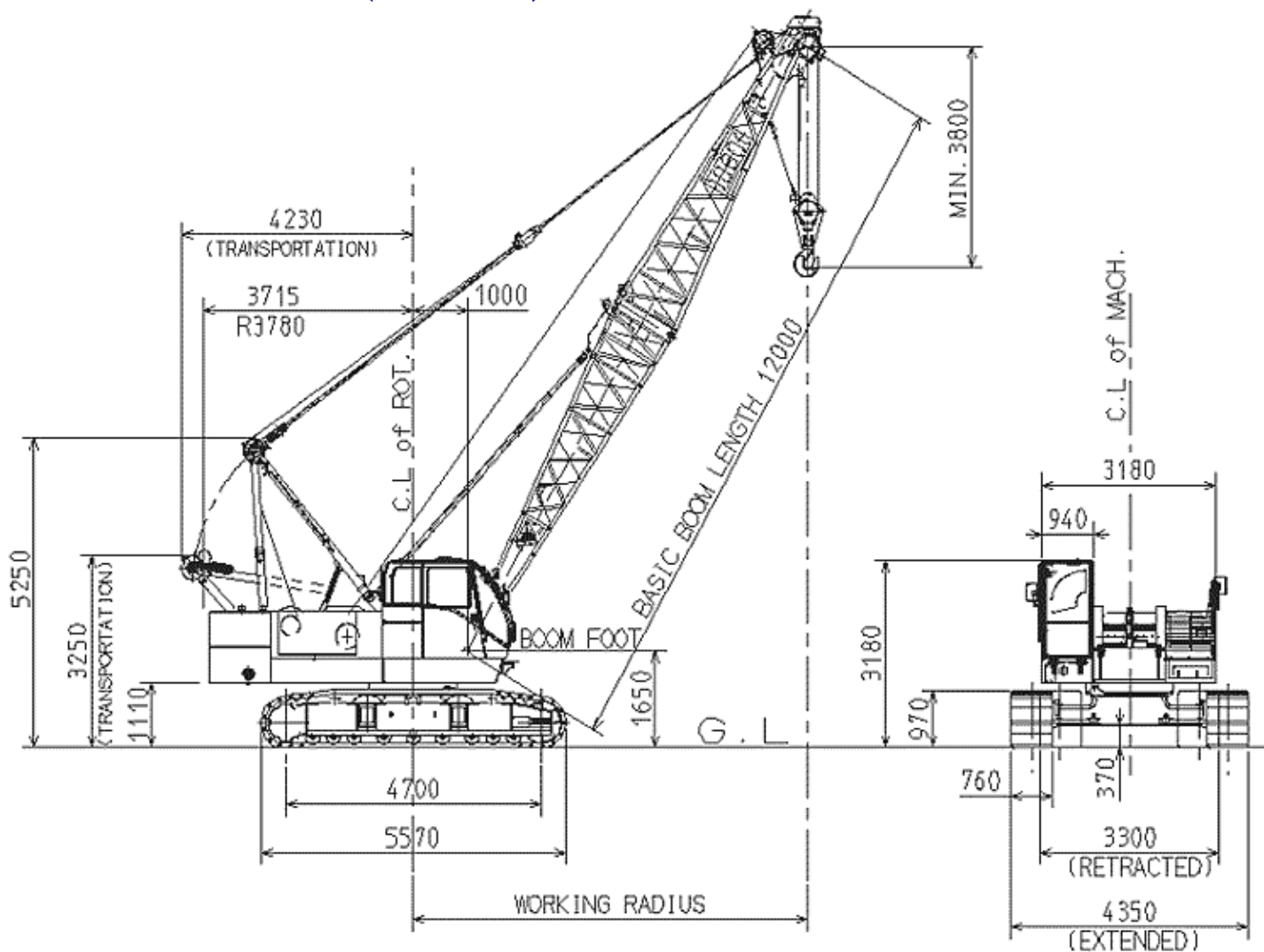
[hire@johnsonplant.co.uk](mailto:hire@johnsonplant.co.uk)



**CCH500-3D**

**IHI CONSTRUCTION MACHINERY LIMITED**

# Machine Dimensions (unit : mm)



## ● Performance

Travel Speed	*1.6 km/h (1.0 MPH)
Swing Speed	*3.5 min <sup>-1</sup> (3.5 RPM)
Gradeability	40% (Approx. 22°)

## ● Engine

Make	HINO MOTORS LTD.
Model	H07CT
Type	4-cycle, water-cooled, OHV, direct fuel injection.
Rated Output	132.4kW @ 2100 min <sup>-1</sup> (180PS @ 2100 RPM)
Total Piston Displacement	6.728 Litres
Fuel Tank Capacity	225 Litres
Battery	12V×120AH×2pcs.

## ● Crane Specifications

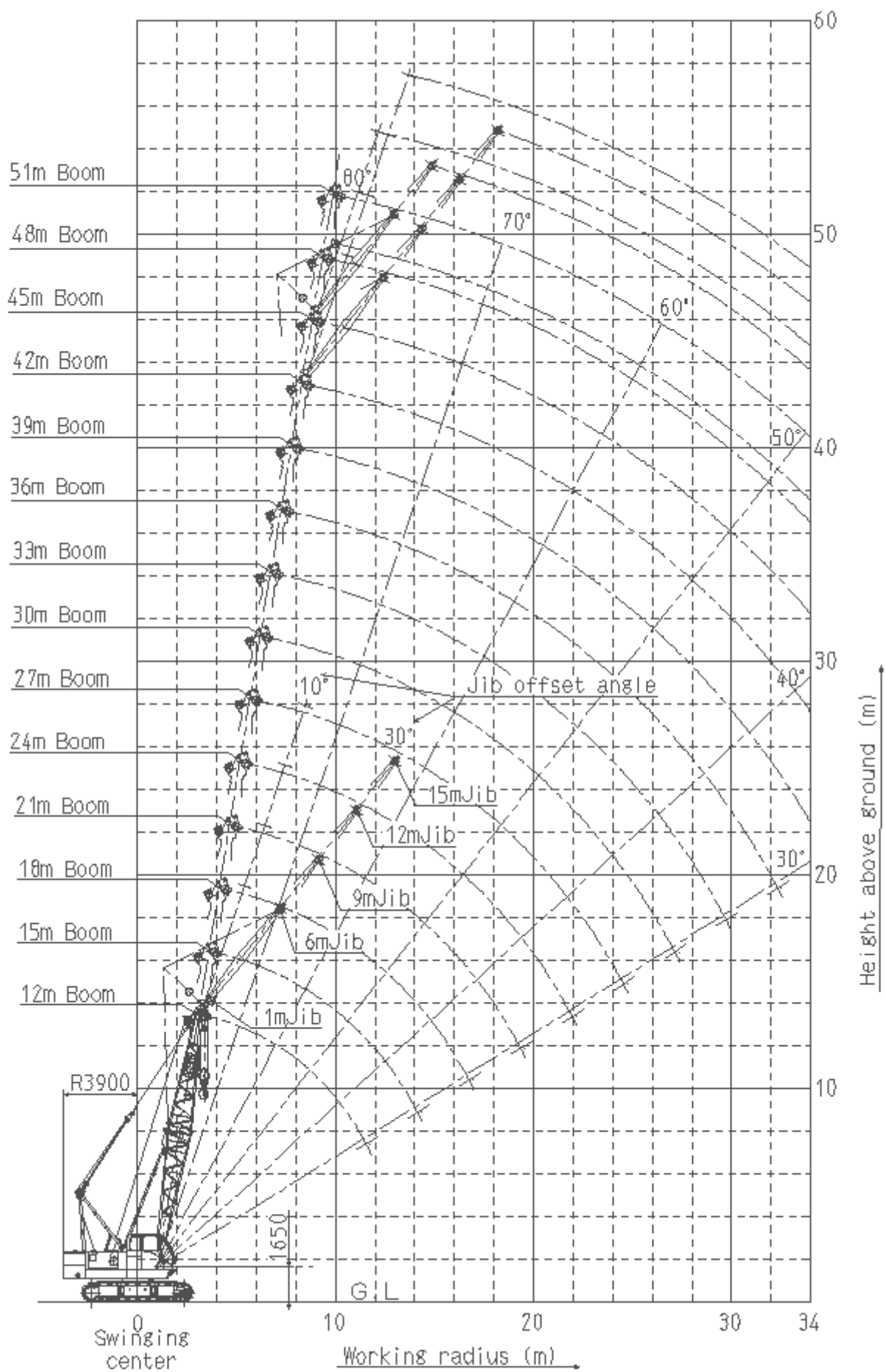
Max. lifting capacity × working radius	50 Tonnes × 3.7 metres
Max. boom length	51 metres
Max. boom length, with fly jib	57 metres (42m +15m)

<b>Rope Speed</b>	Main drum hoist/lowering	*100/70~50/35 m/min
	Aux. drum hoist/lowering	*100/70~50/35 m/min
	Boom drum hoist/lowering	*60 m/min
<b>Part Lines</b>	50 Tonne Hook Block	10 Part Line
	5.8 Tonne Hook Block	Single Line
	Boom drum hoist/lowering	12 Part Line

Total operating weight (12 m Boom)	49.4 Tonnes (Approx.)
Counterweight	16.0 Tonnes
Average ground bearing pressure	62.7kPa (0.64kg/cm <sup>2</sup> )

\*Speed will vary depending on the load.

### Working Range Diagram :



## Rated lifting loads

(Unit:metric ton)

Boom length(m) Working radius(m)	12.00	15.00	18.00	21.00	24.00	27.00	30.00	33.00	36.00	39.00	42.00	45.00	48.00	51.00
3.7	50.00	3.9mx 47.90												
4.0	48.90	47.00	4.4mx 41.60											
4.5	40.30	40.20	40.10											
5.0	33.80	33.70	33.60	33.50	5.5mx 28.70	5.9mx 25.65								
6.0	25.50	25.40	25.30	25.20	25.10	25.00	6.5mx 22.05							
7.0	20.40	20.30	20.20	20.10	20.00	19.90	19.80	19.70	7.6mx 17.00					
8.0	17.00	16.90	16.80	16.70	16.60	16.50	16.40	16.30	16.20	8.1mx 15.80	8.6mx 14.40			
9.0	14.50	14.40	14.30	14.20	14.10	14.00	13.90	13.80	13.70	13.60	13.50	9.1mx 13.15	9.8mx 11.40	
10.0	12.60	12.50	12.40	12.30	12.20	12.10	12.00	11.90	11.80	11.70	11.60	11.50	11.20	10.3m x8.50
12.0	11.5m x10.50	9.90	9.80	9.70	9.60	9.50	9.40	9.30	9.20	9.10	9.00	8.90	8.80	8.50
14.0		8.10	8.00	7.90	7.80	7.70	7.60	7.50	7.40	7.30	7.20	7.10	7.00	6.90
16.0		14.1m x8.00	6.70	6.60	6.50	6.40	6.30	6.20	6.10	6.00	5.90	5.80	5.70	5.60
18.0			16.7m x6.35	5.70	5.60	5.50	5.40	5.30	5.20	5.10	5.00	4.90	4.80	4.70
20.0				19.3m x5.20	4.90	4.80	4.70	4.60	4.50	4.40	4.30	4.20	4.10	4.00
22.0					21.9m x4.30	4.20	4.10	4.00	3.90	3.80	3.70	3.60	3.50	3.40
24.0						3.70	3.60	3.50	3.40	3.30	3.20	3.10	3.00	2.90
26.0						24.5m x3.50	3.10	3.00	2.95	2.85	2.75	2.65	2.55	2.45
28.0							27.0m x2.90	2.70	2.60	2.50	2.40	2.30	2.20	2.10
30.0								29.7m x2.30	2.30	2.20	2.10	2.00	1.90	1.80
32.0									2.00	1.90	1.80	1.70	1.60	1.50
34.0									32.3m x1.95	1.60	1.50	1.40	1.35	1.25
No.of Part Line	10	10	9	7	6	6	5	4	4	3	3	3	2	2

### Notes

- Above rated loads are based on firm level ground, within 78% of tipping load at any point 360° throughout and with front stability of 1.15 or more.
- Working radius is horizontal distance from center of rotation to a vertical line through the centerline of gravity of the load.
- The weight of the hook block and other lifting devices must be considered to be a part of the load.  
 50 ton hook block.....0.49ton  
 25 ton hook block.....0.35ton  
 15 ton hook block.....0.31ton
- Crawler frame and A frame (high gantry) should also be extended before working.
- When jib boom is fitted actual loads that can be lifted with the main hook block should reduce following weights from the above chart (the weights include that of the auxiliary hook block).

Jib boom length(m)	1.00	6.00	9.00	12.00	15.00
Weight to be deducted(ton)	0.30	0.75	0.95	1.20	1.45

- Depending on the number of part lines, rated lifting load is limited as follows,  
 1-part line.....up to 5.8 tons  
 2-part line.....up to 11.4 tons  
 3-part line.....up to 16.0 tons  
 4-part line.....up to 20.0 tons  
 5-part line.....up to 25.0 tons  
 6-part line.....up to 30.0 tons  
 7-part line.....up to 35.0 tons  
 8-part line.....up to 40.0 tons  
 9-part line.....up to 45.0 tons  
 10-part line.....up to 50.0 tons
- The hook block will not come down to ground level, if the rope part line is more than shown in above chart.



