



G. H. JOHNSON CRANE HIRE LTD.

8 Lydford Road, Meadow Lane Industrial Estate, Alfreton, Derbyshire. DE55 7RQ



(01773) 521414

(01773) 830336

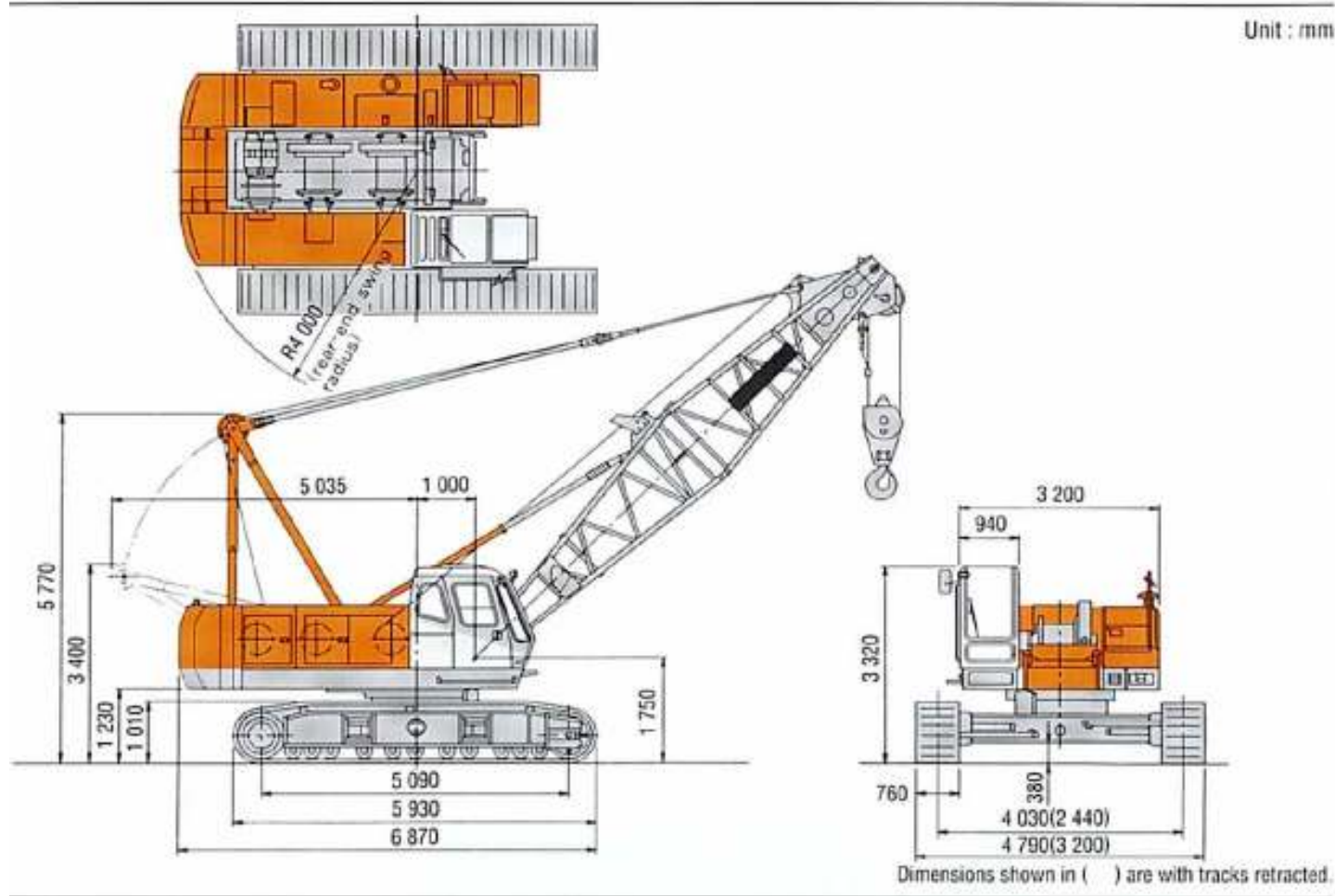
hire@johnsonplant.co.uk



HITACHI

CX700
HYDRAULIC CRAWLER CRANE

Machine Dimensions (unit : mm)



● Performance

Travel Speed	*0.9~1.3km/h (0.56~0.8MPH)
Swing Speed	3.0 min ⁻¹ (3.0 RPM)
Gradeability	40% (Approx. 22°)

● Engine

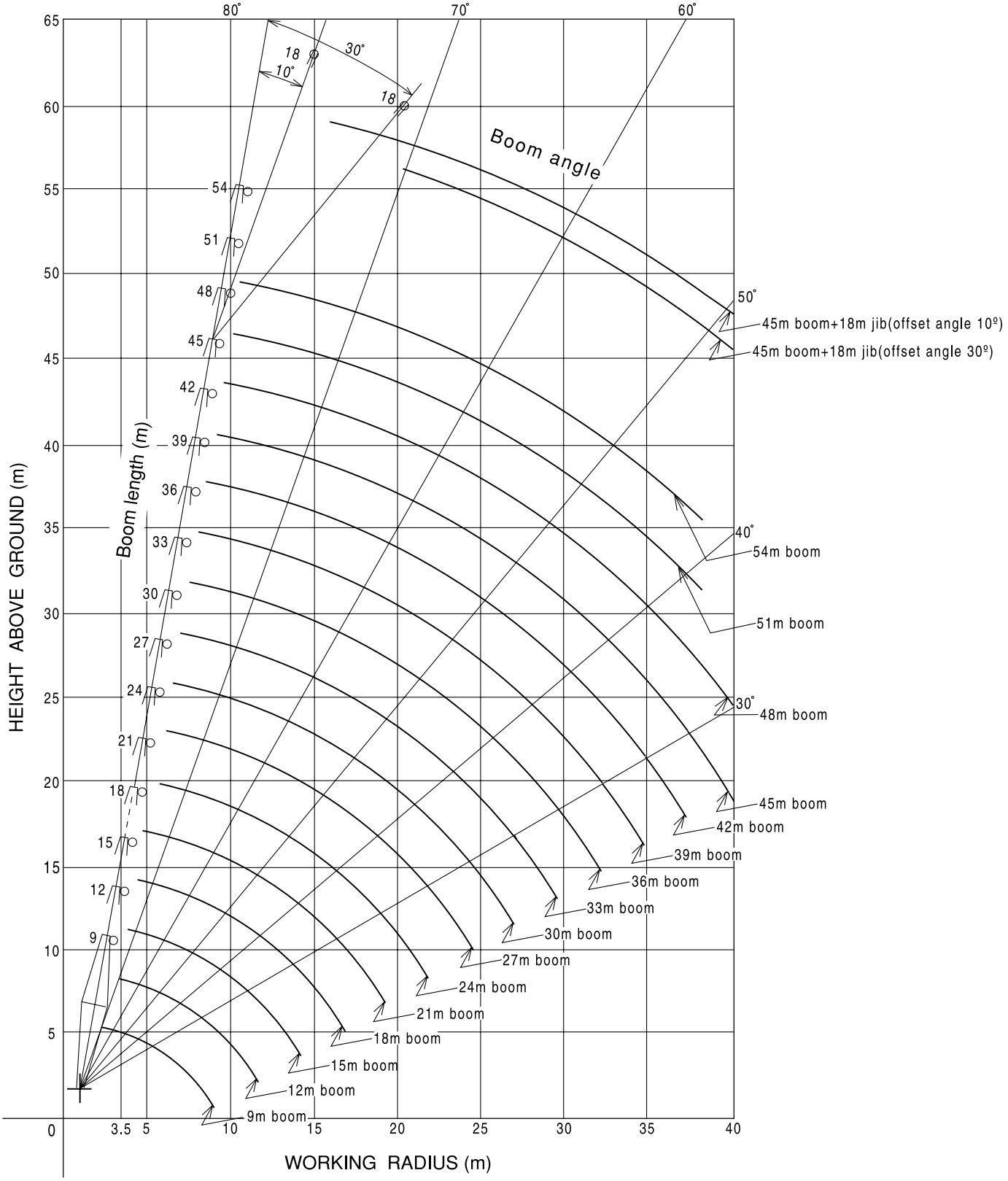
Make	HINO MOTORS LTD.
Model	H07CT
Type	4-cycle, water-cooled, OHV, direct fuel injection.
Rated Output	132.4kW @ 2000 min ⁻¹ (180PS @ 2000 RPM)
Total Piston Displacement	6.728 Litres
Fuel Tank Capacity	300 Litres
Battery	12V×120AH×2pcs.

● Crane Specifications

Max. lifting capacity × working radius	70 Tonnes × 3.7 metres	
Max. boom length	54 metres	
Max. boom length, with fly jib	63 metres (45m +18m)	
Rope Speed	Main drum hoist/lowering	*100/65/32 m/min
	Aux. drum hoist/lowering	*100/65/32 m/min
	Boom drum hoist/lowering	*53 m/min
Part Lines	70 Tonne Hook Block	10 Part Line
	6.5 Tonne Hook Block	Single Line
	Boom drum hoist/lowering	12 Part Line
Total operating weight (9 m Boom)	64.9 Tonnes (Approx.)	
Counterweight	23.8 Tonnes	
Average ground bearing pressure	77.6kPa (0.79kg/cm ²)	

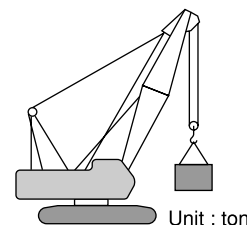
*Speed will vary depending on the load.

Working Ranges



Correlation between the number of falls, maximum rated loads, hook weights are shown in the table below.

Hook Capacity (ton)	Hook Weight (ton)	Maximum Rated Loads (ton)									
		10	9	8	7	6	5	4	3	2	1
70.0	0.80	70.0	58.5	52.0	45.5	39.0	32.5	26.0	19.5	13.0	-
40.0	0.41	-	-	-	40.0	39.0	32.5	26.0	19.5	13.0	-
15.0	0.36	-	-	-	-	-	-	-	15.0	13.0	-
6.5	0.18	-	-	-	-	-	-	-	-	-	6.5

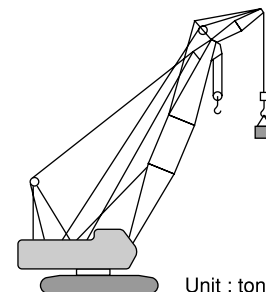


Rated Loads for Main Boom (BS Rating)

Working Radius (m)	Boom Length (m)							
	9	12	15	18	21	24	27	30
3.5	70.00	3.6m×70.00t						
4.0	65.00	65.00	4.2m×61.85t					
4.5	58.30	58.15	57.95	4.7m×55.45t				
5.0	52.10	51.95	51.85	51.80	5.3m×47.05t			
5.5	44.80	44.70	44.55	44.45	44.35	5.8m×40.80t		
6.0	39.30	39.15	39.00	38.90	38.80	38.75	6.4m×35.15t	6.9m×31.35t
7.0	31.45	31.30	31.15	31.05	30.95	30.85	30.80	30.70
8.0	25.05	25.95	25.80	25.70	25.60	25.50	25.45	25.35
9.0	19.30	22.15	21.95	21.90	21.75	21.65	21.60	21.50
10.0		19.30	19.10	19.00	18.85	18.75	18.70	18.60
12.0		11.6m×15.20t	15.05	14.95	14.75	14.65	14.60	14.50
14.0			12.35	12.20	12.05	11.95	11.85	11.75
16.0			14.2m×12.15t	10.30	10.10	10.00	9.80	9.75
18.0				16.8m×9.65t	8.60	8.50	8.30	8.25
20.0					19.4m×7.80t	7.30	7.15	7.10
22.0						6.40	6.20	6.15
24.0							5.45	5.40
26.0							24.6m×5.25t	4.75
28.0								27.2m×4.45t

Working Radius (m)	Boom Length (m)							
	33	36	39	42	45	48	51	54
7.0	7.5m×27.70t							
8.0	25.25	25.20	8.6m×22.60t					
9.0	21.40	21.35	21.20	9.1m×19.50t	9.7m×18.90t			
10.0	18.45	18.40	18.30	18.20	18.10	10.2m×16.50t	10.7m×14.10t	11.3m×11.75t
12.0	14.35	14.30	14.20	14.10	14.00	13.90	13.55	11.50
14.0	11.60	11.50	11.40	11.30	11.15	11.05	10.90	10.80
16.0	9.60	9.50	9.40	9.30	9.15	9.05	8.85	8.80
18.0	8.05	8.00	7.85	7.75	7.60	7.50	7.35	7.25
20.0	6.90	6.80	6.70	6.55	6.45	6.30	6.15	6.10
22.0	5.95	5.85	5.75	5.60	5.50	5.35	5.20	5.10
24.0	5.20	5.10	4.95	4.85	4.70	4.60	4.40	4.35
26.0	4.55	4.45	4.30	4.20	4.05	3.95	3.75	3.70
28.0	4.05	3.90	3.80	3.65	3.50	3.40	3.20	3.15
30.0	29.8m×3.60t	3.45	3.35	3.20	3.05	2.90	2.75	2.65
32.0		3.05	2.95	2.80	2.65	2.50	2.35	2.25
34.0		32.4m×3.00t	2.60	2.45	2.30	2.15	2.00	1.90
36.0			35.0m×2.45t	2.15	2.00	1.85	1.65	1.60
38.0				37.6m×1.90t	1.70	1.60	1.40	37.3m×1.40t
40.0					1.45	39.5m×1.40t		

- Notes:
1. The rated loads are determined according to BS rating(British Standard;1986) on the condition that the machine is stationed on firm, level ground.
 2. To calculate the maximum load that can actually be lifted, deduct weight of all lifting accessories, such as main and aux. hooks, from figures shown above.
 3. Working radius is the horizontal distance from the swing center to the center of gravity of a lifted load.
 4. The counterweight is 23.8 ton.
 5. Be sure to fully extend the side frames before operating the machine.
 6. Rated line pull is 6 500 kgf when 22mm dia. wire rope is used.
 7. Figures described as ○○m×○○t in the tables indicate working radius (m) × rated load (ton).



Unit : ton

Rated Loads for Jib Boom (BS Rating) (1)

Main Boom Length (m)	27					
Jib Boom Length (m)	9		13.5		18	
Offset Angle (°)	10	30	10	30	10	30
Working Radius (m)	10	30	10	30	10	30
9.4	6.50					
10.0	6.50		11.0m×6.50t			
12.0	6.50	12.1m×6.50t	6.50		12.6m×5.90t	
14.0	6.50	6.50	6.50	15.0m×6.50t	5.70	
16.0	6.50	6.50	6.50	6.50	5.40	17.9m×4.30t
18.0	6.50	6.50	6.50	6.25	5.15	4.30
20.0	6.50	6.50	6.50	5.85	4.95	4.15
22.0	6.35	6.50	6.50	5.55	4.75	4.05
24.0	5.55	5.75	5.75	5.25	4.55	3.95
26.0	4.90	5.05	5.05	5.00	4.40	3.85
28.0	4.35	4.45	4.50	4.70	4.25	3.65
30.0	3.85	3.95	4.00	4.20	4.10	3.50
32.0	3.45	3.50	3.60	3.75	3.70	3.35
34.0	33.3m×3.20t	33.8m×3.15t	3.25	3.35	3.30	3.20
36.0			2.90	3.00	3.00	3.10
38.0			37.5m×2.70t	2.65	2.70	2.85
40.0				38.3m×2.65t	2.45	2.55
42.0					41.7m×2.25t	2.30
44.0						42.8m×2.20t

Unit : ton

Main Boom Length (m)	30					
Jib Boom Length (m)	9		13.5		18	
Offset Angle (°)	10	30	10	30	10	30
Working Radius (m)	10	30	10	30	10	30
10.0	6.50		11.5m×6.50t			
12.0	6.50	12.7m×6.50t	6.50		13.1m×5.90t	
14.0	6.50	6.50	6.50	15.6m×6.50t	5.80	
16.0	6.50	6.50	6.50	6.50	5.50	
18.0	6.50	6.50	6.50	6.35	5.25	18.5m×4.30t
20.0	6.50	6.50	6.50	6.00	5.05	4.20
22.0	6.25	6.50	6.45	5.70	4.85	4.10
24.0	5.45	5.65	5.65	5.40	4.65	4.00
26.0	4.80	4.95	4.95	5.15	4.50	3.90
28.0	4.25	4.35	4.40	4.65	4.35	3.75
30.0	3.75	3.85	3.90	4.10	4.00	3.60
32.0	3.35	3.40	3.50	3.65	3.60	3.45
34.0	3.00	3.05	3.10	3.25	3.20	3.30
36.0	35.9m×2.70t	2.70	2.80	2.90	2.90	3.05
38.0		36.4m×2.65t	2.50	2.60	2.60	2.75
40.0			2.25	2.30	2.35	2.45
42.0			40.1m×2.25t	40.9m×2.20t	2.10	2.20
44.0					1.90	1.95
45.4					44.3m×1.85t	1.80

- Notes:
1. The rated loads are determined according to BS rating(British Standard;1986) on the condition that the machine is stationed on firm, level ground.
 2. To calculate the maximum load that can actually be lifted, deduct weight of all lifting accessories, such as main and aux. hooks.
 3. Working radius is the horizontal distance from the swing center to the center of gravity of a lifted load.
 4. The offset angles shown are of jib boom offset angle against the main boom, under load.
 5. The counterweight is 23.8 ton.
 6. Be sure to fully extend the side frames before operating the machine.
 7. Figures described as ○○m×○○t in the tables indicate working radius (m) × rated load (ton).

Rated Loads for Jib Boom (BS Rating) (2)

Unit : ton

Main Boom Length (m)	33					
Jib Boom Length (m)	9		13.5		18	
Offset Angle (°)	10	30	10	30	10	30
Working Radius (m)	10	30	10	30	10	30
10.5	6.50					
12.0	6.50	13.2m×6.50t	12.1m×6.50t		13.7m×5.90t	
14.0	6.50	6.50	6.50		5.85	
16.0	6.50	6.50	6.50	16.1m×6.50t	5.60	
18.0	6.50	6.50	6.50	6.50	5.35	19.0m×4.30t
20.0	6.50	6.50	6.50	6.15	5.15	4.20
22.0	6.10	6.35	6.30	5.85	4.95	4.10
24.0	5.25	5.50	5.45	5.55	4.75	4.00
26.0	4.60	4.80	4.80	5.10	4.60	3.95
28.0	4.05	4.20	4.20	4.50	4.35	3.85
30.0	3.55	3.70	3.70	3.95	3.85	3.70
32.0	3.15	3.25	3.30	3.50	3.40	3.55
34.0	2.80	2.85	2.90	3.10	3.05	3.30
36.0	2.45	2.50	2.60	2.75	2.70	2.95
38.0	2.20	2.20	2.30	2.45	2.40	2.60
40.0	38.5m×2.10t	39.0m×2.10t	2.05	2.15	2.15	2.30
42.0			1.85	1.90	1.90	2.05
44.0			42.7m×1.75t	43.5m×1.70t	1.70	1.80
46.0					1.55	1.60
48.0					46.9m×1.45t	1.40

Unit : ton

Main Boom Length (m)	36					
Jib Boom Length (m)	9		13.5		18	
Offset Angle (°)	10	30	10	30	10	30
Working Radius (m)	10	30	10	30	10	30
10.5	11.0m×6.50t					
12.0	6.50	13.7m×6.50t	12.6m×6.50t			
14.0	6.50	6.50	6.50		14.2m×5.90t	
16.0	6.50	6.50	6.50	16.7m×6.50t	5.65	
18.0	6.50	6.50	6.50	6.50	5.45	19.6m×4.25t
20.0	6.50	6.50	6.50	6.25	5.20	4.25
22.0	5.95	6.25	6.15	5.95	5.05	4.15
24.0	5.15	5.40	5.35	5.70	4.85	4.05
26.0	4.50	4.70	4.65	5.00	4.70	3.95
28.0	3.90	4.10	4.10	4.40	4.20	3.90
30.0	3.45	3.60	3.60	3.85	3.70	3.75
32.0	3.00	3.15	3.15	3.40	3.30	3.60
34.0	2.65	2.75	2.80	3.00	2.90	3.20
36.0	2.30	2.40	2.45	2.65	2.60	2.85
38.0	2.05	2.10	2.20	2.30	2.30	2.50
40.0	1.80	1.85	1.90	2.05	2.00	2.20
42.0	41.1m×1.65t	41.6m×1.65t	1.70	1.80	1.80	1.95
44.0			1.50	1.55	1.60	1.70
46.0			45.3m×1.35t	1.35	1.40	1.50
48.0				46.1m×1.35t	46.9m×1.30t	1.30

- Notes:
- The rated loads are determined according to BS rating(British Standard;1986) on the condition that the machine is stationed on firm, level ground.
 - To calculate the maximum load that can actually be lifted, deduct weight of all lifting accessories, such as main and aux. hooks.
 - Working radius is the horizontal distance from the swing center to the center of gravity of a lifted load.
 - The offset angles shown are of jib boom offset angle against the main boom, under load.
 - The counterweight is 23.8 ton.
 - Be sure to fully extend the side frames before operating the machine.
 - Figures described as ○○m×○○t in the tables indicate working radius (m) × rated load (ton).

Rated Loads for Jib Boom (BS Rating) (3)

Unit : ton

Main Boom Length (m)	39					
Jib Boom Length (m)	9		13.5		18	
Offset Angle (°)	10	30	10	30	10	30
Working Radius (m)	10	30	10	30	10	30
11.6	6.50					
12.0	6.50		13.2m×6.50t			
14.0	6.50	14.3m×6.50t	6.50		14.7m×5.90t	
16.0	6.50	6.50	6.50	17.2m×6.50t	5.75	
18.0	6.50	6.50	6.50	6.50	5.50	
20.0	6.50	6.50	6.50	6.40	5.30	20.1m×4.25t
22.0	5.85	6.15	6.05	6.10	5.10	4.15
24.0	5.05	5.30	5.20	5.65	4.95	4.05
26.0	4.35	4.60	4.55	4.90	4.70	4.00
28.0	3.80	4.00	3.95	4.30	4.10	3.90
30.0	3.30	3.45	3.45	3.75	3.60	3.85
32.0	2.85	3.00	3.05	3.30	3.15	3.50
34.0	2.50	2.60	2.65	2.90	2.80	3.10
36.0	2.20	2.30	2.35	2.55	2.45	2.75
38.0	1.90	2.00	2.05	2.20	2.15	2.40
40.0	1.65	1.70	1.80	1.95	1.90	2.10
42.0	1.45	1.50	1.55	1.65	1.65	1.85
44.0	43.5m×1.30t	43.9m×1.30t	1.35	1.45	1.45	1.60
46.0			44.5m×1.30t	45.5m×1.30t	45.5m×1.30t	1.40
46.9						1.30

Unit : ton

Main Boom Length (m)	42					
Jib Boom Length (m)	9		13.5		18	
Offset Angle (°)	10	30	10	30	10	30
Working Radius (m)	10	30	10	30	10	30
12.0	12.1m×6.50t		13.7m×6.50t			
14.0	6.50	14.8m×6.50t	6.50		15.3m×5.90t	
16.0	6.50	6.50	6.50	17.8m×6.50t	5.80	
18.0	6.50	6.50	6.50	6.50	5.60	
20.0	6.50	6.50	6.50	6.50	5.35	20.7m×4.25t
22.0	5.70	6.05	5.90	6.20	5.20	4.20
24.0	4.90	5.20	5.10	5.55	5.00	4.10
26.0	4.20	4.50	4.40	4.80	4.55	4.00
28.0	3.65	3.85	3.85	4.20	3.95	3.95
30.0	3.15	3.35	3.35	3.65	3.45	3.85
32.0	2.75	2.90	2.90	3.20	3.05	3.40
34.0	2.35	2.50	2.50	2.75	2.65	3.00
36.0	2.05	2.15	2.20	2.40	2.30	2.65
38.0	1.75	1.85	1.90	2.10	2.00	2.30
40.0	1.50	1.60	1.65	1.80	1.75	2.00
42.0	41.6m×1.30t	1.35	1.40	1.55	1.50	1.75
44.0		42.4m×1.30t	42.7m×1.30t	1.30	1.30	1.50
46.0						1.30

- Notes: 1. The rated loads are determined according to BS rating(British Standard;1986) on the condition that the machine is stationed on firm, level ground.
2. To calculate the maximum load that can actually be lifted, deduct weight of all lifting accessories, such as main and aux. hooks.
3. Working radius is the horizontal distance from the swing center to the center of gravity of a lifted load.
4. The offset angles shown are of jib boom offset angle against the main boom, under load.
5. The counterweight is 23.8 ton.
6. Be sure to fully extend the side frames before operating the machine.
7. Figures described as ○○m×○○t in the tables indicate working radius (m) × rated load (ton).

Rated Loads for Jib Boom (BS Rating) (4)

Unit : ton

Main Boom Length (m)	45			
Jib Boom Length (m)	9		13.5	
Offset Angle (°)	10	30	10	30
Working Radius (m)	10	30	10	30
12.7	6.50			
14.0	6.50	15.4m×6.50t	14.3m×6.50t	
16.0	6.50	6.50	6.50	
18.0	6.50	6.50	6.50	18.3m×6.50t
20.0	6.50	6.50	6.50	6.50
22.0	5.55	5.95	5.80	6.30
24.0	4.75	5.05	4.95	5.45
26.0	4.05	4.35	4.25	4.70
28.0	3.50	3.75	3.70	4.05
30.0	3.00	3.20	3.20	3.55
32.0	2.60	2.75	2.75	3.05
34.0	2.20	2.35	2.35	2.65
36.0	1.90	2.05	2.05	2.30
38.0	1.60	1.70	1.75	1.95
40.0	1.35	1.45	1.50	1.70
42.0	40.4m×1.30t	41.2m×1.30t	41.6m×1.30t	1.40
42.6				1.30

- Notes:
1. The rated loads are determined according to BS rating(British Standard;1986) on the condition that the machine is stationed on firm, level ground.
 2. To calculate the maximum load that can actually be lifted, deduct weight of all lifting accessories, such as main and aux. hooks.
 3. Working radius is the horizontal distance from the swing center to the center of gravity of a lifted load.
 4. The offset angles shown are of jib boom offset angle against the main boom, under load.
 5. The counterweight is 23.8 ton.
 6. Be sure to fully extend the side frames before operating the machine.
 7. Figures described as ○○m×○○t in the tables indicate working radius (m) × rated load (ton).